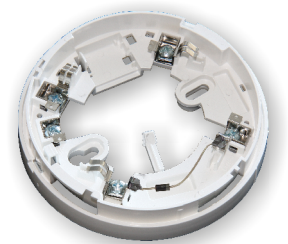


## SensoMAG B24D Standard Base with Schottky Diode

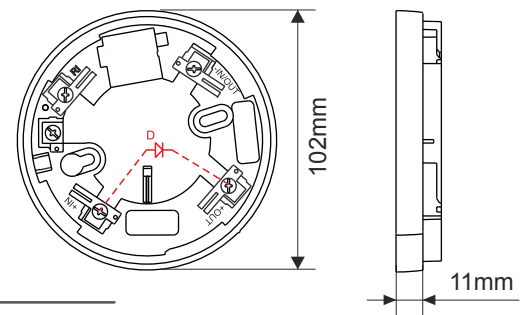
### Description

SensoMAG B24D is a standard base with Schottky diode for detection for removed detector from its base. The base is designed for conventional detectors SensoMAG series: F10, F10B, R20, S30 and M40. The base is with low profile design and reliable contact system. It is possible to lock the detector to the base for extra security.

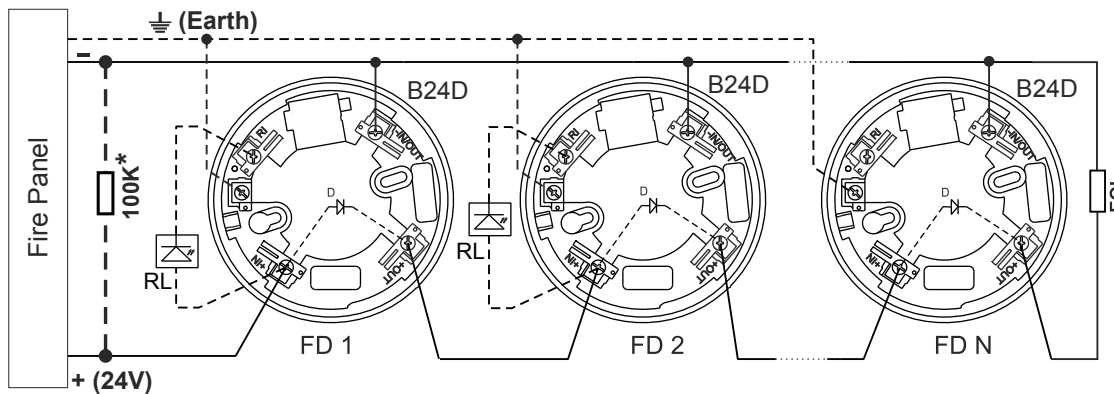


### Technical and Environmental Specifications

Wire Gauge for terminals . . . . . 3.0mm<sup>2</sup>  
 Operating temperature . . . . . -10°C to +60°C  
 Relative humidity resistance . . . . . (93 ± 3)% @ 40°C  
 Weight . . . . . ~42g  
 Dimensions . . . . . 102x11mm  
 Material (plastic), color . . . . . ABS, white



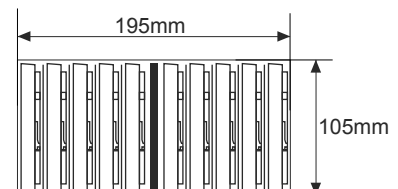
### Connection Diagram



**\*ATTENTION: When the EOL-module is only a capacitor, IT IS OBLIGATORY TO CONNECT a 100K resistor in parallel at the beginning of the line!**

### Packing Information

• **Master box** - 10 units SensoMAG B24D, dimensions 195 x 105 x 105 mm. Additional separators are included in the master box for higher security during transportation.



### Compatible Product Range

• **F10, F10B, R20, S30, M40** - SensoMAG conventional detectors

### Contact Information: