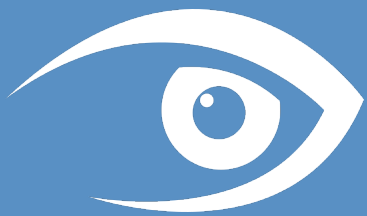


FSM

Fire monitoring System



Software Installation Manual V.5.5

Introduction

FSM is a monitoring software, with client/server platform and a multi-monitor user interface, maps-based, easy to install, to setup and to maintain.

This manual explains how to install the Server and Client software on your computer.

Minimum System Requirements

The computers that will run FSM, must be dedicated specifically to the use of such software. For the Server software, the hardware must have the following minimum system requirements:

- Operating system: Windows 10 64 bit/Windows Server 2012 or Higher
- CPU Intel Core I5 4th Series or higher -> Passmark Score >6500
- At least 8 GB of RAM
- SSD or 10.000 Hard Disk
- Gigabit network card

For the Client software, please refer to the specific manual.

Installation

For installation, you need the following files:

- 1) FSM Server setup
- 2) FSM Client setup

To install FSM, please proceed as follows:

1. Install the software Server in a dedicated machine
2. Enter the License key
 - a. Server PC connected to internet: direct activation
 - b. No local internet connection:
 - i. generate of a license file from the server PC
 - ii. upload this file to the license release web portal
 - iii. upload the outcome from the web portal on the server PC
3. Start the server service
4. Installation of the FSM Client in every client machine and connect them all to the same LAN.



To install the software, you must have administrator rights on your computer.

FSM Server Installation

Launch the installation of FSM Server by double-clicking the Setup.exe file in the archive.

After few second you will see the window of Fig. X01.

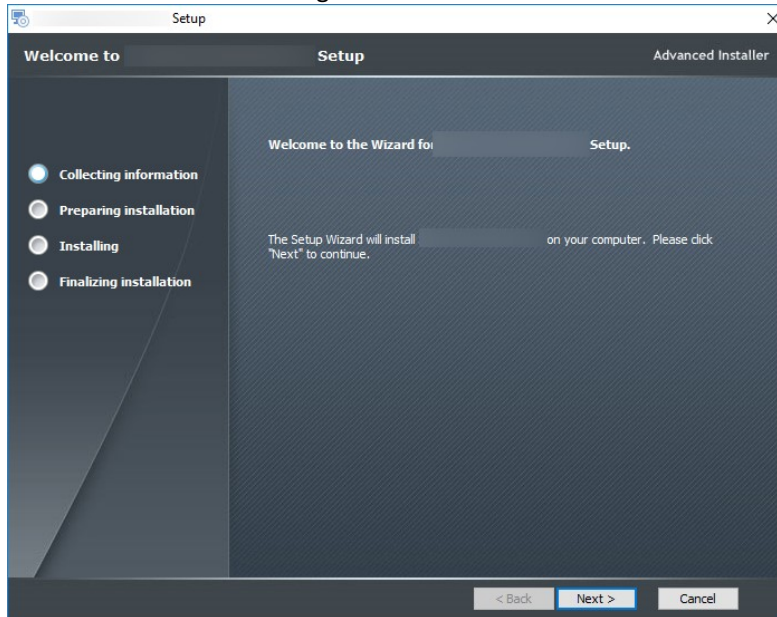


Fig. X01 - Installing Server - start page

Press the Next button.



For maintenance needs it is recommended to use the default folder

Once selected the folder press next.

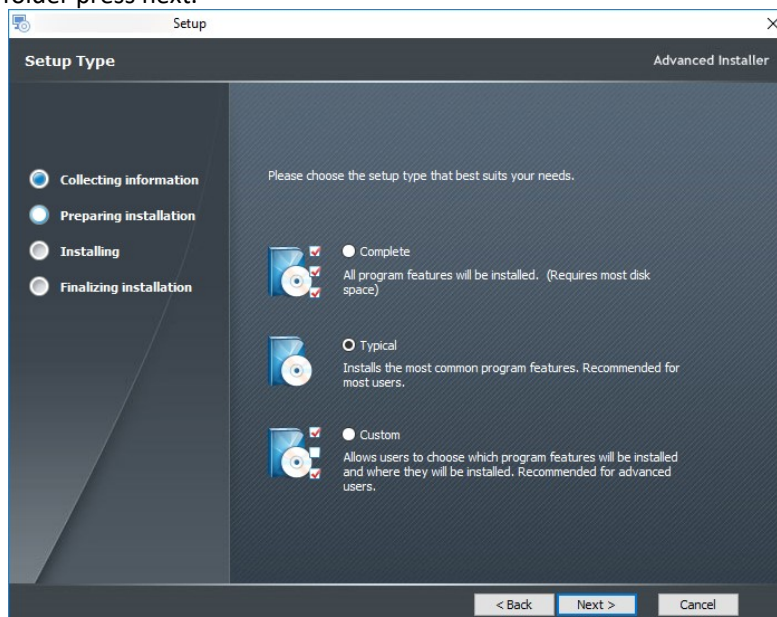


Fig. X02 - Select the type of installation you want to execute.

If FSM is installed on your computer for the first time, select Complete or Typical and click next: the prerequisites for proper functionalities of the software, will be automatically installed.

The installation of SQL Server will help create the database necessary for the system to work; If you use it on machines with SQL Server installations already present and if you have any issue, you should not install SQL Server automatically and proceed with manual installation ([see](#)).

If the prerequisites are already installed (for example software upgrade), you can proceed with the installation of only the FSM core, selecting Custom and press Next. The window shown in Fig.X03 opens.

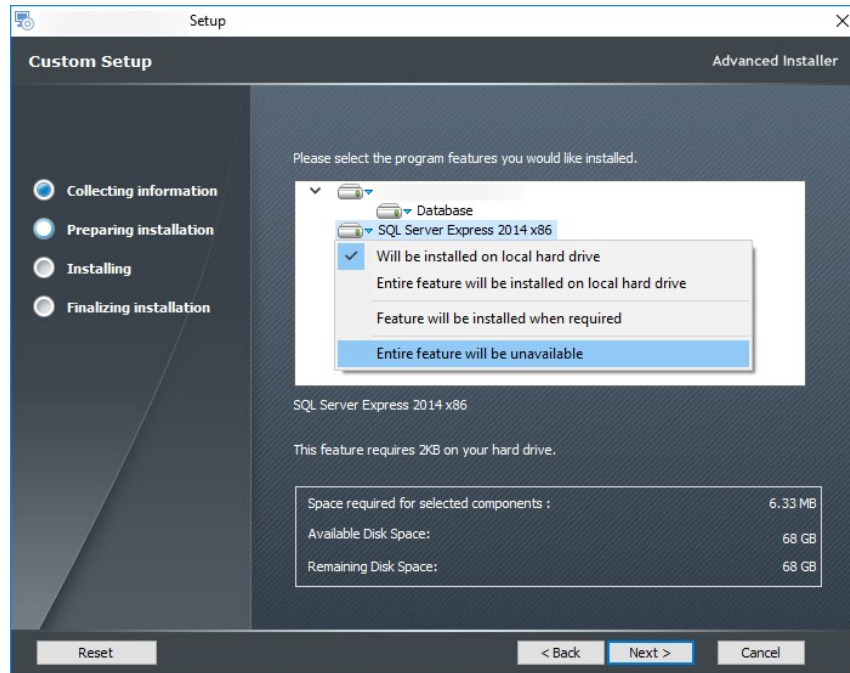


Fig. X03 - Installing FSM Server – custom installation

To deselect SQL Server Express, click with the mouse on the blue triangle next to the name and select the item. The feature will not be installed.

When upgrading, leave selected the "Database", which will update the database to the current version. To confirm your choice, click "Next".

Click "Install" to start the installation of the software.



The installation time is variable, depending on the selected features. If you have chosen to install the SQL server, the procedure may need one or more computer restarts. Before you start the installation procedure, be sure to close all open applications.

During the installation a green bar indicates the progress.

At the end of the installation procedure, a System Configuration tool will appear.

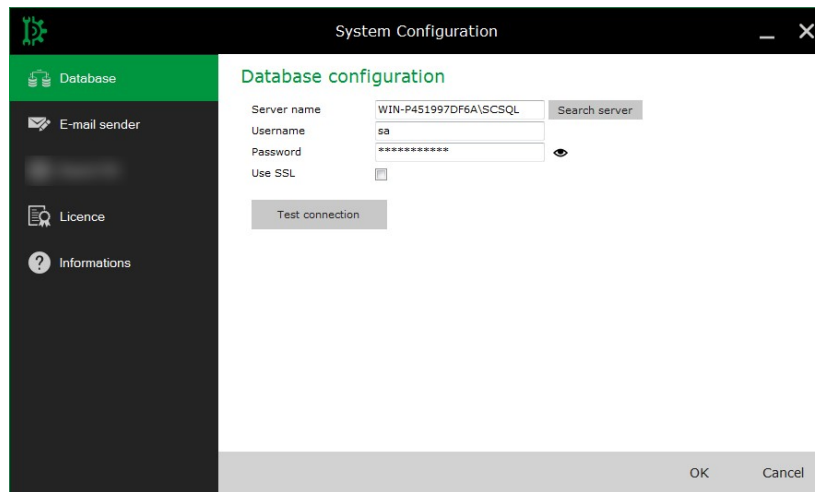


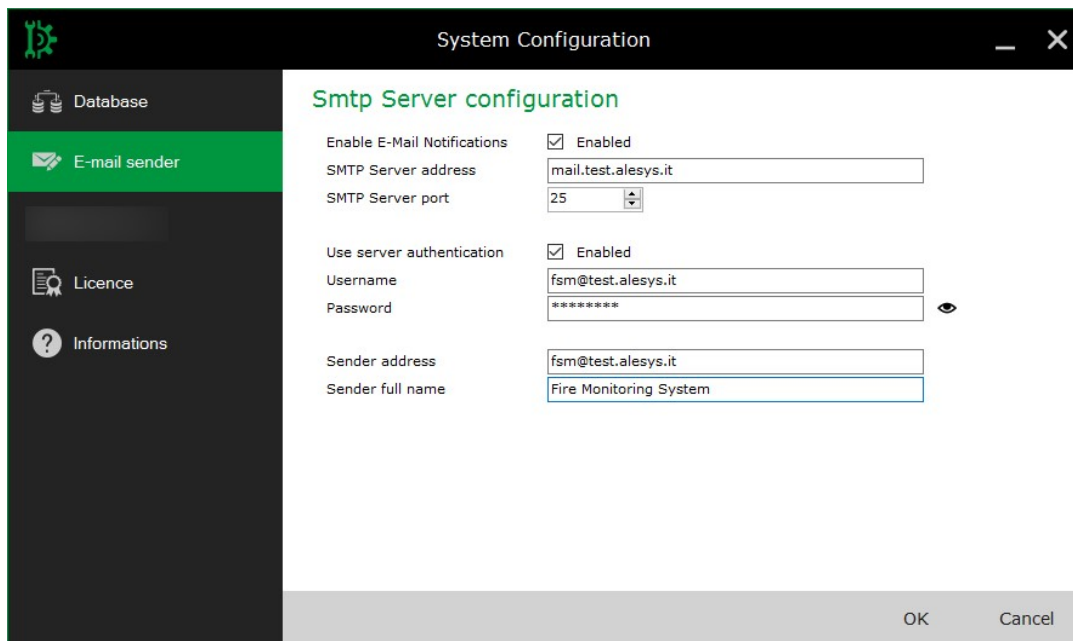
Fig. X04 - Installing Security Control Server – database settings

The parameters in the tab "Database", are automatically generated by the installer and should only be changed by following the advice of technical support.

To ensure better communications between server and clients, change the PC name before "\SCSQL" with the local IP address of the PC and click the test connection button

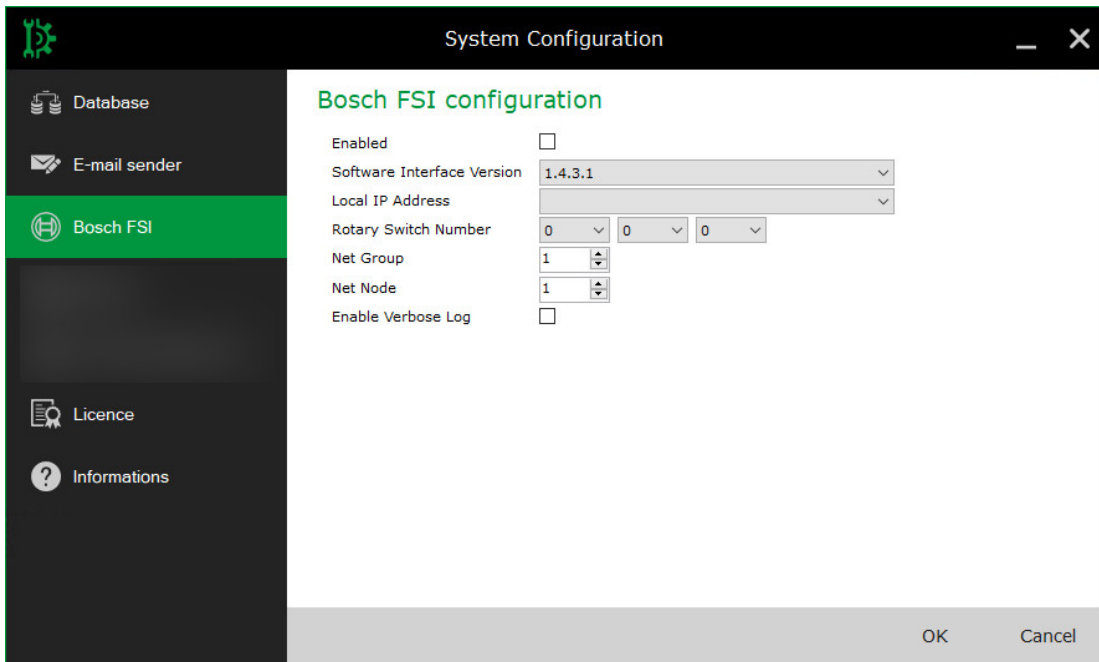
In case of manual installation of SQL Server, these parameters will be set later.

Configure the Mail Sender functions with requested parameters.

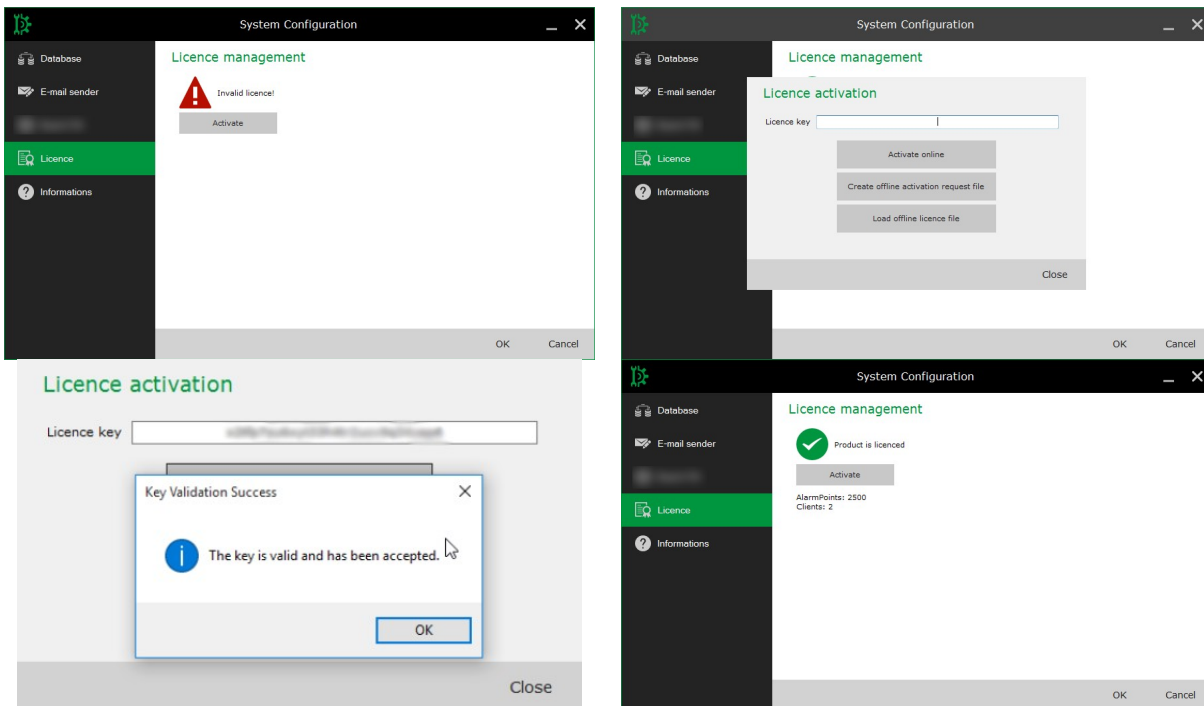


Note: even if not especially requested, it is recommended to create an existing e-mail account, to use as "mail sender" (for example alarmsender@.....), to prevent blocks by anti-spam filters.

For the configuration of the FPA Panels, please refer to the dedicated manual.



License Activation:



For the activation you need the proper license code and you must follow these steps:

In the tab "License" press Activate and enter the "License Key" received:

1. In case the Server PC has an internet connection: press the “Activate online” button to activate the server.



For security reasons, if an internet connection is established to activate FSM license, this internet connection must be removed before the alarm network is put into operation.

2. In case the Server PC doesn't have an internet connection:
 - a. click "Generate offline activation request file" to generate an XML-file which can be uploaded to the activation web portal.
 - b. upload the file to the “offline activation” section of the activation web portal:
<https://activation.alesys.it/InstallKeyWeb/ManualValidationPage.aspx>
 - c. download and save the generated “license key file”.
 - d. select “Load offline license file” and upload the “license key file” received from the offline activation web portal.
3. The panel will show the enabled resources.
4. For license update or upgrade, use the same procedure.

Start FSM Server service

The FSM Server is installed as a Windows service (application that runs background without operator intervention, regardless of the user session in progress) and launched automatically when the system starts operating.

To check the status, select Control Panel → Administrative Tools → Services and select the service FSM Server.

In case of regular running, the Status column will show the string “Running”.

Otherwise, try to start the service manually by clicking the right button and open the context menu.

FSM Client Installation

After verifying that the FSM service works, you're ready to install the Client in the other computers. Launch the installation of FSM Client by double-clicking the Setup.exe file in the archive of the client.

After a few seconds you will see the window with the installation prerequisites.

First of all the installer checks the availability of other necessary software:

- Microsoft DirectX 9 or higher
- Microsoft .NET Framework 4.5
- Microsoft .NET Framework 3.5.1

If this software is already installed (for PCs running Windows 7, Windows 8, Windows 10 or a previous installation of the software), installer will proceed directly with the first installation window (fig. X09), otherwise the installation will start automatically the necessary forms.

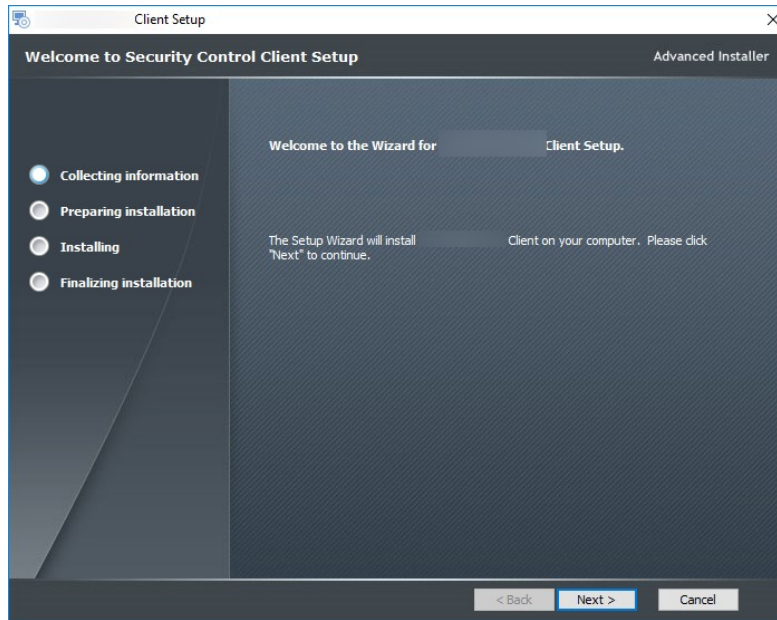


Fig. X09 - Installing SC Client - start procedure

Press the Next button and select the location where the software shall be installed (fig. X12).



For maintenance reasons, it is recommended to use the default folder

Click next to start the installation process.

During the installation, a green bar indicates the progress.

At the end of the installation, the connection test window appears (Fig. X10).

Set the IP address of the computer where the FSM Server is installed then press the test button and wait for the result of the test (Figure X10):

- In case of success you can complete the installation of the client.
- In case of failure check the status of the server before repeating the operation.
- If Database connection faults, see the proper solution for SQL Server rules.

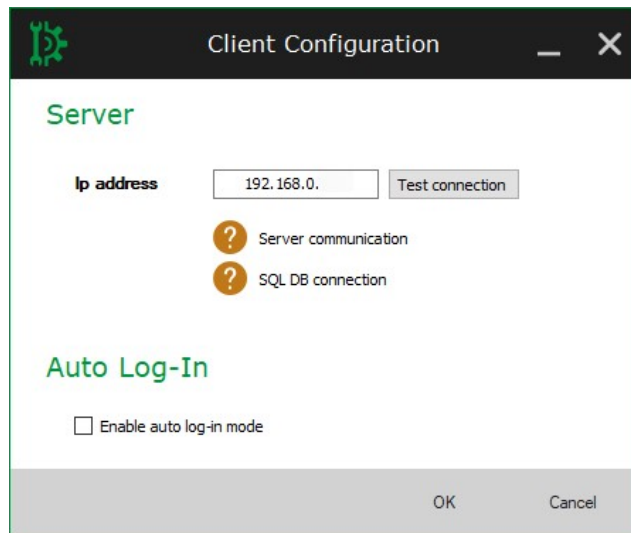


Fig. X10 - Installing FSM Client – Client-Server connection test

Auto login mode allows to activate the auto login mode to start the Client without requesting user credentials (not recommended for security reasons).

Press the OK button to continue and the system suggests to opens the Client application.

Press Finish to complete the installation and proceed with the verification.

Checking installation

You can check the result of the installation (for both Server and Client), by launching the Client from the Start menu or the desktop icon.

The correct display of the login window reports the success of the installation.

In case of errors, the warning window displays the event of incorrect operation of the system:

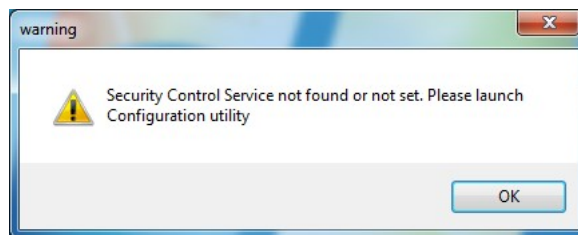


Fig. X11: Warning Window

1. Verify that FSM Server is started.
2. Check the status of the connection Server/Client, using the “RegConfig” utility in the Start Menu.

ADDENDUM – Manual installation of SQL Server

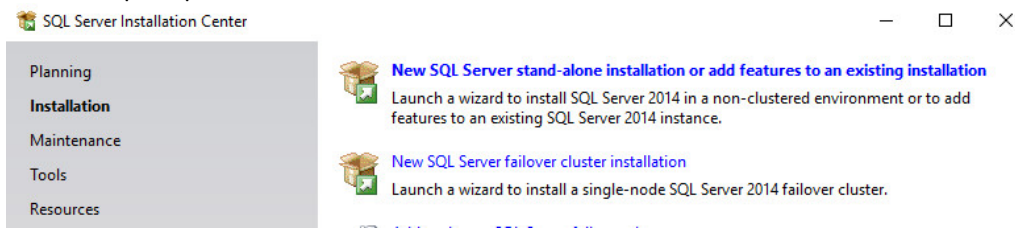
In special situations where the Server software is installed on a PC that already has versions of SQL Server for other products, we recommend that you manually install a version of SQL Server to create the instance required for the FSM database and its operation.

The Express version of SQL Server is enough for FSM to work; you can download version 2014 from the Microsoft site (check language and version of the operating system, English is recommended):

https://www.microsoft.com/en-in/download/details.aspx?id=42299&WT.mc_id=rss_alldownloads_devresources

After extracting the installation files, start the SETUP as an administrator and follow the wizard.

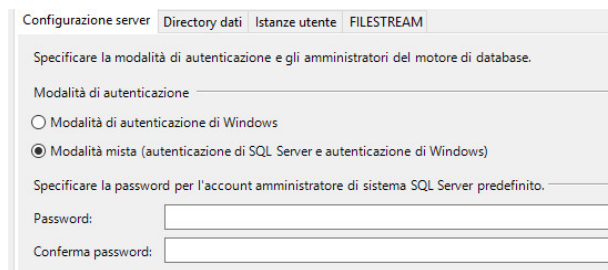
- When prompted select "New stand-alone Installation of SQL Server":



Continue the wizard by accepting all the required settings and when prompted select "Run New SQL Server 2014 Installation" and then create a new instance and name it: SCSQL.

Continue the wizard by accepting all the required settings.

- When prompted, select the *mixed authentication mode* and enter the password for the DB: Choose SqlAdmin\$01.

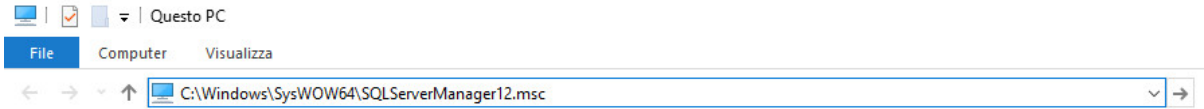


End the installation of SQL Server and close the installer, you may be prompted to restart the PC.

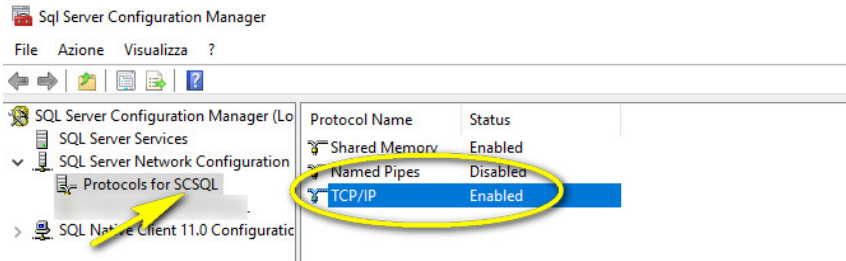
After you have completed the installation, you must ensure that the TCP connections for the database is enabled.

Open the SQL Server Configuration Manager or open file Explorer and copy to the address bar the following address (for 32-bit systems, *C:\Windows\system32\SQLServerManager10.msc*):

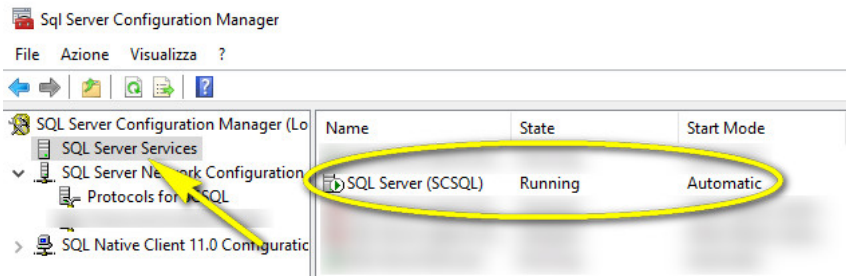
C:\Windows\SysWOW64\SQLServerManager12.msc



The SQL Server Configuration Manager will open: Locate SCSQL and enable the TCP/IP.



After you enable TCP, go to the Services section, locate the SQL service related to SCSQL and start (or restart if it was already active).



After starting the SCSQL service, you can launch the SCDBINSTALLER tool located in the Server installation folder, to create the database required for the program to work.

- When prompted by the tool, select the SCSQL database and enter the required login parameters: as admin enter the user "sa" (universal for SQL Server) and as a password, enter the one used when creating the DB.

After updating the database, open the System Configuration application that is located in the Server installation folder, and enter the authentication data for the database: from the program, you can also verify the correct connection to the DB (see previous FSM Server installation steps).

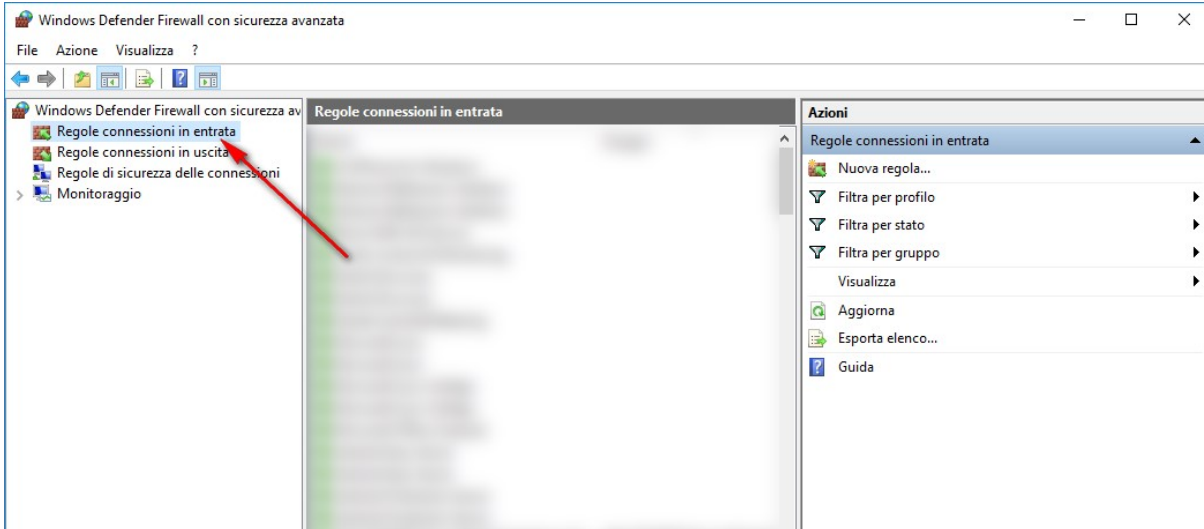


If an error occurs, please contact technical support.

WARNING: If you have changed the database name or password, store it for future maintenance needs by Technical Support.

ADDENDUM – SQL Server firewall rules

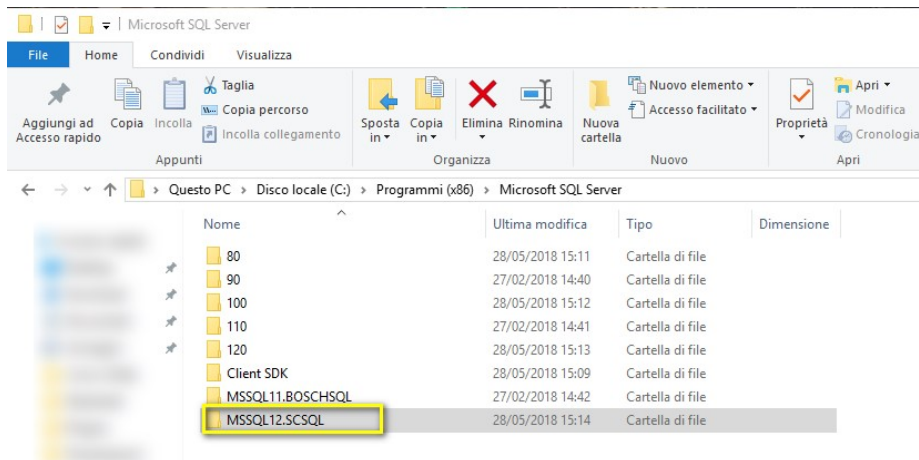
In case of further connection problems (SQL Server service not found or not accessible) it may be necessary to configure inbound rules on the server PC firewall.



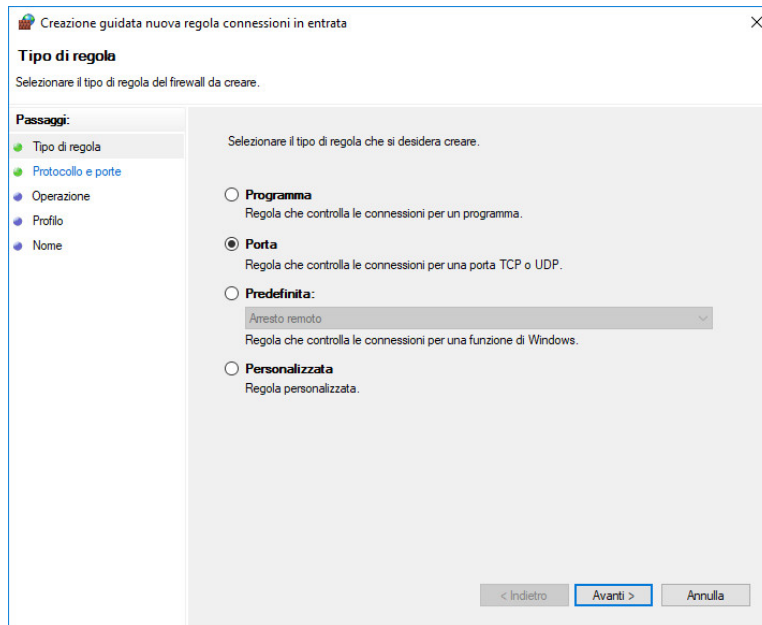
In the advanced settings of the Windows firewall, create 3 new incoming rules:

SQL Server Service

In the new rule window, select PROGRAM and open the search window for the related exe; look for the installation path of the Security Control instance (SCSQL), typically C:\programs(x86)\SQLServer and continue to the BINN folder; inside it select the "sqlservr" file and grant authorization to all connections.

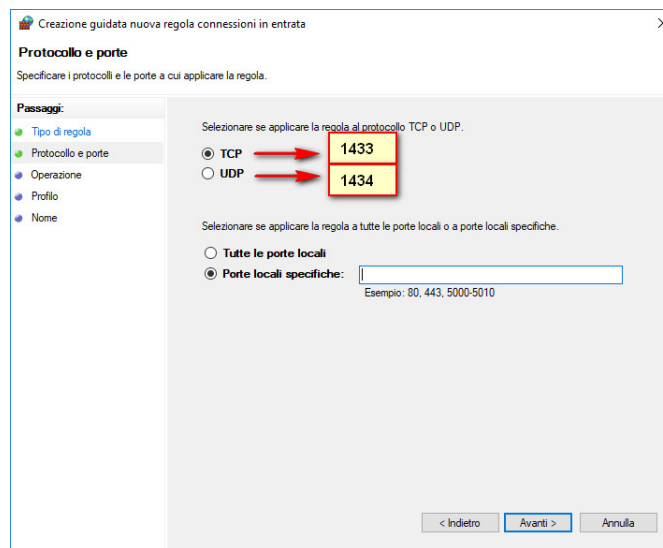


SQL Server ports



Create two separate incoming rules for the ports entry, selecting the following parameters for each rule:

- TCP port: **1433**.
- UDP port: **1434**.



After creating the rules, restart the Security Control Server service.

For information on SQL Server and Windows Firewall:

- <https://social.msdn.microsoft.com/Forums/sqlserver/en-US/b1907c22-6892-4b63-8feb-941d40d05bd1/connectivity-issue-with-sql-server-2014?forum=sqlsetupandupgrade>
- <https://docs.microsoft.com/it-it/sql/sql-server/install/configure-the-windows-firewall-to-allow-sql-server-access?view=sql-server-2017>



Alesys Srl

+39 0331 21 94 36 – www.alesys.it

via P. Reginaldo Giuliani, 539

21044 Cavaria con Premezzo -VA-