

FSM

Fire monitoring System

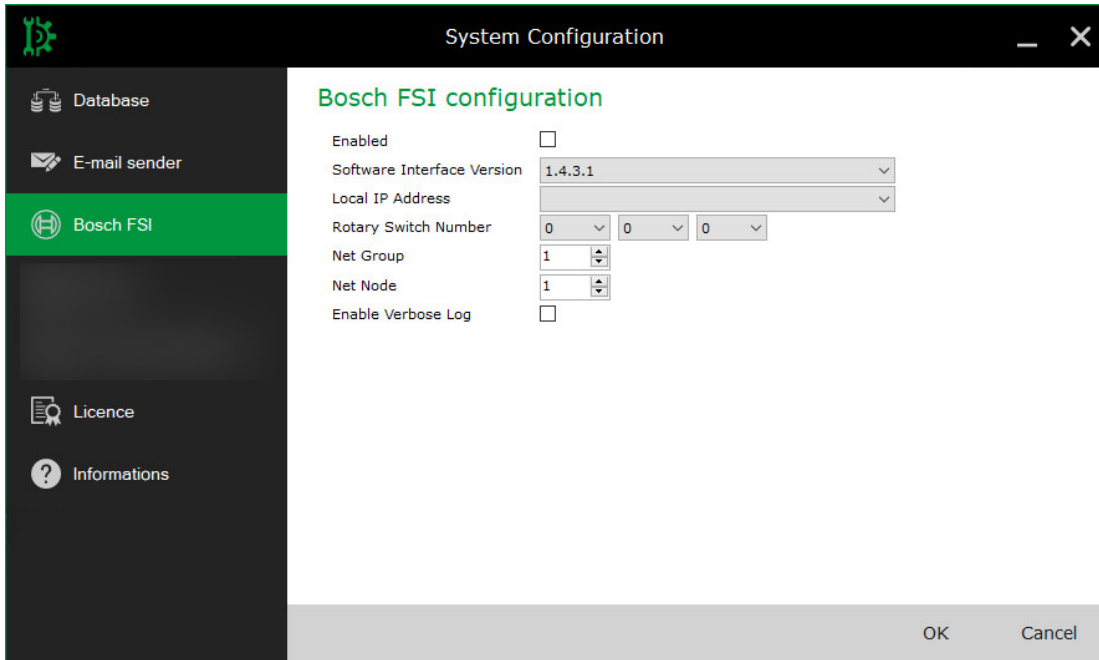


FSI Installation Manual V.5.5

This manual explains how to configure the BOSCH FPA panels with FSM and FSI driver.
For the first operations, the RPS software must be present and the FSM Server software must be installed.

FSM Server - SYSTEM CONFIGURATION

The first step is to install FSM Server and opens the system configuration tool in the FSI tab.



In addition to activating the interface, the following parameters must be configured:

- **Software Interface Version:** depends on the firmware of the panel; with the latest firmware (recommended updating to the latest version) select the 1.4.3.1.
- **Local IP address:** select the Server IP address; it will be added in the panel with RPS software.
- **Rotary Switch Number:** it must match the value in the configuration (via RPS software).
- **Net Group e Net Node:** it must match the value in the configuration (via RPS software) of the OPC server.
- **Enable Verbose Log:** to be activated if needed, it enables all maintenance reports that can normally be ignored.

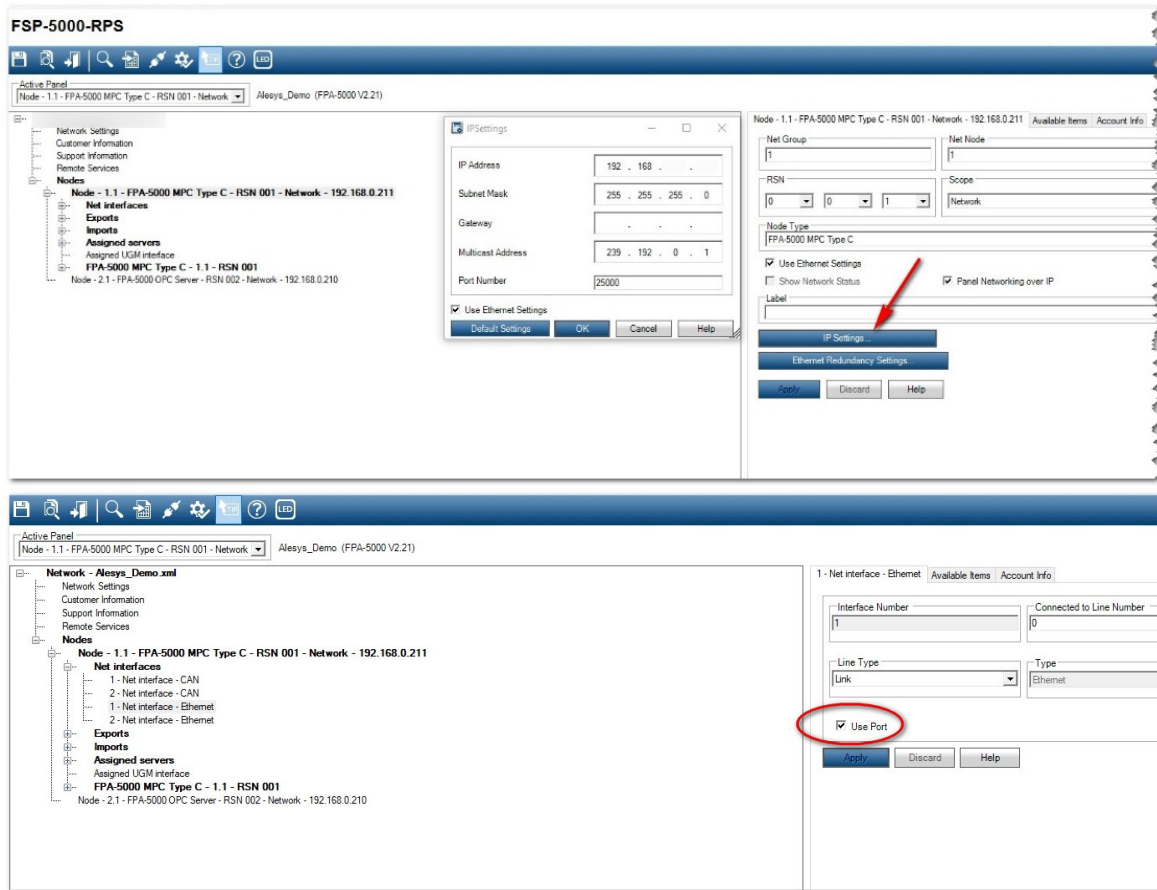
PANEL – KEYPAD settings

Log in with USER 9 in **settings\network services\ethernet:**

- Check “Use ethernet settings”.
- Set the IP address, subnet mask, gateway and other parameters in “IP settings”.
- All of these settings must be replicated in the configuration with RPS software:

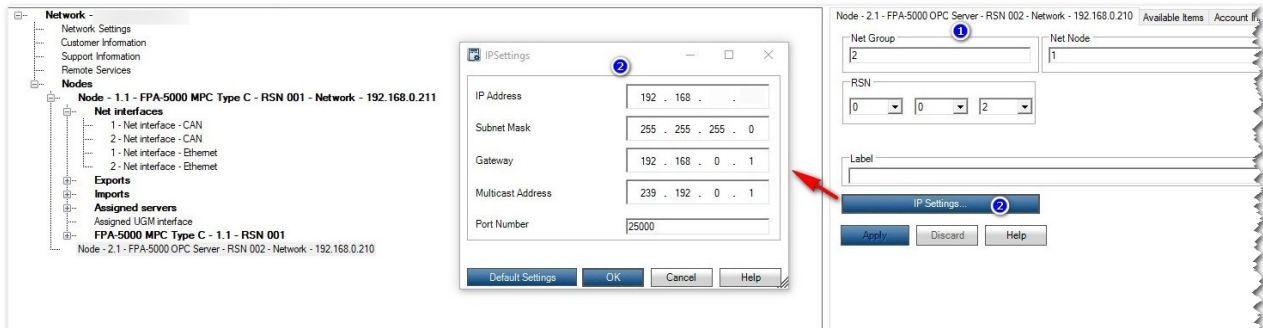
BOSCH RPS Settings

As the first settings, the use of the network card and the IP address of the control panel must be configured.



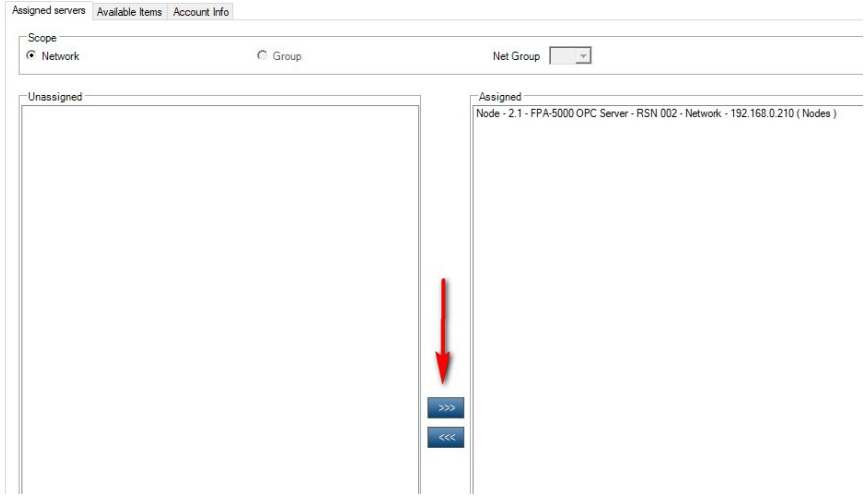
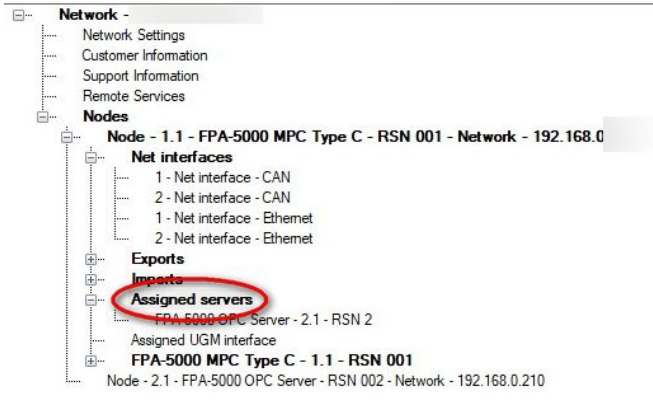
In the main node select **IP Settings** and configure IP address, Subnet Mask and other parameters as configured in the panel with the keypad.
Check in the two windows "Use Ethernet Settings".
Then configure the Net interface 1 and check **Use Port**.

After setting the address, right-click on the node entry and select the "Create OPC FPA server - ****" item, to create the OPC interface that will communicate with the software; a new OPC Server node to be configured will be added:



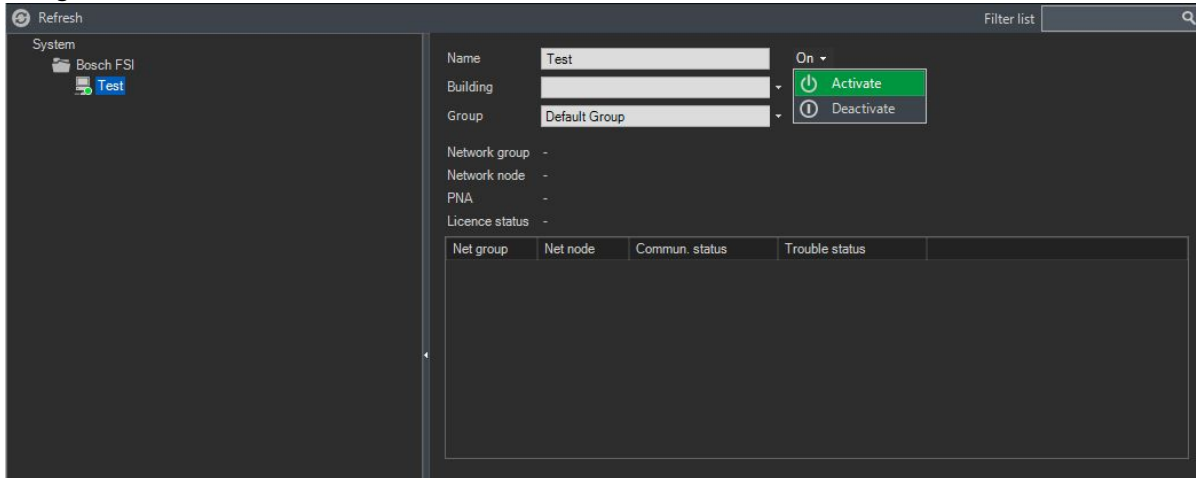
- 1: the entries **Net Group**, **Net Node** and the **Rotary Switch** number, are the values the needs to be configured in the System Configuration tool of FSM Server.
- 2: the **IP address** is the Server address, which is in the System Configuration tool of FSM Server.

After creating the OPC node, enter the **Assigned Server** menu and set the node assigned as "assigned" using the appropriate button.



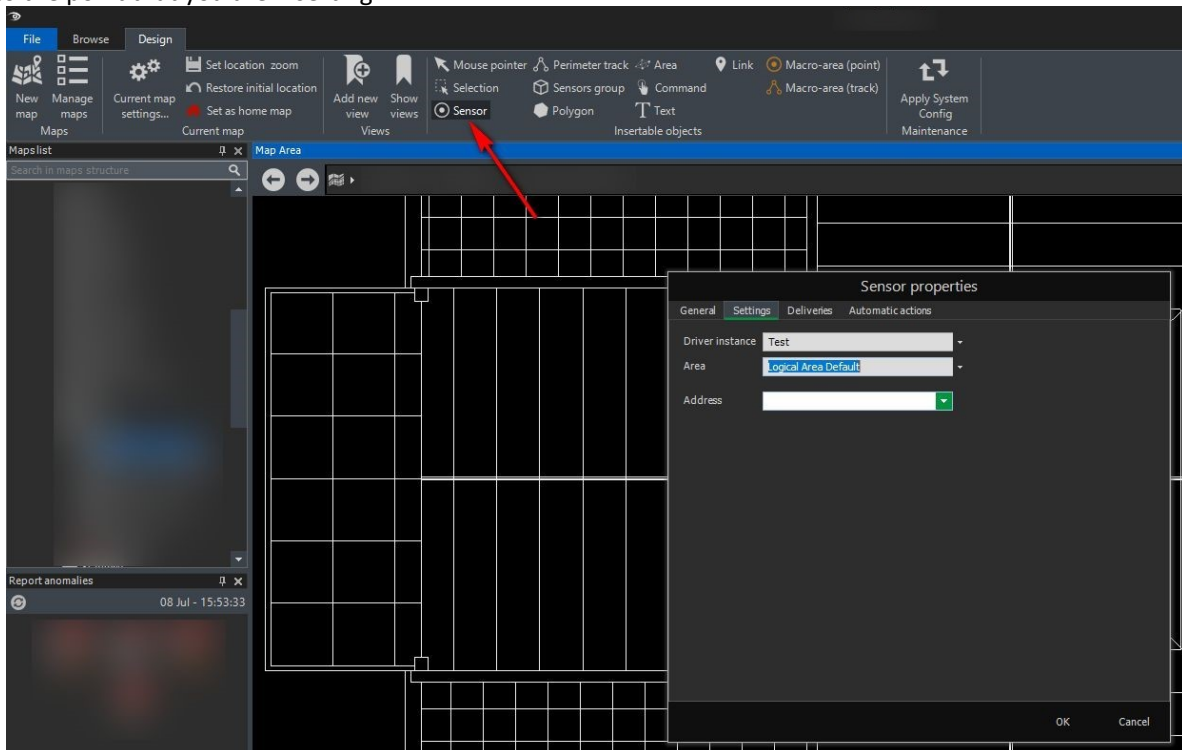
FSM Client

After sending the parameters to the control panel and starting the Server service, the control panel will be configured in the FSM Client:



Select the Bosch FSI driver and click “configure” in order to put the custom information related to the panel (name, building, group); the panel is active by default, if not, select “Activate” and the panel will be activated and download the whole configuration in the system, so it will be possible to configure points in the map in an easy way.

Adding a new sensor, in the tab Settings you can select the panel, the area and the proper address related to the point that you are inserting.





Alesys Srl

+39 0331 21 94 36 – www.alesys.it

via P. Reginaldo Giuliani, 539

21044 Cavaria con Premezzo -VA-