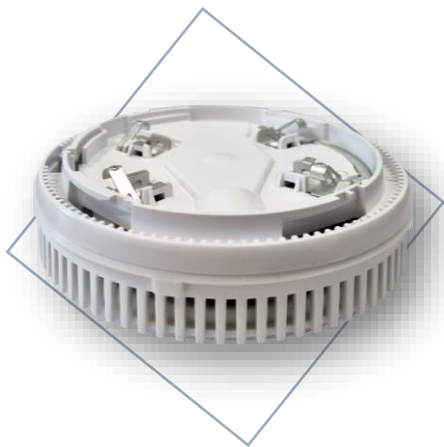


Analogue - addressable sounder with base and built-in isolator module



- Ceiling mount sounder with built-in standard base
- Built-in isolator module
- 32 different tone types at two sound levels

SensolRIS CSOU IS is a sounder with integrated base for SensolRIS detectors and with built-in isolator module. SensolRIS CSOU IS is compatible for mounting on all models standard bases for SensolRIS devices - SensolRIS B124 and SensolRIS B124-HP

The sounder supports 32 different tone types at two sound levels. The tone type and sound level are programmed from the control panel.

The SensolRIS CSOU IS is compatible for operation with SensolRIS analogue - addressable detectors series: T110 (IS), S130 (IS) and M140 (IS).

The device also has a build-in isolator module for protection against short-circuit.

Features

- One point of installation for detector, sounder and visual indicator with no additional wiring
- 32 tone types selectable from the panel
- Up to 100 sounders on loop (on low level sound)
- Loop synchronization for uniform and clear alarm signal
- Protection Degree -IP21C, type A
- Sounder Type: A
- Loop powered
- Compatible with SensolRIS detector series
- Mounts directly on standard B124 or B124-HP to save time
- Optional cover when the base is used only as a sounder
- Build-in isolator module

Technical Specifications

Operating Voltage Range	16 - 32VDC
Maximal consumption at communication	470 μ A @ 27VDC
Maximal consumption (main tone type 27):	
- low volume level	3 mA @ 27VDC
- high volume level	10 mA @ 27VDC
Power volume:	
- low volume (up to 100 pcs sounders* to the loop).	~ 81dB (A) \pm 3dB @ 1m
- high volume (up to 30 pcs sounders* to the loop)	~ 88dB (A) \pm 3dB @ 1m
Wire Gauge for terminals	0.4 - 2.0mm ²
Material and color	ABS / White
Dimensions	105 x 22 mm

Last update: 07.2023