

Intruder Alarm Solutions



Keeping you safe

Teletek Electronics JSC is a leading manufacturer and a global supplier of security technology and services specialized in the field of intruder and fire alarm systems.

Founded in 1991 with headquarters in Sofia, Bulgaria the company has experienced a remarkable growth for the last 3 decades including innovations, state-of-the-art technology and reliable partnerships all over the globe.

With more than 200 experienced experts and still growing, our team aims at bringing excellence, quality and reliability into the lives of all customers. We have brought 3 decades of knowledge and expertise to the development of cutting edge security systems working closely with industry organizations, suppliers and customers to shape the future of alarm and fire safety.

One of the most priceless values contributing to our company`s success in today`s world is our professionals – people who love what they do and who know how to do it. Our employees who have been part of our family for 30 years encourage us to do our best for the upcoming generations and they honor us by making us part of their lives.



Complete Systems Supplier

Our portfolio includes a full range of alarm and fire alarm solutions as well as communication modules and software for applications in security and monitoring systems.

Our systems are easy to configure, install, maintain and monitor and can easily be expanded to adapt to the necessities of your growing business.

Products within the range, including state-of-the-art control panels, detectors and alarm devices are quality-assured through a process of strict piece-by-piece and system-by-system testing.

We strive for transforming complex challenges into effective comprehensive products and system solutions ensuring that our customers can operate efficiently and keep maintenance costs down.



Stable and reliable partner

We export our products to over 90 countries across 5 continents. With most of our Distributors we have been not only Partners but also friends with relations for over 20 years.

Our aim is to understand our Customers' needs and respond with innovations, improvements and new solutions for our industry and markets.



Reliable detection solutions

We have gained serious knowledge and experience in the design and the production of alarm and detection systems. We offer the right solutions based on your needs and requirements.

Trust us and we will continue developing in our industry and supporting you so that you can benefit from our solutions and incorporate them into your business.

Business expansion

New company headquarter and production with total area of over 11 200m²

3750m² OFFICE ADMINISTRATION
with:

- Training and meeting halls
- 1200m² R&D offices & EMC Lab

4300m² PRODUCTION AREA
with:

- 3 fully automated SMD lines
- Wave soldering area
- Final assembling area
- Automation assembly line for smoke detectors
- 24-hour live operation test area
- Service and repair shop area

2600m² STORAGE & CARGO AREA
with:

- 3000 pallet spaces
- 5 handling spots
- 2 handling spots with bridges
- 1 handling spot for small trucks



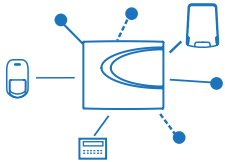
Intruder Solutions

When it comes to professional security system, the installers preferred to use a wired intruder panels for many years. Wired systems are stable, hard to overcome by the intruders and easy to work with. However, in the past few years the intruder systems have been developing, together with the wireless technologies. Hybrid intruder panels combine the professional approach of the wired systems with the flexible benefits of the wireless technology.

Eclipse Series is the way Teletek Electronics JSC answers the need of a professional intruder alarm systems for each type of installation. Product of more than 30 years of experience in the field of the security solutions, the Eclipse series: Eclipse 8+, Eclipse 16, Eclipse 32 and Eclipse 99.

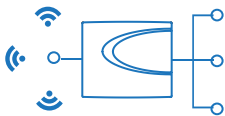
The Eclipse series provides easy installation, programming and operation. All the panels support several different types of programming: address, operational and text menu programming, through the Eclipse keypads. Those three methods are widely recognized, as they've been used by the installers for many years. The panels can also be programmed with our programming software ProsTE, as well as remotely through our Cloud solution, when the panel is equipped with one of our communication modules.





Rich and fully compatible periphery device range

The Eclipse series also offer a great range of periphery devices. Several different LED and LCD keypads, a touch-screen keypad, zone expanders, output expanders, Proximity card reader and last but not least a Wireless periphery. Each Eclipse keypad is fully compatible with all the panels in the range, which gives the installers the freedom to select the configuration of the system, depending on the installation needs.



Hybrid solution

The incorporation between wired and wireless devices provides a great benefit to the intruder systems, as it makes the intruder systems more versatile than they've ever been. The hybrid system is also the perfect choice when it comes to building on an already existing and working system.



Communication options

All the panels support several different communication channels. A built-in serial port gives the option to connect a GPRS or LAN communication modules. These modules could send events to a monitoring station by using our Cloud software Ajax SP Pro, or by using a standard SIA-09 communication protocol. As an additional option, the GPRS module allows the sending of SMS messages and voice messages to the end-user over the GSM network.

Each panel is also equipped with a built-in telephone communicator (PSTN) that could be used for sending events to a monitoring station through standard protocols – CID or SIA. The land line connection also allows the usage of voice dialler module (Eclipse VD). This module supports prerecorded voice messages to be send to an end user or monitoring, as well as special voice guide menu that could be used to control the system from distance, over a phone call.



Remote Connection and Control

When connected to our Cloud software, over GPRS or LAN module connection, the system could be accessed remotely over the Ajax WEB portal or with our mobile application Home ProTECT. The WEB portal allows the installers and users to access the systems remotely - to control the system (arm, disarm), to check for malfunctions and even to change the settings of the panel.

The Home ProTECT mobile application gives the option for self-monitoring by the end users. It can send push notifications for any event in the system and it is also able to control the system remotely. Home ProTECT is free and it is supported by both Android and iOS operation systems.

Hybrid

Intruder Control Panels

	Eclipse 99	Eclipse 32	Eclipse 16	Eclipse 8+
Zones on board	8 (16 with doubling)	8 (16 with doubling)	16	8 (16 with doubling)
Max. Zones	99	32	16	16
PGM Outputs on board	5	5	5	5
Max. PGM Outputs	99	32	8	8
Areas	16	8	3	3
Zone doubling	✓	✓	✗	✓
Hybrid system	✓	✓	✓	✓
Zone expander module	✓	✓	✓	✓
PGM expander module	✓	✓	✗	✗
Wireless expander module	up to 4	up to 4	up to 4	up to 4
• Max. wireless detectors	99	32	16	16
• Max. wireless sirens	99	32	3	3
• Max. remote controls	99	64	32	32
User codes or proxy cards	99	64	32	32
Event log	5000	1024	1024	1024
Power supply	2.5A	2.5A	1A	1A
Keypads	LED, LCD, TFT	LED, LCD, TFT	LED, LCD, TFT	LED, LCD, TFT
Time attendance	✓	✓	✗	✗
Max. BUS devices	30	30	5	5

Installer Advantages

- ESD protection against storm discharge
- Real time view of the resistance on each zone
- Real time view of the communication quality on the BUS
- Service keypad interface on board
- Micro USB port for programming and firmware update
- Status indicator on each device for: short circuit, low voltage and wiring error on the bus
- 45-degree terminals
- Color-coded terminals

Eclipse 99

Hybrid Intruder Alarm Control Panel

EN50131



- High-end hybrid solution with time attendance functions for security of large commercial and office premises
- Up to 99 zones
- Up to 16 areas
- Remote control and monitoring via Home ProTTEct (iOS/Android) application
- Second entry time per area
- 3 alternative types of programming - by addresses, by operations or using tree structure text menus
- Up to 30 devices connected to the system bus: LED, LCD and TFT keyboards, Zone/PGM/Wireless expander modules, proximity card readers

Technical Specifications

Main power supply:	230VAC +10%/-15%
Frequency:	50/60Hz
Mains transformer:	21VAC/50VA
Accumulator battery:	1x12V/7Ah
Battery charger:	13.8VDC/2.5A fuse
Current consumption of control panel:	100mA
Relay output (NC/NO):	10A@250VAC 10A@30VDC
Operating temperature range:	from 0°C to +50°C
Enclosure box:	ABS plastic, white
Dimensions:	335x290x105mm

Features

Zone Inputs:	8 physical inputs on the control panel for connecting of detectors.
Zones:	99, with freely programmable parameters.
Zone wiring:	9 types, single or doubling connection style.
Areas:	16 independent
Time attendance: (via proximity card readers)	16 Time slots (tables) to manage the user access to the protected sites. Every time slot can be programmed individually according to the system requirements.
Outputs:	3 weak (up to 100mA), 1 powerful supervised siren (up to 1A), 1 relay situated on the control panel. Expanding up to 99 outputs using PGM expander module. Available programming of PGM4 for realization of two-wire connection of standard fire alarm bases.
Access codes:	4/6 digit; 99 User/Manager codes, 1 Maintenance code, 1 Engineer code.
Memory LOG:	5000 events
Report to monitoring station:	Built-in digital communicator for telephone line reporting – CID and SIA protocols supported. TTE GPRS Standard/TTE GPRS Simple/TTE LAN communication modules.

Eclipse 32

Hybrid Intruder Alarm Control Panel

EN50131



- Hybrid solution with impressive functionality for security of medium sized commercial premises and offices
- Up to 32 zones
- Up to 8 areas
- Remote control and monitoring via Home ProTTEct (iOS/Android) application
- Second entry time per area
- 3 alternative types of programming - by addresses, by operations or using tree structure text menus
- Up to 30 devices connected to the system bus: LED, LCD and TFT keyboards, Zone/PGM/Wireless expander modules, proximity card readers

Technical Specifications

Main power supply:	230VAC +10%/-15%
Frequency:	50/60Hz
Mains transformer:	21VAC/50VA
Accumulator battery:	1x12V/7Ah
Battery charger:	13.8VDC/2.5A fuse
Current consumption of control panel:	100mA
Operating temperature range:	from 0°C to +50°C
Enclosure box:	ABS plastic, white
Dimensions:	335x290x105mm

Features

Zone Inputs:	8 physical inputs on the control panel for connecting of detectors.
Zones:	32, with freely programmable parameters.
Zone wiring:	9 types, single or doubling connection style.
Areas:	8 independent
Time attendance: (via proximity card readers)	8 Time slots (tables) to manage the user access to the protected sites. Every time slot can be programmed individually according to the system requirements.
Outputs:	4 weak (up to 100mA) and 1 powerful supervised siren (up to 1A), situated on the control panel. Expanding up to 32 outputs using PGM expander module. Available programming of PGM4 for realization of two-wire connection of standard fire alarm bases.
Access codes:	4/6 digit; 64 User/Manager codes, 1 Maintenance code, 1 Engineer code.
Memory LOG:	1024 events
Report to monitoring station:	Built-in digital communicator for telephone line reporting – CID and SIA protocols supported. TTE GPRS Standard/TTE GPRS Simple/TTE LAN communication modules.

Eclipse 16

Hybrid Intruder Alarm Control Panel

EN50131



- Hybrid entry level solution for security of middle size residential, commercial or office premises
- 16 zones
- 3 areas
- Remote control and monitoring via Home ProTTEct (iOS/Android) application
- Second entry time per area
- 3 alternative types of programming - by addresses, by operations or using tree structure text menus
- Up to 5 devices connected to the system bus: LED, LCD and TFT keyboards, Zone/Wireless expander modules, proximity card readers

Technical Specifications

Main power supply:	230VAC +10%/-15%
Frequency:	50/60Hz
Mains transformer:	17VAC/23VA
Accumulator battery:	1x12V/7Ah
Battery charger:	13.8VDC/0.75A fuse
Current consumption of control panel:	100mA
Operating temperature range:	from 0°C to +50°C
Enclosure box:	ABS plastic, white
Dimensions:	290x240x80mm

Features

Zone Inputs:	16 physical inputs on the control panel for connecting of detectors.
Zones:	16, with freely programmable parameters.
Zone wiring:	5 types, single connection style.
Areas:	3 independent
Outputs:	4 weak (up to 100mA) and 1 powerful (up to 1A) programmable outputs OC (open collector) type. 3 logical programmable outputs. Range of activation events for outputs management.
Access codes:	4 digit; 32 User codes (1 Manager + 31 Users), 1 Engineer code.
Memory LOG:	1024 events
Report to monitoring station:	Built-in digital communicator for telephone line reporting – CID and SIA protocols supported. TTE GPRS Standard/TTE GPRS Simple/ TTE LAN communication modules.

Eclipse 8+

Hybrid Intruder Alarm Control Panel

EN50131



- Hybrid middle entry level solution for security of middle size residential, commercial or office premises
- Up to 16 zones
- 3 areas
- Remote control and monitoring via Home ProTTEct (iOS/Android) application
- Second entry time per area
- 3 alternative types of programming - by addresses, by operations or using tree structure text menus
- Up to 5 devices connected to the system bus: LED, LCD and TFT keyboards, Zone/Wireless expander modules, proximity card readers

Technical Specifications

Main power supply:	230VAC +10%/-15%
Frequency:	50/60Hz
Mains transformer:	17VAC/17VA
Accumulator battery:	1x12V/7Ah
Battery charger:	13.8VDC/0.75A fuse
Current consumption of control panel:	100mA
Operating temperature range:	from 0°C to +50°C
Enclosure box:	ABS plastic, white
Dimensions:	290x240x80mm

Features

Zone Inputs:	8 physical inputs on the control panel for connecting of detectors.
Zones:	16, with freely programmable parameters.
Zone wiring:	9 types, single or doubling connection style.
Areas:	3 independent
Outputs:	4 weak (up to 100mA) and 1 powerful (up to 1A) programmable outputs OC (open collector) type. 3 logical programmable outputs. Range of activation events for outputs management.
Access codes:	4 digit; 32 User codes (1 Manager + 31 Users), 1 Engineer code.
Memory LOG:	1024 events
Report to monitoring station:	Built-in digital communicator for telephone line reporting – CID and SIA protocols supported. TTE GPRS Standard/TTE GPRS Simple/ TTE LAN communication modules.

Eclipse

Keyboards and Readers



Eclipse HMI

- Control keyboard with 5-inch TFT display
- Quick buttons for arming and disarming
- Screensaver option
- 3 fast button for sending of PANIC, MEDICAL and FIRE alarm
- Slim and compact design
- Bidirectional TAMPER switch
- Multi language support
- 1 Zone input
- 1 PGM output



Eclipse LCD32S PR

- LCD keypad with sensitive buttons
- Text display for 2x16 symbols organized into two rows
- Quick buttons for arming and review of Memory, Troubles and Bypassed zones
- Adjustable intensity of backlight for the display and buttons
- 3 fast button combinations for sending of PANIC, MEDICAL and FIRE alarm
- Confidential mode
- Adjustable buzzer volume and text scroll up
- Bidirectional TAMPER switch
- Multi language support
- Built-in proxy card reader



Eclipse LCD32/PR

- LCD keypad with silicon buttons
- Text display for 2x16 symbols organized into two rows
- Quick buttons for arming and review of Memory, Troubles and Bypassed zones
- 3 fast button combinations for sending of PANIC, MEDICAL and FIRE
- Confidential mode
- Adjustable intensity of backlight for the display and buttons
- Adjustable buzzer volume and text scroll up
- Bidirectional TAMPER switch
- Multi language support
- Built-in proxy card reader as option



Eclipse LED32/PR

- LED keypad
- Indication for 32 zones and 8 areas
- Supports 2 programming types: by addresses and by operations
- Quick buttons for arming and review of Memory, Troubles and Bypassed zones
- Adjustable intensity of backlight for the buttons
- 3 fast button combinations for sending of PANIC, MEDICAL and FIRE alarm
- Adjustable buzzer volume
- Bidirectional TAMPER switch
- Built-in proxy card reader as option

Eclipse

Keyboards and Readers



Eclipse LED16A VG

- LED keypad with voice guiding
- Voice messages announcing for system status and faults
- Indication for 16 zones and 3 areas
- Supports 2 programming types: by addresses and by operations
- Quick buttons for arming and review of Memory, Troubles and Bypassed zones
- Adjustable intensity of backlight for the buttons
- 3 fast button combinations for sending of PANIC, MEDICAL and FIRE alarm
- Adjustable buzzer volume
- Bidirectional TAMPER switch



Eclipse LED16A

- LED keypad
- Indication for 16 zones and 3 areas
- Supports 2 programming types: by addresses and by operations
- Quick buttons for all arming modes
- Adjustable intensity of backlight for the buttons
- 3 fast button combinations for sending of PANIC, MEDICAL and FIRE alarm
- Adjustable buzzer volume
- Bidirectional TAMPER switch



Eclipse LED8

- LED keypad
- Indication for 8 zones and 1 area
- Supports 2 programming types: by addresses and by operations
- Quick buttons for all arming modes
- 3 fast button combinations for sending of PANIC, MEDICAL and FIRE alarm
- Adjustable intensity of backlight for the buttons
- Adjustable buzzer volume
- Bidirectional TAMPER switch



Eclipse PR

- Proximity card reader
- Arming/Disarming and alarm clearing in many areas by means of proximity cards
- Sensitive buttons for Full Arm and Full Disarm
- Sensitive buttons for special arming/disarming Modes A and B, programmed from the panel
- Indication of system arming mode (Full Arm, Disarm, Mode A, Mode B)
- Indication of card status (valid and not valid card)
- Audible signalling
- One output (100mA OC or Relay)
- One zone input

Eclipse

Expander Modules



Eclipse VD

- Voice Dialer
- Plug-in card to the panel's PSTN
- Up to 8 phone numbers for voice reporting
- Remote arm/disarm, output control, system status checking guided by voice
- Multilingual support
- Easy language update (languages are stored on micro SD card)



Eclipse Zone 8

- Zone expander
- Connection directly to the system bus
- 8 additional zone inputs with freely programmable parameters
- Additional PGM output, 100mA, OC type (open collector)
- Direct mounting in the Eclipse 32 panel's box
- Stand-alone mounting in small universal plastic box SB-U



Eclipse PGM 8

- PGM expander
- Connection directly to the system bus
- 8 additional programmable outputs with freely programmable parameters, 100mA, OC type (open collector)
- Direct mounting in the Eclipse 32 panel's box
- Stand-alone mounting in small universal plastic box SB-U



Eclipse Zone 8 PS

- Zone expander with independent power supply
- Connection directly to the system bus
- 8 additional zone inputs with freely programmable parameters
- Additional PGM output, 100mA, OC type (open collector)
- Mounting in a big universal plastic box PB-U*

** Note: In the kit of the supplied equipment is included only the module's PCB. The module's operation requires an external power supply 230 VAC, a transformer unit 17V/17VA and a back-up battery 12V/7Ah.*



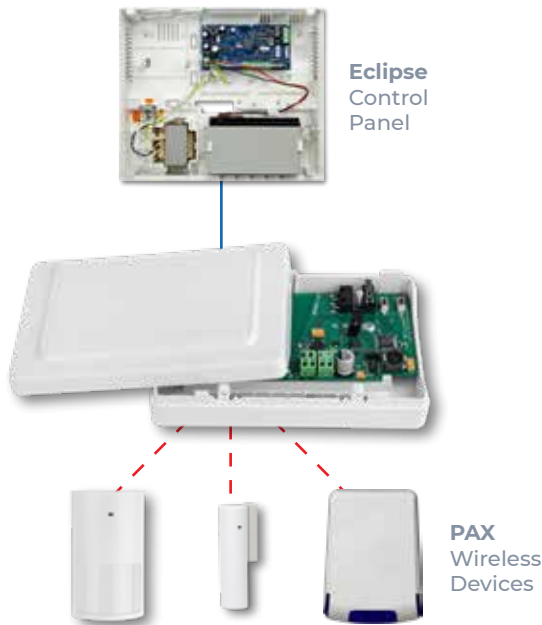
Eclipse PGM 8 PS

- PGM expander with independent power supply
- Connection directly to the system bus
- 8 additional programmable outputs with freely programmable parameters, 100mA, OC type (open collector)
- Mounting in a big universal plastic box PB-U*

** Note: In the kit of the supplied equipment is included only the module's PCB. The module's operation requires an external power supply 230 VAC, a transformer unit 17V/17VA and a back-up battery 12V/7Ah.*

PAX WL

Expander Module for Hybrid Solution with Eclipse Control Panels



PAX WL is a wireless expander module designed for building of hybrid systems with Eclipse series wired control panels and PAX series wireless devices.

PAX WL module is supplied mounted in a small plastic box suitable for wall mounting. Optionally, the module's PCB can be mounted directly into the enclosure box of the Eclipse control panel.

PAX WL is connected to the system bus of the Eclipse panel and it is added to the system configuration like other Eclipse modules.

Technical Specifications

Operation frequency:	~ 868MHz
Communication type:	Bi-directional
Protocol type:	Beacon+
Radio distance (open space):	up to 1500m
Power supply from the panel:	9-18VDC
Consumption:	
- Typical	15mA
- Maximal	20mA
Operating temperature range:	from 0°C to +40°C
Enclosure box:	ABS plastic, white
Dimensions:	126x80x32mm

Features

- Up to 32 wireless PAX devices*
- Up to 99 PAX remote key fobs*
- Up to 4 PAX WL Expander modules connected to an Eclipse control panel
- 2 anti-sabotage tamper switches
- 45° connection terminals for easy cable installation
- LED indication for current status and wireless communication
- Beacon+ protocol type for wireless communication

** Note: To a single PAX WL Expander module. The maximal number of devices and control key fobs depends on the type of the Eclipse panel.*

Communication Modules



TTE LAN

- Indication for the network status and the status of the connection with the control panel
- Remote programming and control via AJAX SP PRO/Home ProTTEct (iOS/Android) application
- Micro USB port for configuration with ProSTE software
- Serial communication with ECLIPSE series control panels and SIMPO addressable fire alarm panel
- 6 programmable inputs/outputs, OC type (up to 100mA each)
- Main and Backup IP for connection with AJAX SP PRO
- Supports operation with SIA-DC09 IP protocol messages
- Automatic (DHCP) or manual settings for network connection
- Jumper for restoring of the factory settings
- Suitable for home automation
- Control panel communication supervision
- Network status indicator



TTE Combo

- Compatible with control panels capable of sending Contact ID (CID)
- Control panel communication supervision
- AES 128 encryption
- Communication channels – PSTN, LAN and/or GPRS
- Main and Back-up reporting channels
- Connecting to AJAX SP PRO through IP or DNS address
- Supports operation with SIA-DC09 IP protocol messages
- LAN settings – Manual or Automatic (DHCP)
- 1 input (TAMPER), 2 outputs



TTE GPRS Standard 2G/4G

- Serial communication with Eclipse control panels
- Reversed polarity and overload protection
- Third party alarm panels connected to the inputs
- 6 programmable inputs/outputs, OC type (up to 100mA each)
- 6 telephone numbers
- SMS for system events and input activation
- CLIP and SMS Control of PGM outputs
- Voice Reporting and Voice Guiding (arming, disarming, output control)
- Connection with AJAX SP servers via IP or DNS address
- Main and back-up servers
- SIA-DC09 over IP reporting to AJAX SP
- AES 128 encryption
- Remote access via AJAX WEB and Home ProTTEct (iOS/Android) application
- Operation with SIM cards with roaming plan
- Automatic switching between mobile operators (cellular-networks) in different countries
- Micro USB port for programming
- The module is certified according the requirements of RED directive



TTE GPRS Simple 2G/4G

- Serial communication with Eclipse control panels
- 6 telephone numbers
- SMS for system events
- Voice Reporting and Voice Guiding (arming, disarming)
- Connection with up to two AJAX SP servers via IP or DNS address
- SIA-DC09 over IP reporting to AJAX SP
- AES 128 encryption
- Remote access via AJAX WEB and Home ProTTEct (iOS/Android) application
- Operation with SIM cards with roaming plan
- Automatic switching between mobile operators (cellular-networks) in different countries
- USB port for programming
- The module is certified according the requirements of RED directive

Wireless Solutions

The wireless systems are the best option for small installations, such as: houses, small shops or apartments. Teletek Electronics JSC develops a range of wireless panels and devices to cover the needs of the users for higher security with minimum installation costs, without need of addition cable running or hardware installations.

The BRAVO Next wireless system usually takes under 30 minutes for a complete installation and setup. The installer can easily add wireless devices to the configuration by using the panel button interface, or through ProsTE configuration software. The entire system configuration could be done via ProsTE software.

Our wireless system supports operation with PAX series wireless devices, which provide improved performance and modern design. The communication between the panel and the devices is quick, stable, reliable and it is designed according to the requirements of the EN50131 standard and the RED directive. The Beacon+ protocol allows a constant communication between the wireless devices and the Bravo Next panel, . works in the 868Mhz band and it has an adaptive frequency algorithm, which helps for the stability of the system.

The protocol supports 6 backup radio channels, so in case of signal jamming the system would switch the radio channel automatically in order to keep the communication going.

The protocol improves the communication range between the devices and the panel to the impressive 1500 meters in an open area. However, Beacon+ is not only strong and quick, but it is also energy efficient, as it improves the battery life of the device to up to 8 years for some devices.





Bravo Next – communication freedom

The Bravo Next panel uses a modular approach regarding the communication devices. It supports two slots for additional modules, which could be used depending on the needs of the installation.

Bravo module range includes – GPRS module (with voice and SMS functions), LAN module, Standard PSTN line module (with voice function), as well as MIO module (input/output).



Incorporate wired devices with the wireless system

The Bravo MIO (input/output) module provides the option to integrate standard wired detectors into the wireless Bravo Next system. The module provides 4 hardwire zones that could be used for that purpose. The installer could select amongst 5 different zone balancing diagrams, depending on his needs. Together with the wired zones, the module also provides 6 wired outputs for controlling end devices, or for connection with a third-party communication module (or a radio transmitter).



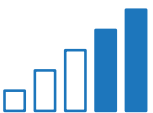
Protect yourself at all time

Little known fact is that more than 50% of the robberies occurs while people are at home, sleeping during the night. This is a risk not only for our properties and possessions, but for our life as well. One of the most underestimated functionalities of our systems is the partial arming function. Our Bravo Next panel allows the users to easily setup a partial arming algorithm, which gives them the option to protect a certain part of the system while they are home, or to leave some parts unprotected purposefully while they are gone.



Rolling Shutter option

The wireless magnetic contact PAX MC2, provides an additional wired input, which supports rolling shutter function. The installer may use the input to connect a roller shutter in combination with the wireless magnetic contact. The input balancing and working mode can be easily set by the installer, depending on the needs and the specifics of the installation.



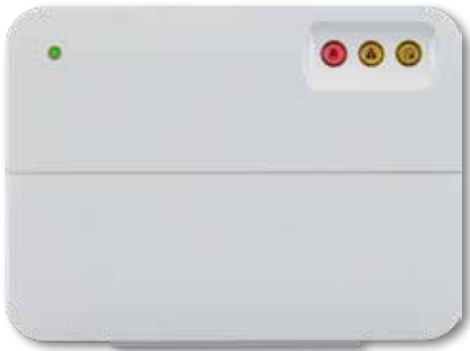
Signal coverage test

One of the greatest challenges, when building a wireless system, is the wireless signal coverage. This is very important for the stability of the system and a bad signal coverage may cost a lot of issues. That is why one of the great benefits of our PAX devices is the improved signal strength test. There are many different materials used in the construction of the buildings that can affect the wireless signal, but sometimes even small objects could cause troubles. Each PAX device supports the signal coverage test, so we strongly suggest all the installer to use it before installing the devices. The installer can easily check if the signal is good, medium or bad, and may change the position respectively.

BRAVO Next

Wireless Alarm Control Panels

EN62368-1
EN50131



- Wireless intruder alarm control panel for installations in residential houses and small offices
- Remote control and monitoring via Home ProTTEct (iOS/Android) application
- Models with internal and external power supply
- Easy and quick installation with a few simple settings at the beginning
- The wireless configuration can be changes at any time with minimal efforts from the user

Technical Specifications

Main power supply: - BRAVO Next EXT - BRAVO Next INTR	Adapter AC-DC, 5VDC/1A 230VAC +10%/-15%
Back-up battery:	Li-Po type; 1x3.7 V/4100mAh
Max. back-up battery size:	80x65x10mm
Operating temperature range (indoor):	from -10°C to +40°C, Class II
Relative humidity:	93%@+30°C
Enclosure box:	ABS plastic, white
Dimensions:	220x160x38mm

BRAVO Next EXT part number

Wireless alarm panel with external power supply - AC-DC power adapter included in the purchased equipment - **31040086**

BRAVO Next INTR part number

Wireless alarm panel with internal power supply - built-in impulse power supply unit - **31040087**

Features

Operation frequency:	868MHz-869MHz Adaptive frequency agility algorithm
Protocol type:	Beacon+
Radio distance (open space):	up to 1500m
Type of indication:	LED
Areas:	1
Max. zones/ detectors:	16 (including PIR, MC, FL, FD)
Max. remote controls:	8 (including RC, Panic button, KBD)
Max. sirens:	2; 115dB
Built-in sounder:	85dB
Signal coding:	✓
Memory LOG:	300 events
Programming:	ProsTE software
Communication, optional:	GPRS, LAN, PSTN (VD), MIO, MOUT
Color:	White

Wireless

Detectors



PAX PIR

- Digital PIR detector
- Coverage angle 90°
- Low voltage threshold 2.6V
- 54 Detection zones
- Automatic temperature compensation
- PET 10kg
- Radio distance (open space) - up to 1500m
- Battery: 1x3V/1500mAh, CR123A type
- ~ 6 years battery life
- EMC Immunity EN 50130-4
- Optional wall/ceiling installation bracket



PAX 2PIR/AM

- Outdoor dual PIR detector
- IP55, IK08
- Antimasking option
- Coverage angle 100°
- Detection distance 12m
- Automatic temperature compensation
- PET 20kg/80cm
- Radio distance (open space) - up to 1500m
- Batteries: 2x3V/1500mAh, CR123A type
- ~ 4 years battery life
- Optional slide-in installation bracket



PAX 3Tech/AM

- Outdoor combined dual PIR and Microwave detector
- IP55, IK08
- Antimasking option
- Microwave sensor 24GHz
- Coverage angle 100°
- Detection distance 12m
- Automatic temperature compensation
- PET 20kg/80cm
- Radio distance (open space) - up to 1500m
- Batteries: 2x3V/1500mAh, CR123A type
- ~ 3 years battery life
- Optional slide-in installation bracket

Wireless

Detectors



PAX MC1

- Magnetic contact detector
- 1 Hardware zone input for connecting wired detector
- 2 Reed switches
- Operation distance 10-24mm
- Radio distance (open space) - up to 1500m
- Front cover and rear (anti-tear) tamper
- Battery: 1x3V/1500mAh, CR123A type
- ~ 8 years battery life



PAX MC2

- Magnetic contact detector
- 1 Hardware zone input for connecting wired detector
- 1 Hardware zone input for connecting roller shutter detector
- 2 Reed switches
- Operation distance 10-24mm
- Radio distance (open space) - up to 1500m
- Front cover and rear (anti-tear) tamper
- Battery: 1x3V/1500mAh, CR123A type
- ~ 8 years battery life



PAX FL

- Flood detector
- 24-hour alarm zone for prevention of flooding
- Radio distance (open space) - up to 1500m
- Front cover and rear (anti-tear) tamper
- Battery: 1x3V/1500mAh, CR123A type
- ~ 7 years battery life



PAX FD

- Combined optical-smoke and heat detector
- Class A1/R according EN 54-5
- Rate-of-rise heat part, 10°C/min (max 60°C)
- Optical chamber auto compensation
- Batteries: 2x3V/1500mAh, CR123A type
- ~ 4 years battery life

Wireless

Control and Signalling Devices



PAX KBD

- LED indication keypad with compact design
- System status, faults and memory indication
- Backlight of the buttons activated via proximity sensor
- Bracket for easy wall mounting
- Programming menus for user codes, changing date and time, etc.
- Operating temperature -20°C to +55°C
- Batteries: 2x3V, CR123A type
- ~ 1.5 years battery life



PAX RC

- 4-button key fob remote control
- Radio distance (open space area) - 600m
- Functions: Arm, Disarm
- Two buttons with programmable functionality
- Battery: 1x3V/600mAh, CR2450 type
- ~ 4 years battery life



PAX Panic

- 1-button key fob for sending panic alarm
- EMC Immunity EN 50130-4
- Lanyard, included
- Battery: 1x3V/190mAh, CR2032 type
- ~ 4 years battery life



PAX SR INTR

- Piezo indoor siren
- Acoustic pressure: 102dB/1m
- Front cover and rear (anti-tear) tamper
- Tone frequency range 2700-3300Hz
- EMC Immunity EN 50130-4:2011+A1:2014
- Battery pack: 4x3V, Lithium, size "A"
- ~ 7 years battery life
- Operating temperature -10°C to +40°C



PAX SR EXT

- Piezo outdoor siren
- Acoustic pressure: 102dB/1m
- Bidirectional tamper
- Blue LED flash
- Internal metal cover
- Battery pack: 4x3V, Lithium, size "A"
- ~ 7 years battery life
- Operating temperature -30°C to +65°C
- IP54 for electronics
- IP45 for the enclosure box

Wireless

Communication Modules



BRAVO TTE GPRS/GPRS VG

- GPRS Communication module
 - 4 telephone numbers for sending SMS messages for events
 - Built-in mounting in BRAVO Next panel
 - 2 GB micro SD card (BRAVO TTE GPRS VG)
 - Voice Reporting and Voice Guiding (arming, disarming, output control)
 - Push Notification messages for events to user via AJAX SP
 - SIA-DC09 over IP reporting to AJAX SP
 - Remote control and management via Home ProTTEct (iOS/Android) application
-



BRAVO LAN

- LAN Communication module
 - Built-in mounting in BRAVO Next panel
 - Remote control and management via Home ProTTEct (iOS/Android) application
 - Remote programming of BRAVO wireless panel via AJAX WEB user interface
 - Push Notification messages for events to user via AJAX SP
 - LAN settings – Manual or Automatic (DHCP)
-



BRAVO PSTN/PSTN VG

- PSTN Communication module
 - Voice reporting (BRAVO PSTN VG)
 - Built-in mounting in BRAVO Next panel
 - 2 GB micro SD card (BRAVO PSTN VG)
 - 4 Phone numbers for sending messages for events to monitoring station (via CID or SIA protocol) or to User (via User protocol)
-



BRAVO MIO

- Communication module with inputs and outputs
- 4 inputs for wired hardware zone connection
- Two operation modes for the outputs according the application:
 - “MOUT” - For connection of external communication devices and connection of a wired siren
 - “PGM” - 6 outputs, suitable for management via Home ProTTEct application, OC type, 100mA
- Built-in mounting in BRAVO Next panel

Software

Every intruder alarm system must be strictly observed and maintained after installation. Teletek Electronics JSC helps the engineers, maintenance technicians and security companies providing some special designed software application tools for monitoring, programming and management.

The designed tools are compatible with our whole range of intruder alarm panels and also provides adding extra features as real-time video surveillance on site; instant push notifications for events; remote controlling of the security and devices, etc.

The whole range of software applications and tools are regularly updated with new features and improved for better operation by the users.



Software

Security

AJAX SP



AJAX SP

TTE Cloud service is a comprehensive network solution for maximum reliability of every security system. Appropriate for use by monitoring centres and end users alike.

Features

- AJAX SP - CD Software Pack; Based on OS Windows Server; Administrator and WEB User application.
- Online web based application
- Receives signals from GPRS/ LAN Teletek Electronics communication modules installed at monitored sites
- Online monitoring and status information of alarm systems connected to the AJAX SP
- Integrated video verification with third-party video systems
- Transfers messages via LAN or RS232 to monitoring software with SURGARD MLR2 protocol
- Full remote programming of Teletek Electronics control panels and modules
- Remote Arm/Disarm/Bypass/Output control/LOG file view
- Push notification messages for events to user
- 1 main IP address and 1 backup IP address
- Up to 10 000 modules
- High speed data transmission, protected via 128bit AES encryption algorithm
- Based on OS Windows Server 2012

Recommended PC configuration for installation of AJAX SP:

- CPU 4 core 2 GHz
- 1 TB disk place
- 16 GB RAM
- 128 MB Video Card
- CD-ROM
- 2xEthernet interface
- COM port



AJAX SP Station

- AJAX SP in hardware version
- All features and characteristics of AJAX SP apply
- 1 main IP address and 1 back-up IP address
- No additional hardware needed
- No installation needed
- Two Ethernet cards
- 2 COM ports

Software

Monitoring & Management

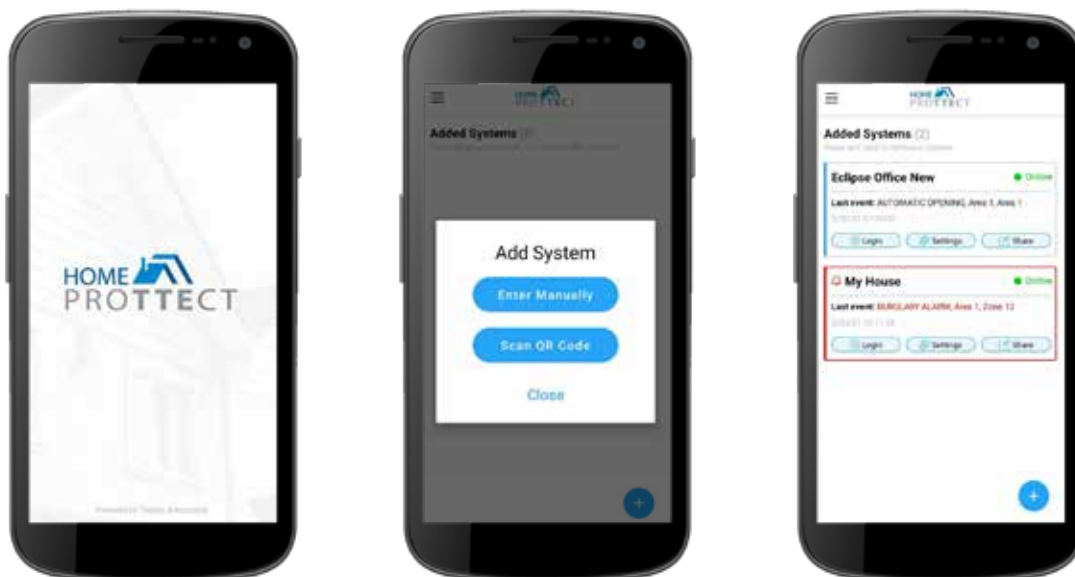


Home ProTECT

Home ProTECT is mobile application for management and monitoring of all the intruder alarm systems manufactured by Teletek Electronics: ECLIPSE and BRAVO series. The application is native, developed for both Android and iOS, in accordance to the latest requirements of both platforms. In order to connect your system to the Home ProTECT application, it must be registered to the Ajax SP Server. The application is free for both Android and iOS users.

Features

- Remote System control – user can Arm and Disarm his system/s remotely
- Multi-system control – the application can manage multiple systems
- System status indication – the user can see the last event and the alarm status in the system list of the application
- The application supports two methods for adding new system:
 - Manual – by entering your user credentials manually
 - By scanning a QR code – the code is generated by the Ajax SP Server (Cloud)
- System sharing – a user can share his system by generating a QR code through the Home ProTECT application, so another user can add this system as well.
- Partial arming – the user can also set the system in two different partial arm states – Stay or Sleep Arm
- Detector management – the user can manage(enable/disable) the detectors/zones of the system when needed
- Push notifications – Home ProTECT sends notification in case of any event in the system
- Special alarm tone – the application supports a special sound signal for the Alarm events
- Alarm snooze algorithm – the Alarm notification sound will be automatically repeated, in case the notification is not confirmed by the user



Software

Programming

ProTE

ProTE Programming Software

ProTE is a software package for programming of Teletek Electronics intruder and fire alarm panels.

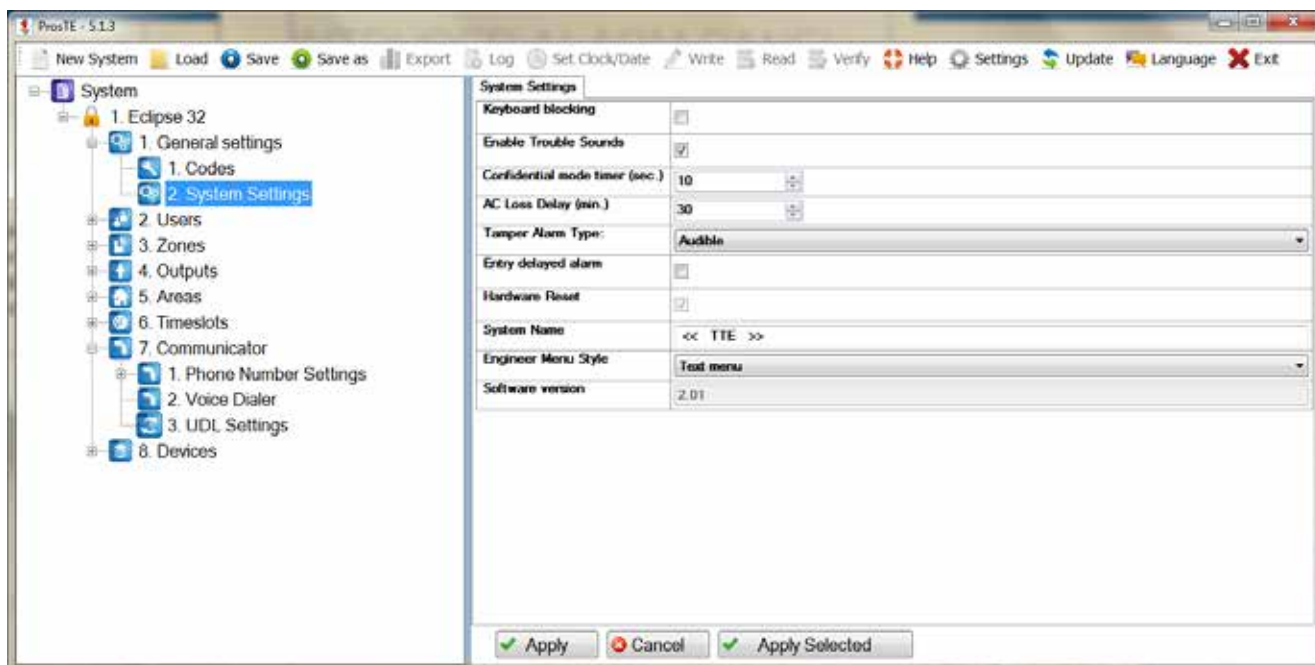
The software allows fast and user-friendly programming.

Features

- Intuitive and user friendly graphic interface
- Easy programming of all system parameters
- Saves time and effort
- Allows creation of default configurations in TDF (Teletek data files) ready for use on site
- Decreases possibility for mistakes during programming
- No need to remember addresses or use programming manuals
- Download and update available at www.teletek-electronics.com
- Multi language support

Supported Products

- Eclipse 8+/16/32/99
- BRAVO Next Wireless panel
- IRIS
- iRIS4
- iRIS8
- SIMPO
- IRIS/SIMPO Repeater
- TTE GPRS Standard
- TTE GPRS Simple
- TTE LAN
- TTE Combo
- TP2000 (ver. 8.xx)



ProsTE Cable Kit

Special cable kit for programming of Teletek Electronics' panels and modules:

- Cable converter USB to RS232
- Interface cable to RS232

Software

Monitoring

GUARD VIEW

Guard View

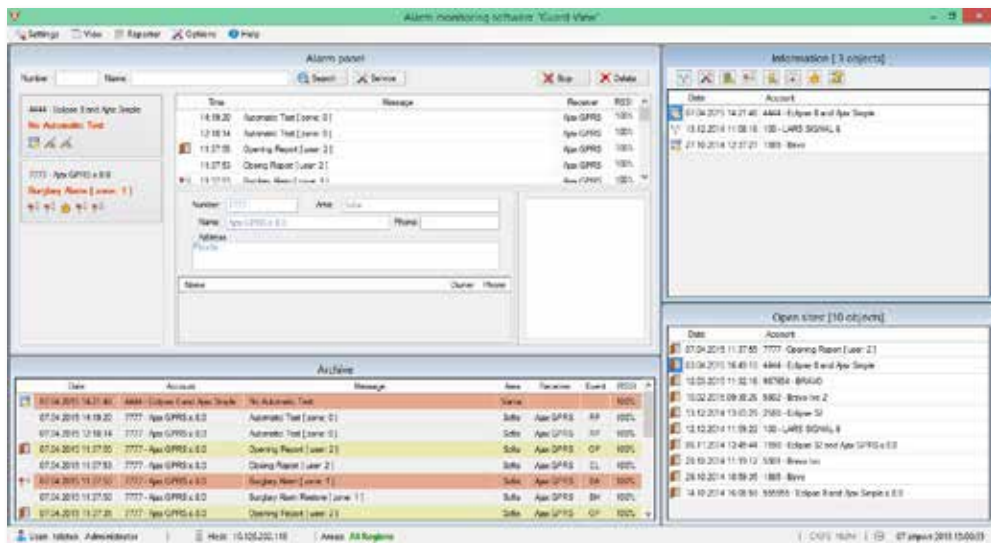
Guard View is designed to serve companies acting in the field of monitoring of objects by centralized monitoring systems.
Compatible with LRR 8000 and AJAX SP.

Features

- Compatible with most of the popular alarm receivers and alarm protocols: LARS, Electronics Line, SIA, Ademco Contact ID
- MySQL database - SQL server for maintenance of the relational database with local and net clients
- Compatible with OS Windows - 32/64 bit's version with installed .NET Framework 4
- Alarm monitoring window for ensuring operator's activity
- Manager window for organizing the work regarding entering and updating the information about the protected objects as well as creating reports from the incoming signals in the archive
- Driver programs for receiving signals from COM and LAN ports
- Test program simulating signals from the protected objects in the database

Advantages

- Detailed information for all incoming messages
- Log in with different accounts – Operators, Managers, Administrator
- Complete file for every site with address, contact person, location details, picture of site, instructions for monitoring station staff
- Additional windows for filtered messages
- File for site in alarm
- Flexible database administration
- Up to 10 000 sites management
- Detailed reports for received messages
- Sending SMS messages to Users



Detection & Signalling

Our PIR detectors range are designed to give extremely stable long-range detection performance in a variety of indoor/outdoor residential and home, commercial and industrial applications. With clear and compact design latest dual technologies Teletek Electronics JSC detectors are with ultra low false alarm rate.

The detection area covers 90° in front of the sensor up to a maximum distance of 12 meters. Thanks to PET immunity function all detectors PIRIN and TITAN series are able to accept the presence of pets up to 40 kg (depends of the model) without generating burglary alarm in the premises.

The siren is an essential component of any burglary alarm system. The indoor and outdoor sirens produced by Teletek Electronics JSC have visual and audible announcing for alerting that someone is trying to break into your home or business.



Detectors

PIRIN PIR Series

The key to the perfect motion detector is the balance. The balance between the stability, functionalities and simplicity.

The PIRIN detector series has it all - a wired detectors series which is a result of many years of experience in the field of intruder systems and motion detection.

Tailor made detector lens

The optical lens that the PIRIN detector used is specially design to serve the purposes of the range. The shape of the lens is semi-spherical, which provides a greater coverage angle. The special form of the lens allows the detectors to cover the area just under the detector - Creep Zone protection. This are is the most vulnerable spot for the most PIR motion detectors. With Creep zone functionality the PIRIN detectors are one step ahead of the intruders.



One-of-a-kind sensitivity adjustment

Probably the greatest benefit of PIRIN DL detector is the improved 7 level sensitivity adjustment. This feature allows the installer to set a precise working mode for the detector, depending on the specifics of the installation. The user can adjust the sensitivity by using a jumper combination on the detector board and can select amongst 7 different levels.

Most competitors are just limiting the range of the PIR sensor, while in our case the PIRIN detector has a special software algorithm to adjust the sensitivity, which makes the feature unique.

Built-in EOLs

Zone balancing is very important for the security of the installation, however, it also takes a lot of time. In order to save precious time for the installers, our PIRIN detectors are equipped with built-in end of line resistances. The installer can use jumpers to set the required wiring diagram for the detector, without the need of having additional resistances with him.

Our EOL resistance selection is enough to cover all the wiring diagrams of our Eclipse panels, but also a lot of the diagrams used by many competitors.

Outdoor application models

The wired PIRIN detectors series includes also a range of special models with increased IP rating designed for outdoor mounting. The detectors are offered with optional antimasking functionality and two separate PIR elements used for achieving of maximum efficiency in detecting of movement in open spaces. The operation of outdoor PIR detector PIRIN 3Tech/AM is based on a triple technology solution - integration of 2 separate PIR elements and a microwave sensor all mounted in common enclosure box. The possibility for individual sensitivity setting of every of the PIR elements and the MW sensor is an important option for achieving the optimal security on the protected site.

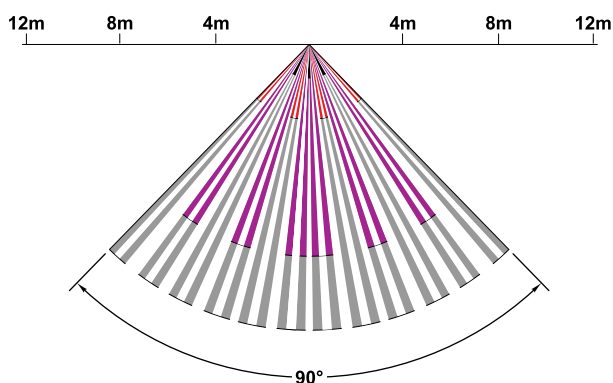


Detectors

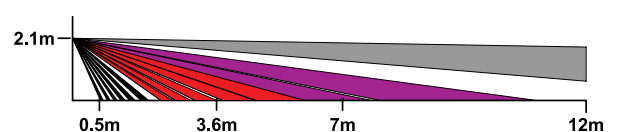
PIRIN PIR Series for indoor mounting

	PIRIN DL	PIRIN MW	PIRIN MW AM
Algorithm	Digital	Digital	Digital
Anti Masking	✘	✘	✓
Range	0.5-12m	PIR: 0.5-12m; MW: 0-15m	PIR: 0.5-12m; MW: 0-15m
Creep Zone	✓	✓	✓
PIR Sensitivity	High/Auto	High/Auto	High/Auto
Additional PIR Sensitivity	7 levels	✘	✘
MW Sensitivity	✘	With Trimmer, Frame Recognition	With Trimmer, Frame Recognition
MW Frequency	✘	24.125 GHz (K-Band)	24.125 GHz (K-Band)
Built-in EOLs	✓	✓	✓
Temperature compensation	Digital bidirectional	Digital bidirectional	Digital bidirectional
RF Immunity	10 V/m; 80MHz -6GHz	10 V/m; 80MHz -6GHz	10 V/m; 80MHz -6GHz
PET Immunity	12/20kg (selectable)	15kg (for PIR part)	15kg (for PIR part)
Walk Detection speed	0.3-3 m/s	0.3-3 m/s	0.3-3 m/s
Operating temperature	-15°C ÷ +50 °C	-15°C ÷ +50 °C	-15°C ÷ +50 °C
Viewing angle	90°	90°	90°
LED for Status Indication	1 LED	3 LEDs-PIR, MW, ALARM	3 LEDs-PIR, MW, ALARM
OptoMOS output	✓	✓	✓
Operating voltage	9 - 18V DC	9 - 18V DC	9 - 18V DC
Consumption	<15mA	<15mA	<15mA

Lens Pattern - top view



Lens Pattern - side view



Pet immunity



PIRIN DL (PET - 12/20kg)
PIRIN MW (PET - 15kg)
PIRIN MW AM (PET - 15kg)

Detectors

PIRIN Series



PIRIN DL

- PIR detector with semi-spherical lens
- 71 Detection zones
- Creep zone protection, mechanically enabled/disabled
- 7 sensitivity levels (selectable)
- Built-in EOL resistors selecting the type of zone balancing, set via jumpers
- Suitable for application in high class buildings - bank offices, storehouses, etc.
- Compact and slim design
- GRADE 2, Class II, INCERT certified



PIRIN MW

- Dual Technology (PIR+MW) detector with semi-spherical lens
- Function "Triple Knock" - maximum protection against false alarms
- Sensitive adjustment - MW and PIR
- 71 Detection zones
- Tamper for protection of box opening and anti-tear tamper on the back
- Creep zone protection, mechanically enabled/disabled
- Built-in EOL resistors selecting the type of zone balancing, set via jumpers
- GRADE 2, Class II, INCERT certified



PIRIN MW AM

- Dual Technology (PIR+MW) detector with semi-spherical lens
- AntiMasking and AntiSpray functions
- Function "Triple Knock" - maximum protection against false alarms
- Sensitive adjustment - MW and PIR
- 71 Detection zones
- Tamper for protection of box opening and anti-tear tamper on the back
- Creep zone protection, mechanically enabled/disabled
- Built-in EOL resistors selecting the type of zone balancing, set via jumpers



Mounting Bracket

- Mounting bracket for detectors PIRIN DL, PIRIN MW, PIRIN MW AM
- Suitable for wall and ceiling mounting
- Designed according the requirements of GRADE 3
- Built-in tamper switch against unauthorized dismantling
- Hidden cables inside the bracket body
- Vertical adjustment range: 0°-8° upside; 0°-24° downside (8° step)
- Horizontal adjustment range: 90°

Detectors

PIRIN PIR Series for outdoor mounting

	PIRIN 2PIR/AM	PIRIN 3Tech/AM
Algorithm	Digital	Digital
Anti Masking	✓	✓
Number of the PIR elements	2	2
Range	3-12m	PIR: 3-12m
PIR Sensitivity	With Trimmer, 30% (min) - 100% (max)	With Trimmer, 30% (min) - 100% (max)
MW Sensitivity	-	With Trimmer, 30% (min) - 100% (max)
MW Frequency	-	24 GHz (K-Band)
Built-in EOLs	✓	✓
Temperature compensation	Digital bidirectional	Digital bidirectional
PET Immunity	10kg	10kg (for the PIR part)
Protection rating	IP54/IK08	IP54/IK08
Operating temperature	-20°C ÷ +60°C	-20°C ÷ +60°C
Detection angle (radial aperture)	110°	110° (PIR), 90° (MW)
LED for Status Indication	3 LEDs – PIR1, PIR2, Alarm	3 LEDs – PIR1, PIR2, MW/Alarm
OptoMOS outputs	2	2
Operating voltage	8 - 14V DC	8 - 14V DC
Consumption	<15mA	<15mA
Installation height	1200-2200mm	1200-2200mm
Warm-up time (initial initialization)	~ 2 min	~ 2 min
Material	Enclosure - ABS with UV protection; Mounting plate - aluminium alloy	Enclosure - ABS with UV protection; Mounting plate - aluminium alloy

Detectors

PIRIN Series



PIRIN 2PIR/AM

- Motion PIR detector based on dual technology
- 2 PIR elements
- Outdoor mounting
- IP54, IK08
- AntiMasking option
- Detection angle (radial aperture) - 110°
- Detection range - up to 12m
- Automatic temperate compensation
- Immunity for pets up to 10kg
- Separate settings for the sensitivity and the detection range for every of the PIR elements
- Hard ABS plastic enclosure with UV protection
- Metal mounting plate for quick installation on wall surface



PIRIN 3Tech/AM

- Motion PIR detector based on triple technology
- 2 PIR elements and a microwave sensor
- Outdoor mounting
- IP54, IK08
- AntiMasking option
- Microwave sensor 24 GHz
- Detection angle (radial aperture) - 110° (PIR), 90° (MW)
- Detection range - up to 12m
- Automatic temperate compensation
- Immunity for pets up to 10kg
- Separate settings for the sensitivity and the detection range for every of the PIR elements
- Separate setting for the sensitivity of the microwave sensor
- Hard ABS plastic enclosure with UV protection
- Metal mounting plate for quick installation on wall surface

Detectors

TITAN PIR Series



The TITAN Series detectors come with 5-year warranty.

TITAN Series is a range of high quality PIR detectors suitable for medium to high risk commercial and residential applications where security cannot be compromised.

The TITAN PIR detector range has minimum 12kg PET Immunity option for each type. TITAN series detectors are equipped with very precise cylindrical lens which guarantees stable and reliable detection.



Dual technology detectors assure extremely high level of protection with supreme quality. For excellent performance in detection, we combine Microwave and Glass Break with PIR technology providing flexibility for professionals. Anti Masking and Anti Spray options are provided for TITAN MW AM.

As an option the detector can come with bracket for wall and ceiling mounting. Two adjustment stages ensure detector horizontal pivot and tilt adjustment.

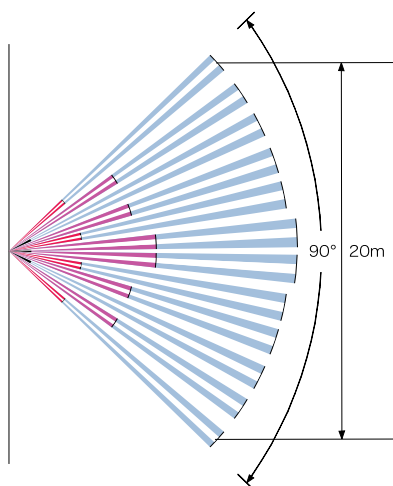


Detectors

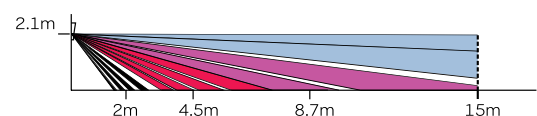
TITAN PIR Series

	TITAN AG	TITAN DL	TITAN QD 40
Algorithm	Analogue	Digital	Digital
Filtering	Analogue	Digital + Analogue	Digital + Analogue
Range	1.5-15m	1.5-15m	1.5-15m
Temperature compensation	✓	Digital bidirectional	Digital bidirectional
RF Immunity	10 V/m; 80 - 2000 MHz	10 V/m; 80 - 2000 MHz	10 V/m; 80 - 2000 MHz
PET Immunity	Up to 12kg	12/20kg (selectable)	25/40kg (selectable)
Detection speed	0.2-3.5 m/s	0.2-3.5 m/s	0.2-3.5 m/s
Operating temperature	-20°C ÷ +50 °C	-20°C ÷ +50 °C	-20°C ÷ +50 °C
White light immunity	6500lux	4000lux	6500lux
Sensitivity adjustment	1 pulse and auto	1 pulse and auto	1 pulse and 2 pulses (PET)
Viewing angle	90°	90°	90°
Indication On/Off	LED	LED	LED
OptoMOS output	✓	✓	✓
Operating voltage	9 - 18V DC	9 - 18V DC	9 - 18V DC
Consumption	<12mA	<14mA	<14mA




Lens Pattern - top view



Lens Pattern - side view



Pet immunity

-  TITAN AG (PET - 12kg)
-  TITAN DL (PET - 12/20kg)
-  TITAN QD 40 (PET - 25/40kg)

Detectors

TITAN Series



TITAN AG

- PIR detector with cylindrical lens
- Coverage angle 90°
- Coverage area up to 15m
- 54 Detection zones
- Temperature compensation
- High white light immunity up to 6500Lux
- PET immunity: small animals up to 12kg
- Reverse polarity protection



TITAN DL

- PIR detector with cylindrical lens
- Digital processing algorithm
- Suitable for application in high class buildings - bank offices, storehouses, etc.
- Digital bidirectional temperature compensation
- Coverage angle 90°
- Coverage area up to 15m
- 54 Detection zones
- White light immunity up to 4000Lux
- PET immunity: small animals 12/20kg (selectable)
- Reverse polarity protection
- Option - 7 sensitivity levels (selectable)



TITAN QD 40

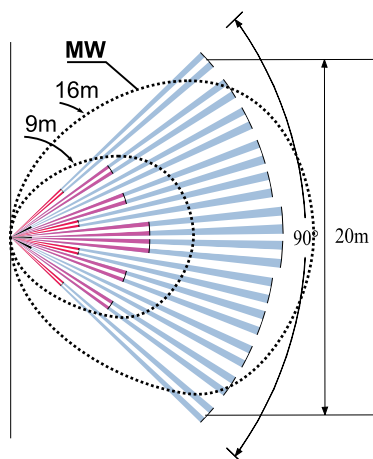
- PIR detector with cylindrical lens
- PET immunity up to 25/40kg (selectable)
- Coverage angle 90°
- Coverage area up to 15m
- 54 Detection zones
- Digital bidirectional temperature compensation
- Excellent white light immunity up to 6500Lux
- Reverse polarity protection

Detectors

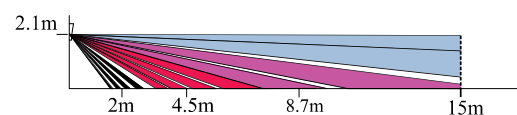
TITAN PIR Series Dual Technology

	TITAN MW	TITAN MW AM	TITAN GB
EN Grade certified	2, Class II	3, Class II	×
Algorithm	Digital	Digital	Analogue
Anti Masking	×	✓	×
Range	PIR: 1.5-15m MW: 5-15m	PIR: 1.5-15m MW: 5-15m	PIR: 1.5-15m GB: up to 15m
PIR Sensitivity	Maximum or Auto	Maximum or Auto	1 Pulse or Auto
PIR Detection Speed	0.2 m/s - 3.5m/s	0.2 m/s - 3.5m/s	0.3 m/s - 3.0m/s
MW Sensitivity	With Trimmer, Frame Recognition	With Trimmer, Frame Recognition	×
MW Frequency	10.525 GHz (X-Band)	10.525 GHz (X-Band)	×
GB Frequency	×	×	5 - 10 kHz
Functions	×	×	Frequency and Amplification
Outputs	OptoMOS Relay	OptoMOS Relay	OptoMOS Relays - Separately
White Light Immunity	4000lux	4000lux	6500lux
Operating Temperature	-20°C ÷ +50°C	-20°C ÷ +50°C	-20°C ÷ +50°C
LED for Status Indication	3 LEDs-PIR, MW, ALARM	3 LEDs-PIR, MW, ALARM	✓
Consumption Standby/Alarm, max	23/46mA@12V DC	23/46mA@12V DC	17/32mA@12V DC
Operating Voltage	9 -18V DC	9 -18V DC	9 -18V DC

Lens Pattern - top view



Lens Pattern - side view



Pet immunity



TITAN MW (PET - 12kg)
TITAN GB (PET - 12kg)

Detectors

TITAN Series



TITAN MW

- Dual Technology (PIR+MW) detector
- Digital Analysis
- Cylindrical lens
- Function "Triple Knock" - maximum protection against false alarms
- White light immunity up to 4000Lux
- PET Immunity up to 12kg (for the PIR part only)
- Sensitive adjustment - MW and PIR
- Reverse polarity protection
- TITAN MW is EN50131 GRADE2 Class II certified



TITAN MW AM

- Dual Technology (PIR+MW) detector
- Digital Analysis
- Cylindrical lens
- Function "Triple Knock" - maximum protection against false alarms
- AntiMasking and AntiSpray functions
- Self-test function - a continuous assessment for operation of MW or PIR sensors. If any of the sensors is defective, the FAULT relay is activated.
- White light immunity up to 4000Lux
- Sensitive adjustment - MW, AM and PIR
- Reverse polarity protection
- TITAN MW AM is EN50131 GRADE3 Class II certified



TITAN GB

- Dual Technology (PIR + GBD glass break) detector
- Pulse count adjustment PIR and GBD
- Frequency adjustment - GBD
- Excellent white light immunity up to 6500Lux
- PET Immunity up to 12kg (for the PIR part only)
- Auto temperature compensation
- Reverse polarity protection



Mounting Bracket

- Bracket for TITAN Series detectors
- Suitable for wall and ceiling mounting

Detectors

Fire Alarm for Intruder Systems



SensoMAG F10 INTR

- Fixed temperature fire alarm detector with relay base
- Digital process algorithm
- Detects temperature over 60°C, class* A2/S
- LED indication with 360° visibility
- Low profile design
- Low current consumption
- Compatible with deep base accessory DeepBase W



SensoMAG R20 INTR

- Rate-of-rise temperature fire alarm detector with relay base
- Digital process algorithm
- Detects temperatures above 58°C, class* A1/R
- LED indication with 360° visibility
- Low profile design
- Low current consumption
- Compatible with deep base accessory DeepBase W



SensoMAG S30 INTR

- Optical-smoke fire alarm detector with relay base
- Digital process algorithm
- Automatic drift compensation
- LED indication with 360° visibility
- Gasket ring for additional protection to the smoke chamber against dust and dirt
- Low profile design
- Low current consumption
- Compatible with deep base accessory DeepBase W



SensoMAG M40 INTR

- Combined optical-smoke and rate-of-rise fire alarm detector with relay base
- Class* A1/R
- Digital process algorithm
- Automatic drift compensation
- LED indication with 360° visibility
- Gasket ring for additional protection to the smoke chamber against dust and dirt
- Low profile design
- Low current consumption
- Compatible with deep base accessory DeepBase W



Deep Base W

- Deep base accessory
- Color - white (RAL 9016)
- Application for mounting on rough surfaces, pipelines, floating ceilings, etc
- Compatible with SensoMAG INTR detectors



Wet Base

- Waterproof deep base accessory
- Compatible for mounting with SensoMAG INTR fire alarm detector series
- Color - white (RAL 9016)
- For mounting into difficult and harsh environments, and areas with high humidity
- IP42

* Category, according EN 54-5:2017+A1:2018

Detectors

Fire Alarm for Intruder Systems



SensoMAG F10A Relay

- Fixed heat detector with built-in relay 80mA
- Detects temperatures over 60°C, class* A2/S
- Digital processing algorithm
- LED indication with 360° visibility
- Sensor status indication on every 8 seconds



SensoMAG F10B Relay

- Fixed heat detector with built-in relay 80mA
- Detects temperatures over 75°C, class* B/S
- Digital processing algorithm
- LED indication with 360° visibility
- Sensor status indication on every 8 seconds



SensoMAG R20 Relay

- Rate-of-rise heat detector with built-in relay 80mA
- Detects temperatures above 58°C, class* A1/R
- Digital processing algorithm
- LED indication with 360° visibility
- Sensor status indication on every 8 seconds



SensoMAG S30 Relay

- Optical-smoke detector with built-in relay 80mA
- Auto drift compensation
- Digital processing algorithm
- LED indication with 360° visibility
- Sensor status indication on every 8 seconds
- Rubber gasket ring for increased protection of the smoke chamber



SensoMAG M40 Relay

- Combined detector with built-in relay 80mA, class* A1/R
- Auto drift compensation
- Digital processing algorithm
- LED indication with 360° visibility
- Sensor status indication on every 8 seconds
- Rubber gasket ring for increased protection of the smoke chamber



SensoMAG B24 and SensoMAG B24-HP

- Standard 24V bases for SensoMAG detectors
- Compatible with fire panels with alarm state current up to 15mA
- SensoMAG B24 base is with low profile design (dimensions 102x18mm)
- SensoMAG B24-HP base is with high profile design and it is suitable for mounting on rough surfaces (dimensions 103x25mm)

* Category, according EN 54-5:2017+A1:2018

Sounders

Intruder Systems



SR 50

- Indoor siren
- Sound output - 102dB/1m
- Piezo speaker
- Blue flash
- Plastic enclosure



SR 110

- Indoor siren
- Sound output - 105dB/1m
- Piezo speaker
- Plastic enclosure
- Tamper



SR 200

- Outdoor siren with IP54 and IK08 protection
- Selectable sound output - 95dB/1m; 117dB/1m
- Electromagnetic speaker
- Plastic housing with inner metal cover
- Built-in tamper and LED flash
- Internal metal housing
- Built-in lever bubble for correct mounting
- Double tamper (screw and wall)



SR 300B

- Outdoor siren
- Selectable sound output - 85dB/1m; 105dB/1m
- Piezo speaker
- Plastic housing with inner metal cover
- IK08 and IP54 protection
- Built-in tamper and spirit level
- Built-in NiMH battery, 9V/180mAh
- Flat cover for company sticker or logo
- Blue flash



SR 3000

- Outdoor siren
- Selectable sound output - 85dB/1m; 105dB/1m
- Piezo speaker
- Plastic housing with inner metal cover
- Built-in tamper and spirit level
- Connectors for accumulator 1x12V/2.1Ah
- Flat cover for company sticker or logo
- Orange flash



SR 400

- Outdoor siren
- Selectable sound output - 85dB/1m; 105dB/1m
- Piezo speaker
- IK08 and IP45 protection
- Built-in tamper and spirit level
- Built-in NiMH battery, 9V/1100mAh
- Flat cover for company sticker or logo
- Blue flash
- SR400 is EN50131 GRADE3 Class IV certified

Accessories

Intruder Alarm Systems



GBD 10

- Glass break detector
- Analogue analysis
- Adjustable sensitivity
- Adjustable frequency range
- Sensitive to sounds between 2 and 10kHz



GBD 20

- Glass break detector
- Digital frequency analysis
- Detection of 4 different types of glass
- Pattern recognition technology
- Automatic sensitivity adjustment
- False alarm immunity
- Operating range from 1 to 7 meters
- Coverage area - 180°



GB Tester

- Assists the selection of appropriate place for glass break detector installation
- Two starting modes - automatic and manual
- Four types of glass break tests



AUMS-12S

- Magnetic contacts for door or window use
- Surface mounting with screws of twin adhesive tape
- N/O for closed loop systems
- Contact distance up to 20 - 25mm
- Lead wires length - 400mm



MDU Kit

- Universal remote control module with operating frequency 433MHz
- Transmitting distance 50-100m
- Two independent channels
- Selectable latch or pulse operation mode for each channel
- 2 built-in power relays
- Two remote control units in the set
- Up to 100 remote key fobs



MDU-V

- Remote control module with transmitter
- Rolling code
- One channel
- Up to 15 transmitters
- LED indication for relay output
- 4 programmable operation modes



PS12XX

- Power supply unit
- PS1210 - 12VDC, 1A
- PS1230 - 12VDC, 3A
- Plastic box
- Transformer



PB-U

- Universal plastic box
- Suitable for ECLIPSE ZONE 8 PS, ECLIPSE PGM 8 PS
- Built-in bidirectional tamper switch
- ABS plastic

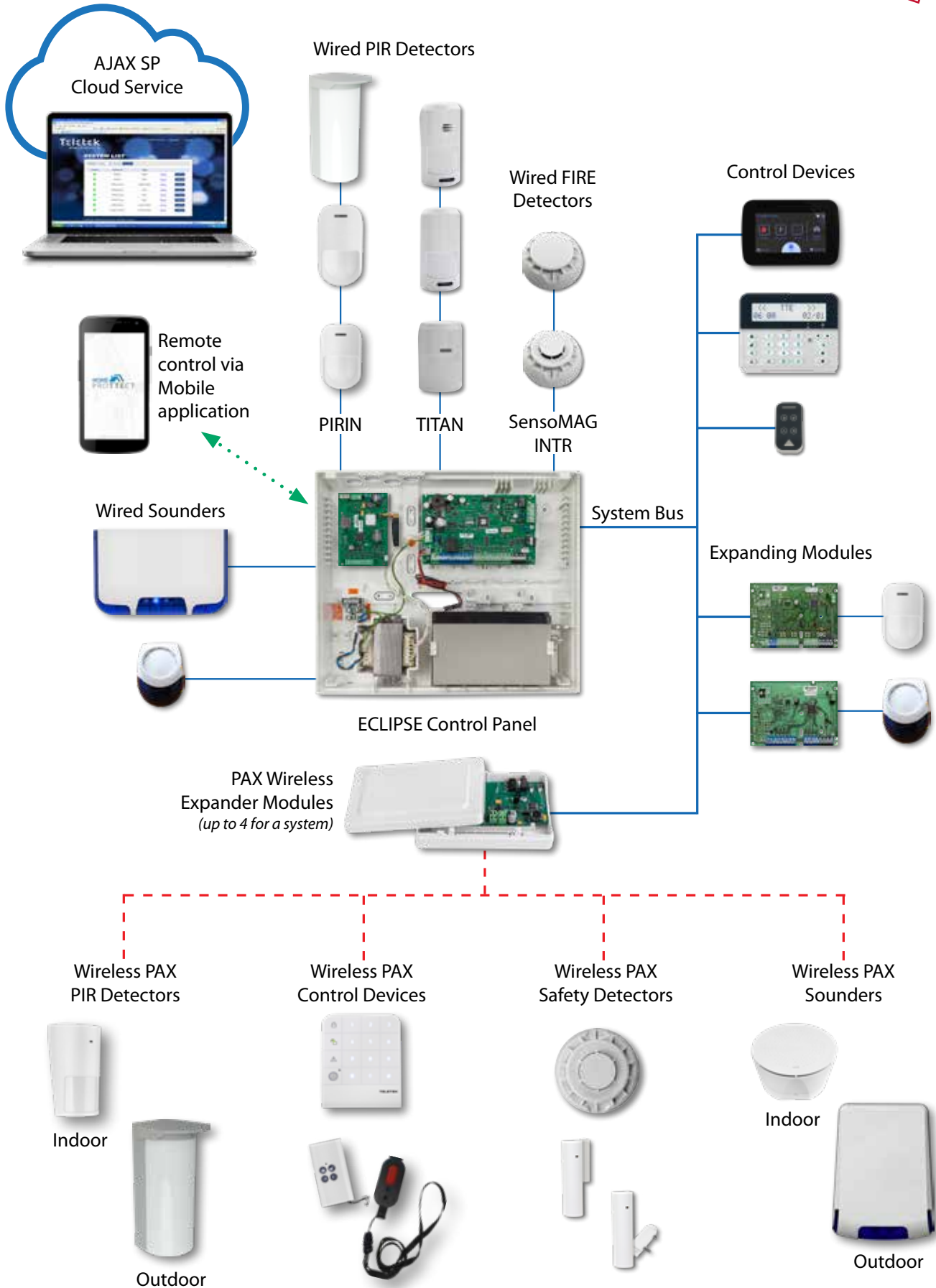


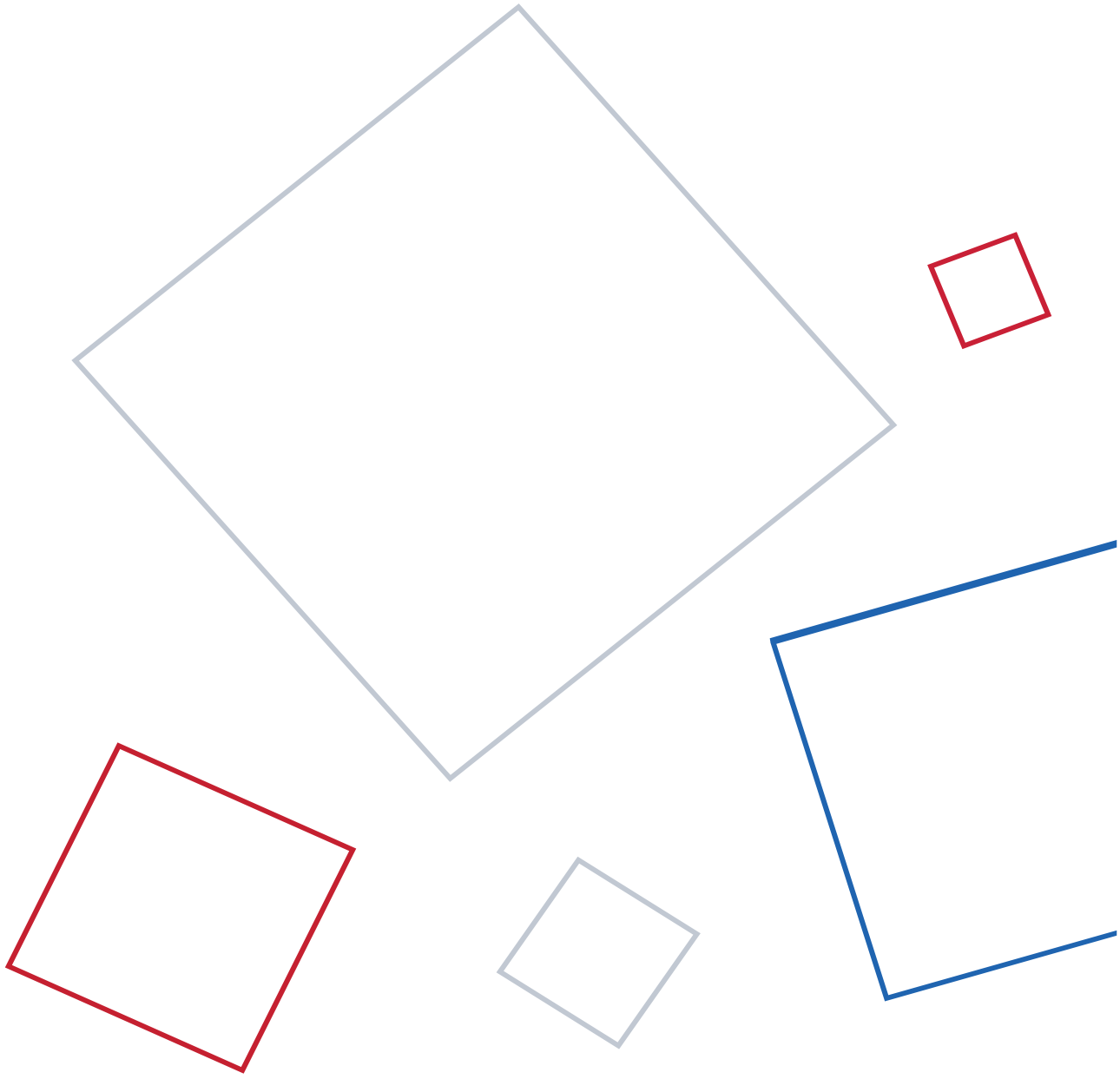
SB-U

- Suitable for TTE GPRS Standard, TTE GPRS Simple, TTE LAN, TTE Combo, ECLIPSE ZONE8, ECLIPSE PGM8
- Built-in bidirectional tamper switch
- ABS plastic
- Optional variant with transparent cover

Eclipse & PAX

Hybrid Solution System Architecture





TELETEK

www.teletek-electronics.com



02/2024