

# **ACSConfigTool User's Manual**

## **(Windows Version)**

**V1.0.0**

## Important Safeguards and Warnings

Please read the following safeguards and warnings carefully before using the product in order to avoid damages and losses.

Note:

- Do not expose the device to lampblack, steam or dust. Otherwise it may cause fire or electric shock.
- Do not install the device at position exposed to sunlight or in high temperature. Temperature rise in device may cause fire.
- Do not expose the device to humid environment. Otherwise it may cause fire.
- The device must be installed on solid and flat surface in order to guarantee safety under load and earthquake. Otherwise, it may cause device to fall off or turnover.
- Do not place the device on carpet or quilt.
- Do not block air vent of the device or ventilation around the device. Otherwise, temperature in device will rise and may cause fire.
- Do not place any object on the device.
- Do not disassemble the device without professional instruction.

Warning:

- Please use battery properly to avoid fire, explosion and other dangers.
- Please replace used battery with battery of the same type.
- Do not use power line other than the one specified. Please use it properly. Otherwise, it may cause fire or electric shock.

## Special Announcement

- This manual is for reference only.
- All the designs and software here are subject to change without prior written notice.
- All trademarks and registered trademarks are the properties of their respective owners.
- If there is any uncertainty or controversy, please refer to the final explanation of us.
- Please visit our website for more information.

# Table of Contents

1	Product Overview.....	1
2	Installation and Uninstallation.....	2
2.1	Install.....	2
2.2	Uninstall.....	4
3	Daily Operation .....	6
3.1	Login ACSConfigTool.....	6
3.2	Before Configuration.....	7
3.3	Modify IP.....	8
3.3.1	Modify IP .....	8
3.3.2	Batch Modify IP .....	9
3.4	Configure System Info .....	10
3.4.1	Time Sync .....	10
3.4.2	Reboot.....	11
3.4.3	Default.....	11
3.5	Upgrade Device.....	12
3.5.1	Single Upgrade .....	12
3.5.2	Batch Upgrade .....	14

# 1 Product Overview

ACSCConfigTool is a system tool, mainly serves access control device with the following functions

- Batch modify IP address of access control device.
- Batch remotely upgrade access control device.
- Batch sync time, reboot setup and restore default of access control device.


## 2 Installation and Uninstallation

This chapter introduces how to embed ACSConfigTool into ConfigTool or delete it from ConfigTool.

### 2.1 Install

Pre-installation Conditions:

- You have installation pack of ConfigTool and ACSConfigTool. If not, please contact after-sales for support.
- You have installed ConfigTool software. If not, please refer to *ConfigTool User's Manual*.

Step 1. Double click . System pops up login interface, see Figure 2-1.

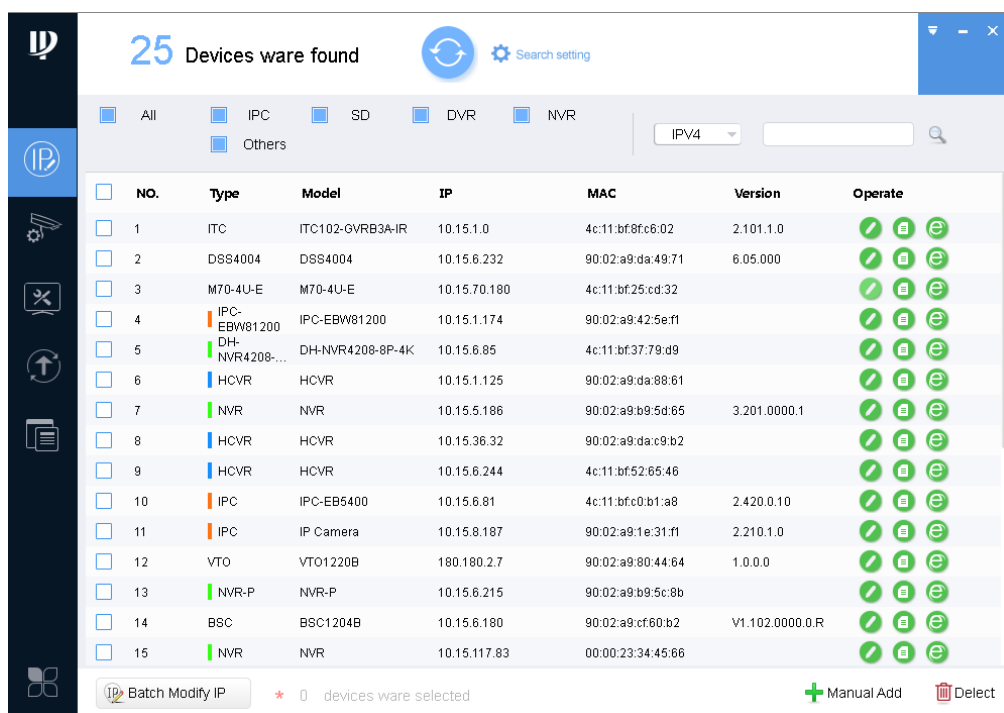


Figure 2-1

Step 2. Click . System shows Package Center, see Figure 2-2.

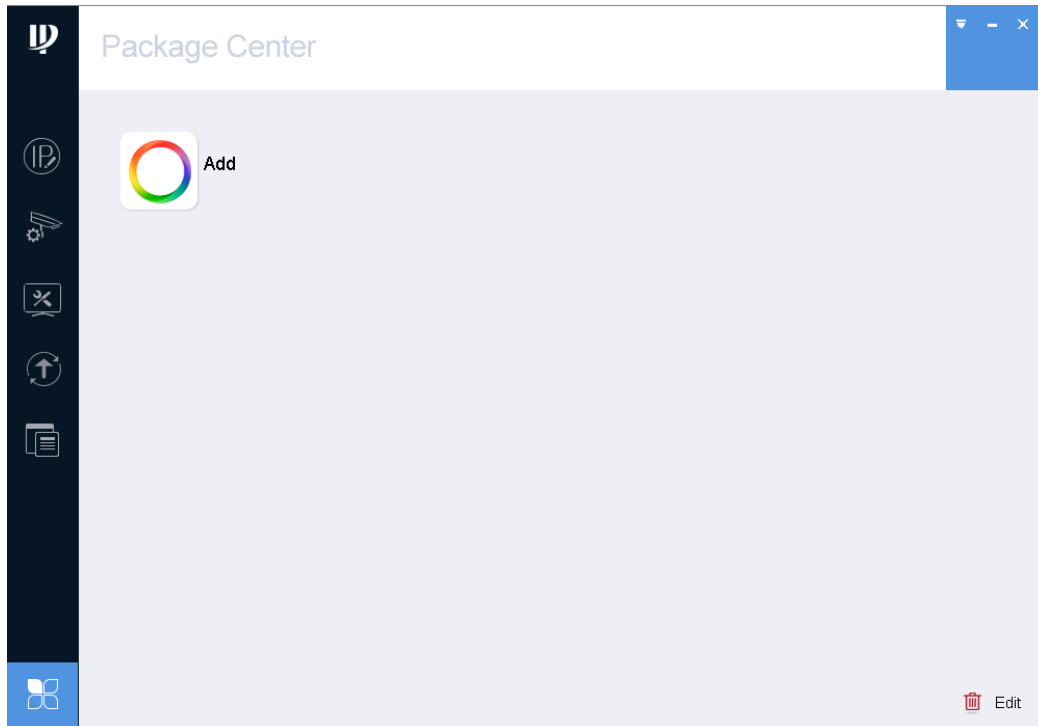


Figure 2-2

Step 3. Click Add. System shows Open interface, see Figure 2-3.

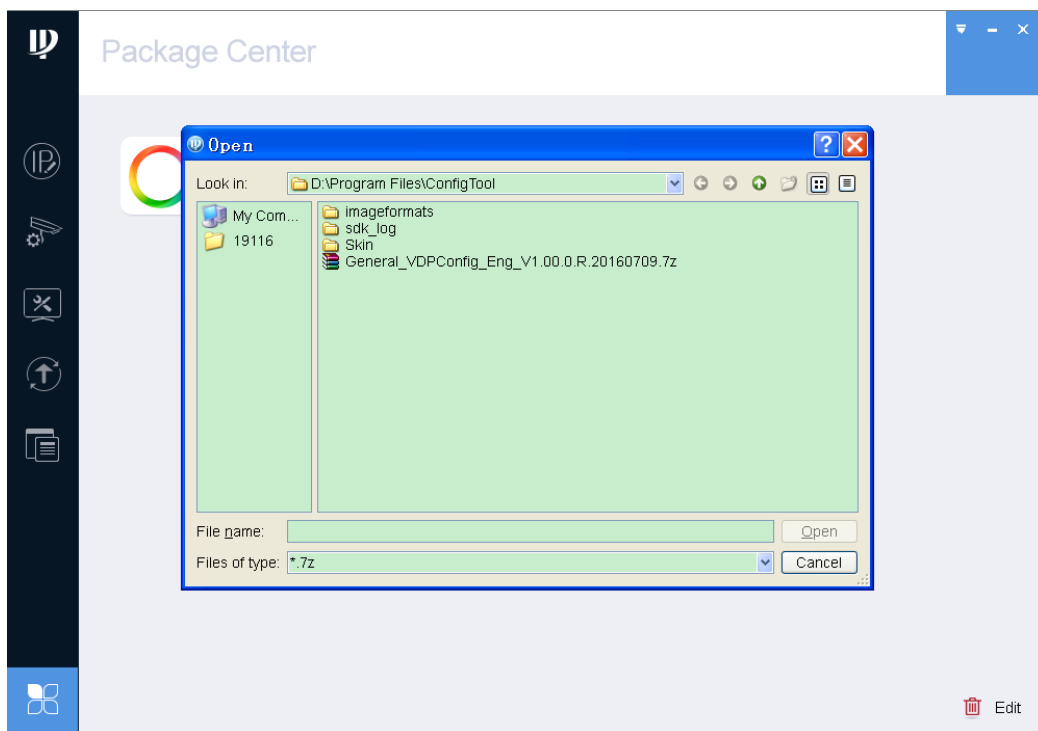


Figure 2-3

Step 4. Select file, click Open.

System prompts you to install, see Figure 2-4.

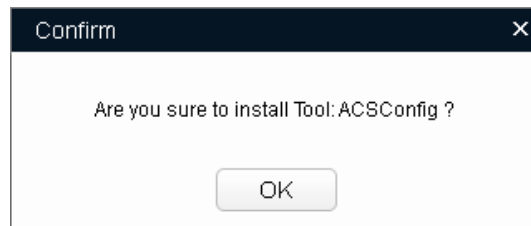


Figure 2-4

Step 5. Click OK. System starts to install App, and when installation is complete, App icon becomes colorful, see Figure 2-5.

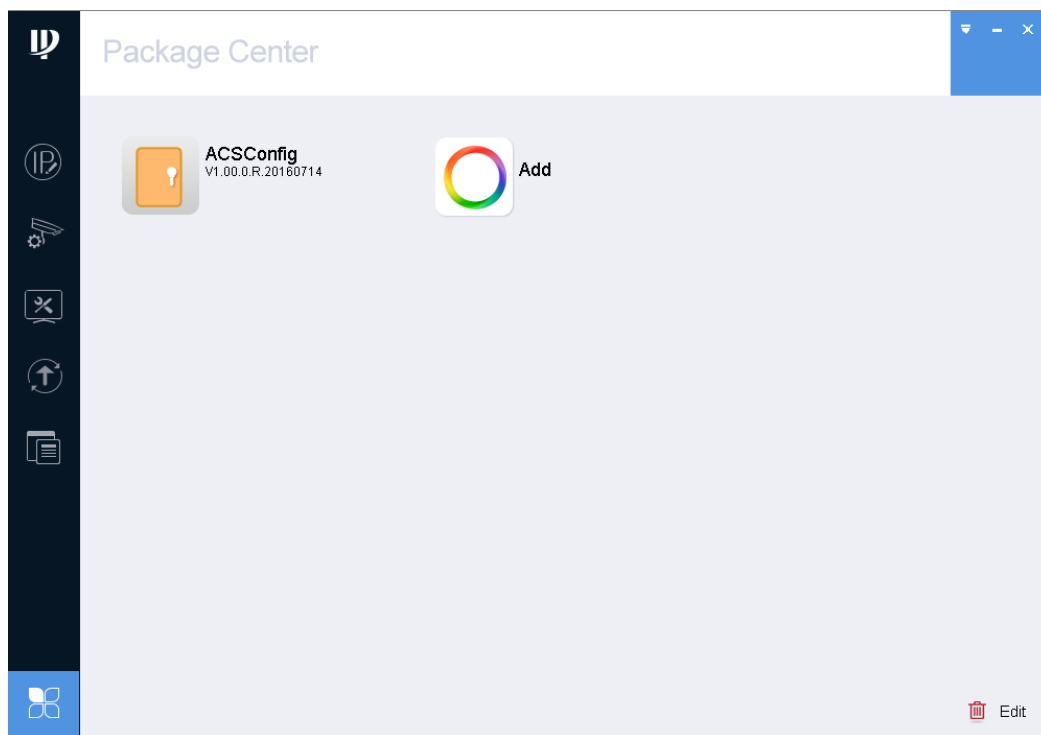



Figure 2-5

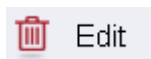
## 2.2 Uninstall




Step 1. Double click  on desktop, system shows login interface, see Figure 2-1.



Step 2. Click , system shows Package Center interface, see Figure 2-5.



Step 3. Click , system shows delete button, see Figure 2-6.

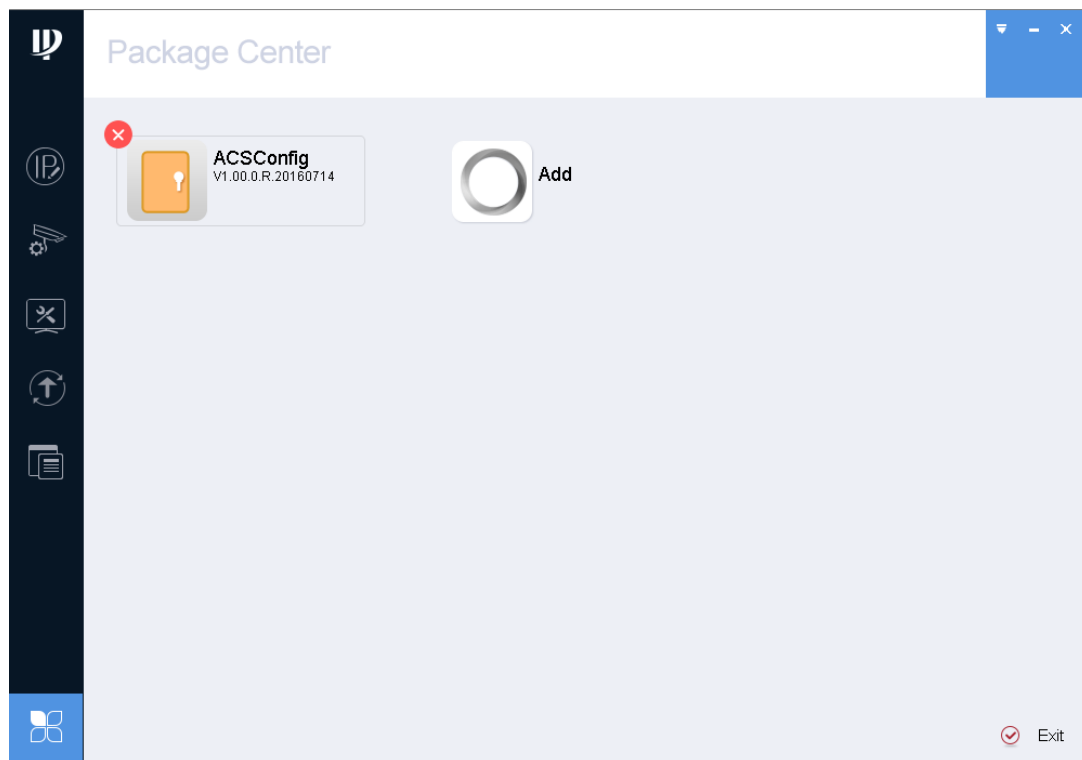


Figure 2-6

Step 4. Click , and confirm by clicking OK in the pop-up box, see Figure 2-7.

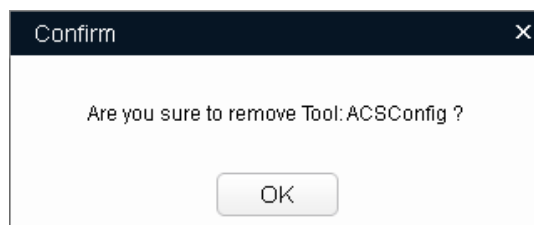


Figure 2-7



Step 5. Click OK to delete tool.




## 3 Daily Operation

### 3.1 Login ACSConfigTool

You can login ACSConfigTool via any of the following two methods:

- Unzip ACSConfigTool package, double click  **ACSConfig.exe** in the package, system shows login interface, see Figure 3-1.
- Login Cinfgitool, in Package Center, click , system shows login interface, see Figure 3-1.

**Note:**

- If there is no  in Package Center, please refer to Ch 2.1.
- Login ACSConfigTool, you can automatically search device within the same segment.

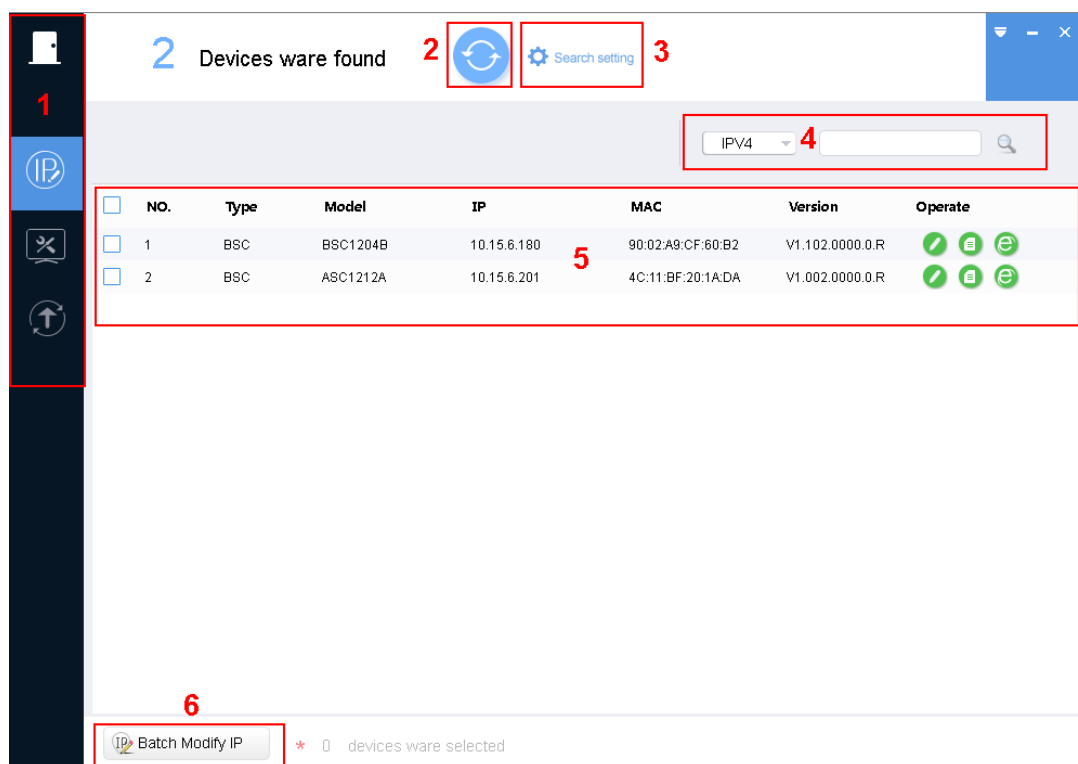


Figure 3-1

No.	Function	Description
-----	----------	-------------








1	Menu	<p>It includes the following four tabs:</p> <p>: one by one or batch modify device IP.</p> <p>: set system time, auto reboot or manually reboot, and restore default settings.</p> <p>: upgrade device one by one or as batch.</p>
2	Refresh	Search device again.
3	Search Setting	<p>Search for device by IP.</p> <p><b>Warning:</b>  <b>Before you modify IP, configure system or update device, modify “username” and “password” to be the login username and password which you used to login device.</b></p>
4	Filter	Quickly filter device (by type, IP, model, MAC address, version)
5	Device List	<p>It shows searched device and device info, including type, model, IP, MAC and version. In Operation list, click  to view device details. Click  to quickly open device WEB config interface. Click  to modify device IP.</p>
6	Batch Modify IP	Modify more than one device IP at the same time.

Chart 3-1


## 3.2 Before Configuration

- Set username and password to login username and password of the device being operated (update, modify IP and etc.).

Click  [Search setting](#), in setting interface, enter login username and password of the device being operated, click OK.

After setup is complete, the system auto searches device again.

Note:

Default username and password of system are both “admin”. If you enter wrong username or password, system will show  next to device IP when you update device, modify IP, or configure parameter.

- Refresh device info. If the device being operated is not in device list, you can refresh list.

Click , the system searched device again, and refreshes device.

- Filter device

Set filter of search (type, model, IP, MAC and version), click  to quickly find device matching filter.

## 3.3 Modify IP

You can modify a single IP or batch modify IP.

### 3.3.1 Modify IP

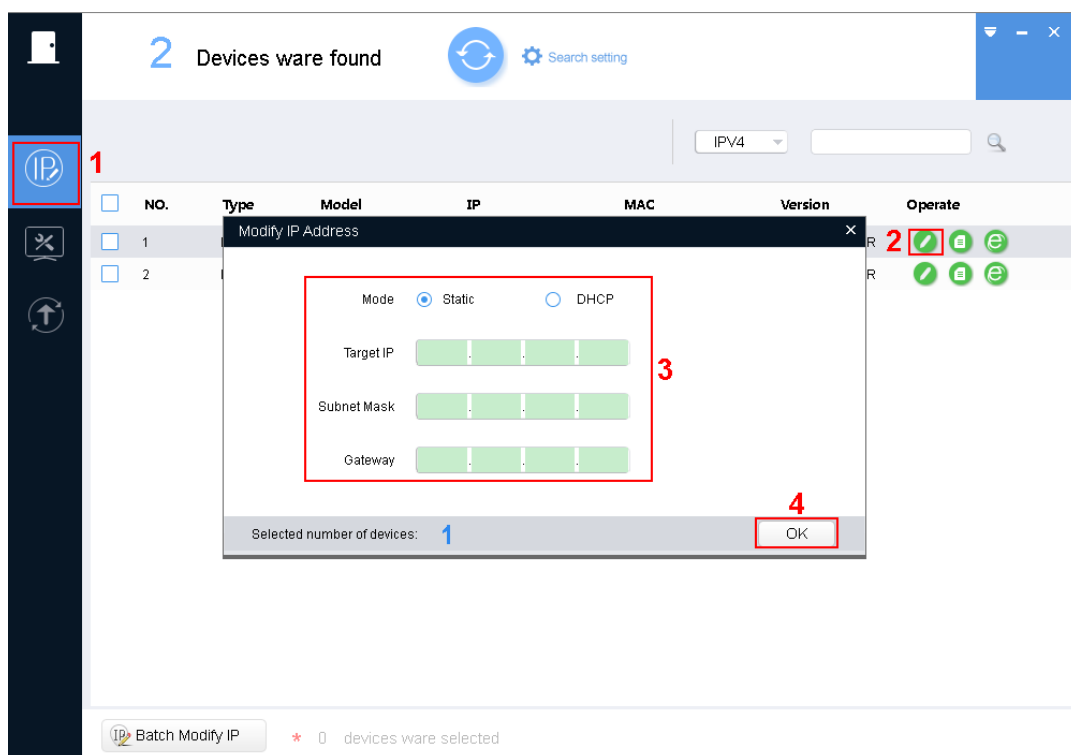



Figure 3-2

Step 1. Click .

System shows Modify IP Address interface.

Step 2. Click  of device you want to modify its IP.

Step 3. Set mode, target IP, subnet mask and gateway.

Step 4. Click OK.

### 3.3.2 Batch Modify IP

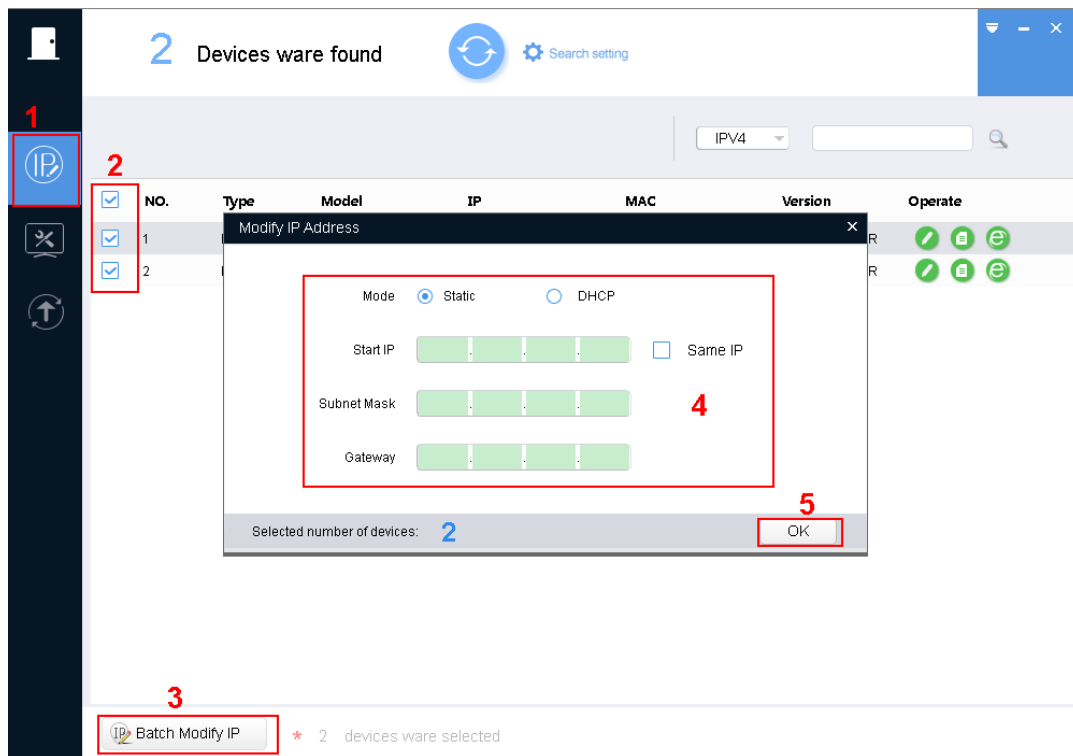



Figure 3-3

Step 1. Click  to enter batch modify IP interface.

Step 2. Select device you want to modify IP.

Step 3. Click  Batch Modify IP , system pops up Modify IP box.

Step 4. Set start IP, subnet mask and gateway.

**Note:**

**Check Same IP will set the same IP for all devices involved.**

Step 5. Click OK.

## 3.4 Configure System Info

### 3.4.1 Time Sync

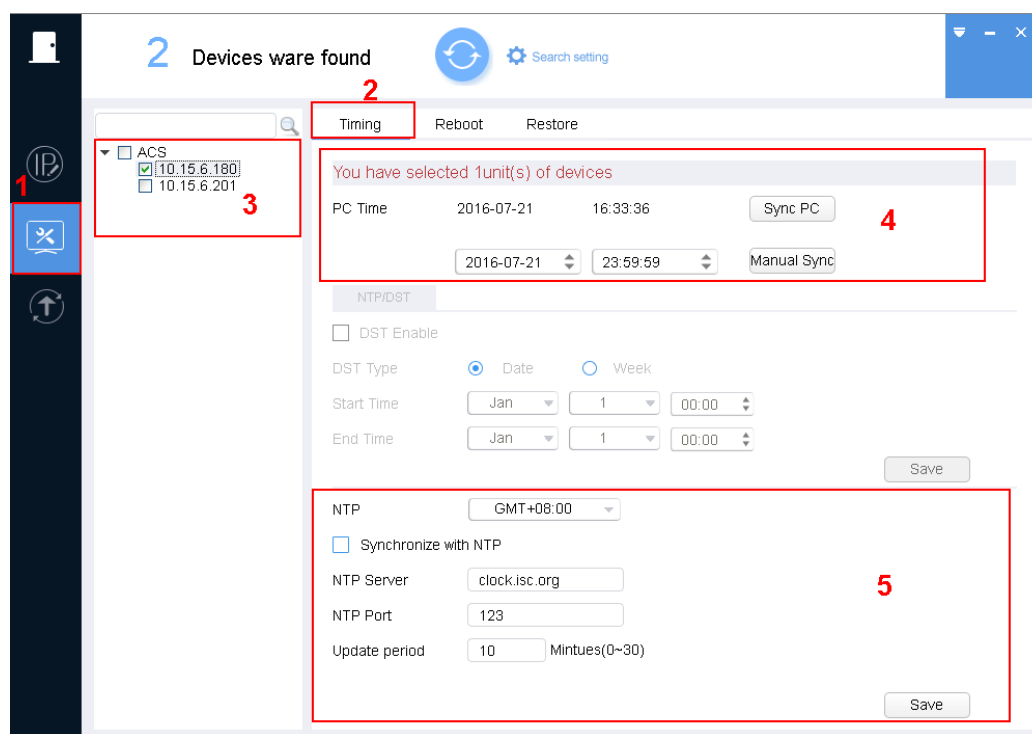



Figure 3-4

Step 1. Click , system shows system config interface.

Step 2. Click Timing tab.

Step 3. Select device.

Step 4. Set time.

You can use either of the following method to modify time.

- Enter time, click manually sync.
- Click Sync PC, to sync time with PC.
- Sync with NTP server, please refer to Chart 3-2.

Parameter	Note
Sync with NTP	Enable switch.
NTP Server	Set NTP server IP.
NTP Port	Set NTP server port.
Update Period	Interval of update.

Save	Save set NTP server info.
------	---------------------------

Chart 3-2

### 3.4.2 Reboot

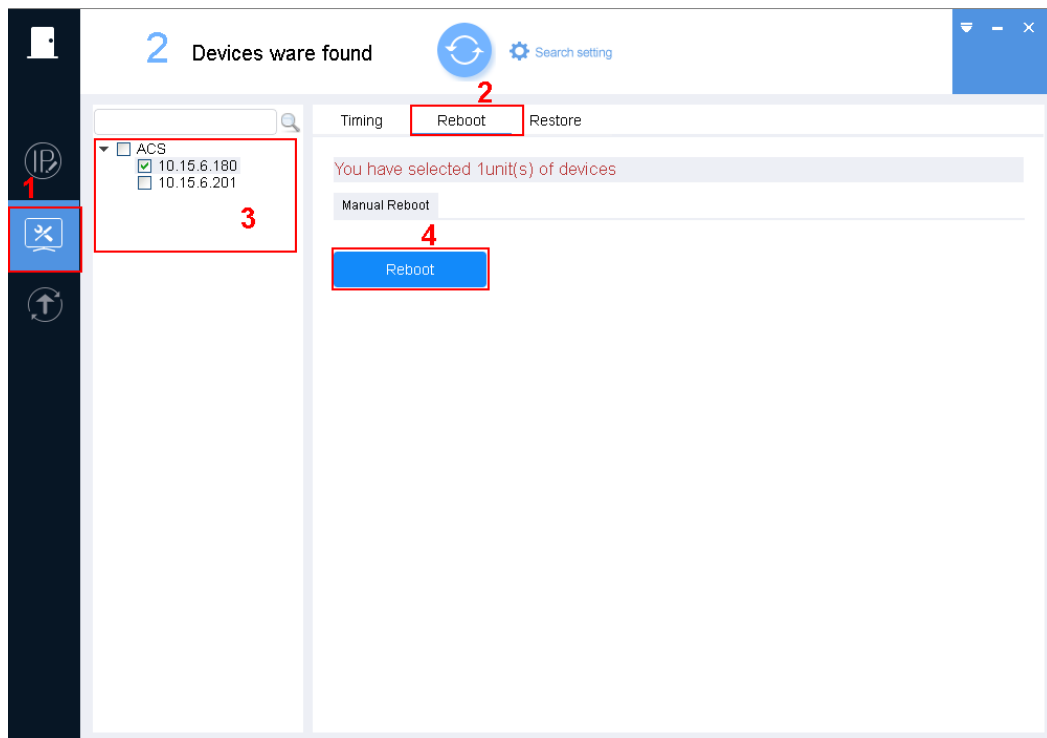



Figure 3-5

Step 1. Click , system shows system config interface.

Step 2. Click Reboot tab, system shows reboot interface.

Step 3. Select device.

Step 4. Click Reboot. Device will reboot immediately.

Note:

Reboot will cause operation interruptions, so please reboot device when operation is not frequent.

### 3.4.3 Default

Default function is to restore device network config (exclude IP), general config and etc.

Note:

For all-in-one device and multi-door controller, their IP are restored to default by this function.

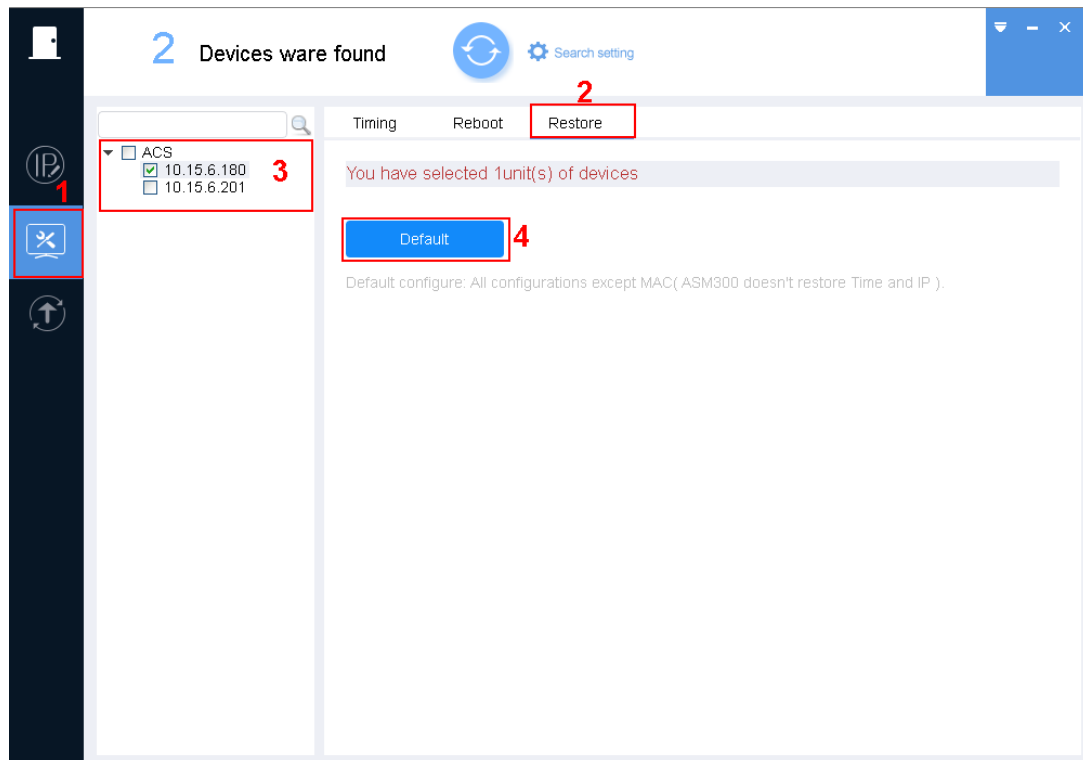



Figure 3-6

- Step 1. Click , system shows system config interface.
- Step 2. Click Restore tab, system shows Restore interface.
- Step 3. Select device.
- Step 4. Click Default.

## 3.5 Upgrade Device

ACSConfigTool supports to upgrade one device and upgrade multiple devices.

### 3.5.1 Single Upgrade

- Step 1. Click , system shows upgrade interface, see Figure 3-7.

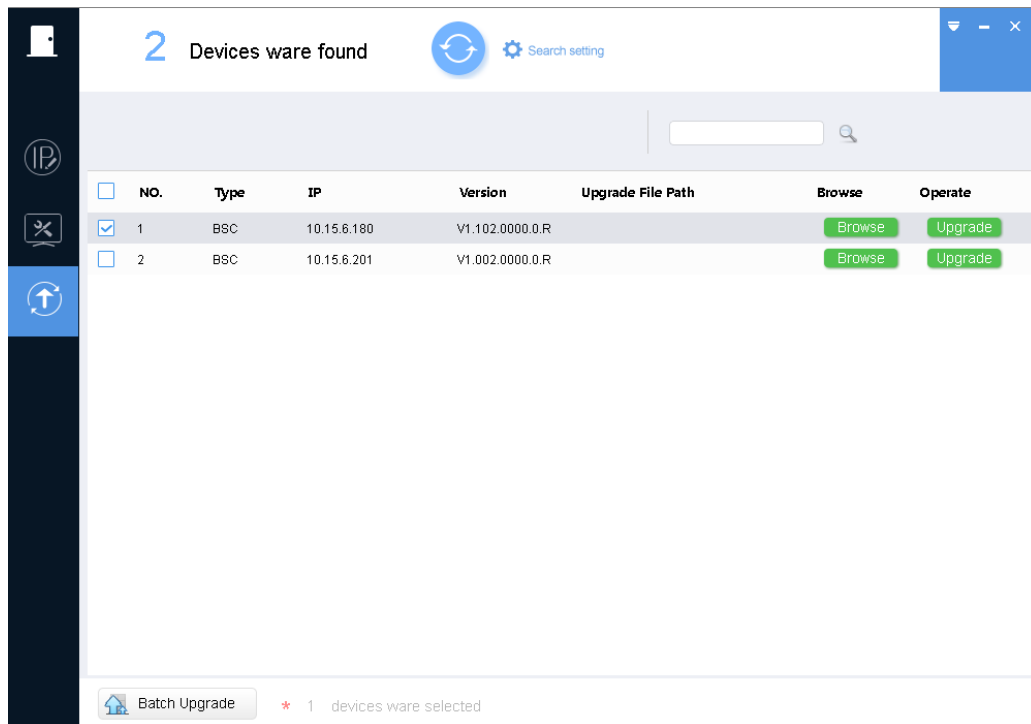


Figure 3-7

Step 2. Click a device you want to upgrade, select upgrade file, see Figure 3-8.

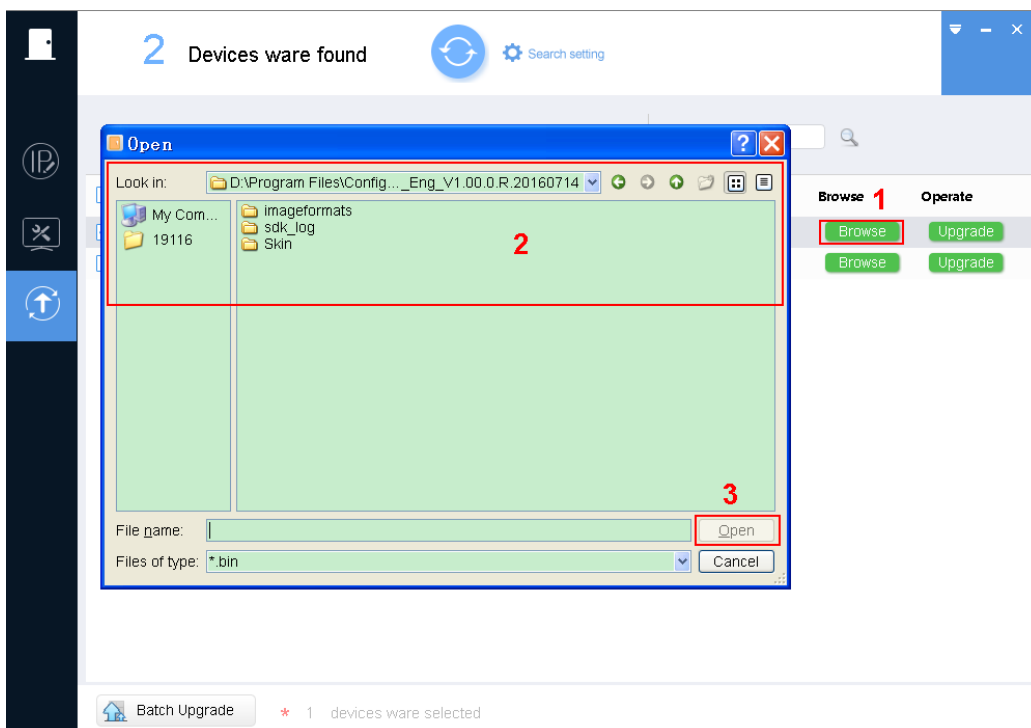


Figure 3-8

1. Click Browse of corresponding device you want to upgrade.
2. Select upgrade file.
3. Click Open.

Step 3. After you click Upgrade, system will start to upgrade and show progress of update. When




upgrading is complete, device will auto reboot

**Note:**

If device goes offline during upgrading process, then ACSConfigTool will stop at upgrading interface and once device is online again, upgrading will continue.

### 3.5.2 Batch Upgrade

Step 1. Click , system shows upgrade interface, see Figure 3-9.

Step 2. Check devices you want to upgrade

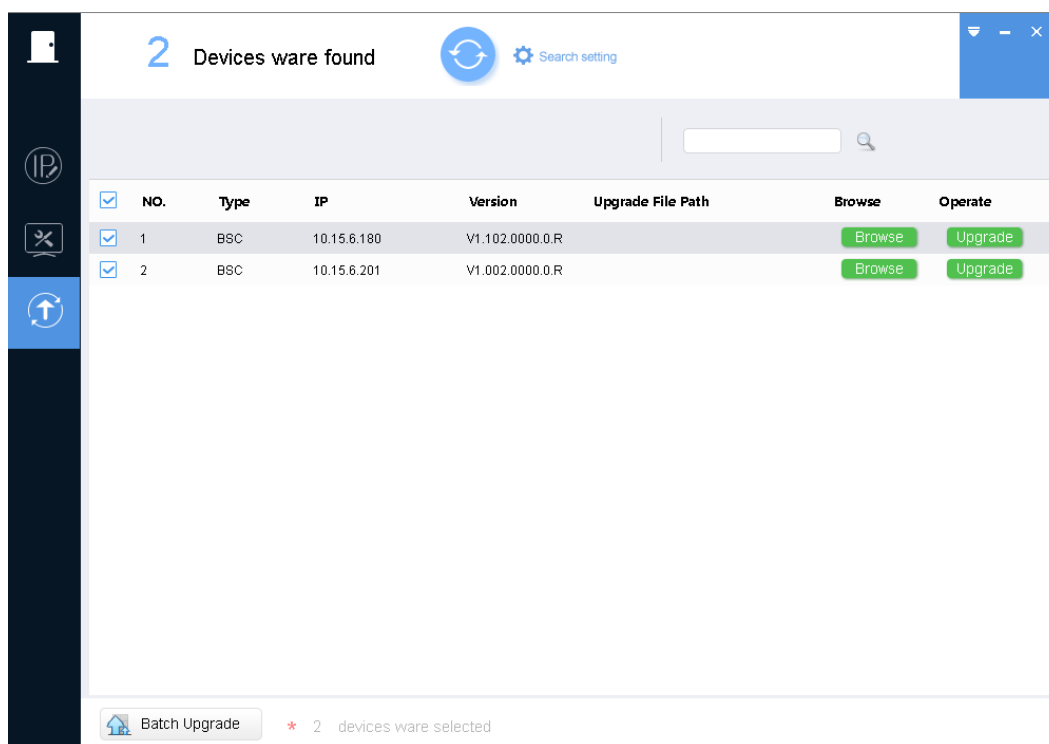


Figure 3-9

Step 3. Click Batch Upgrade, system shows Batch Upgrade interface, see Figure 3-10.

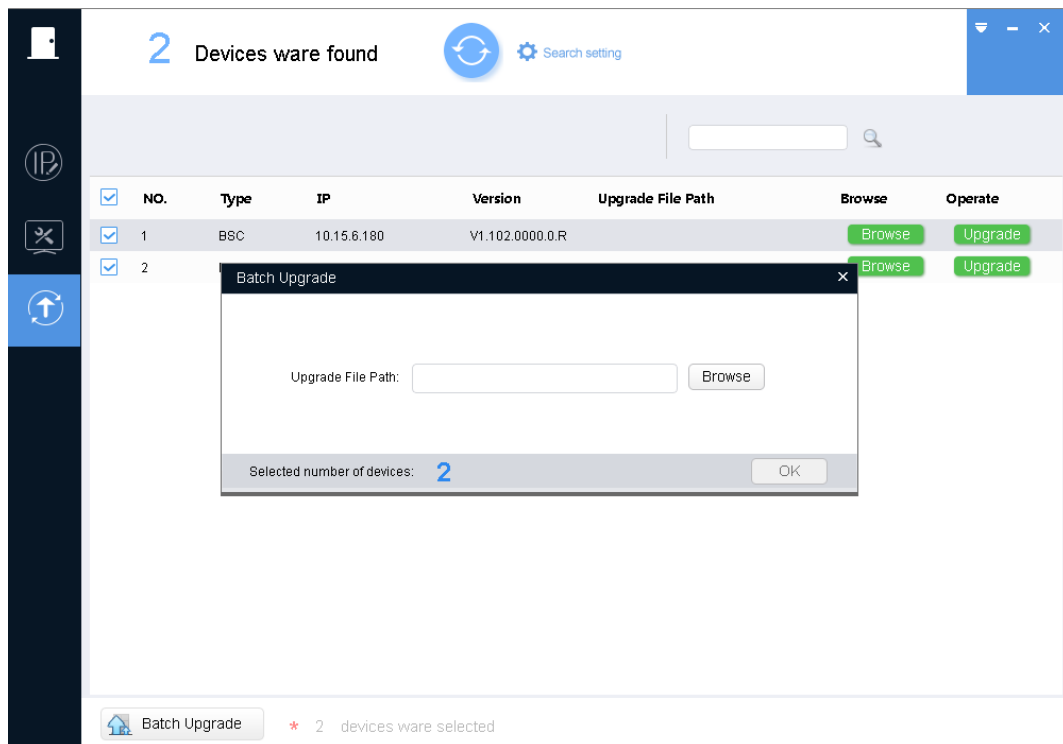


Figure 3-10

Step 4. Click Browse, select file, see Figure 3-11.

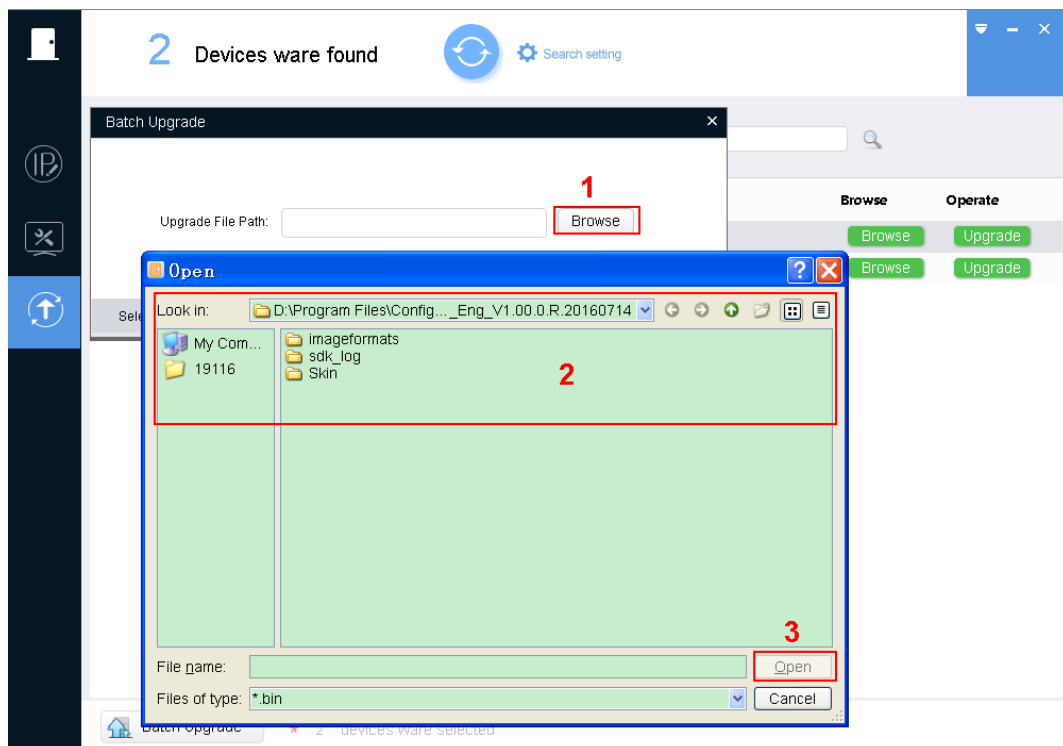


Figure 3-11

1. Click Browse of corresponding device you want to upgrade.
2. Select upgrade file.
3. Click Open.

Step 5. Click OK, system starts to upgrade.

**Note:**

If devices go offline during upgrading process, then ACSConfigTool will stop at upgrading interface and once device is online again, upgrading will continue.

**Note:**

- This manual is for reference only. Slight difference may be found in the user interface.
- All the designs and software here are subject to change without prior written notice.
- All trademarks and registered trademarks are the properties of their respective owners.
- If there is any uncertainty or controversy, please refer to the final explanation of us.
- Please visit our website or contact your local service engineer for more information.