

# Fire Alarm Solutions



# Keeping you safe

Teletek Electronics JSC is a leading manufacturer and a global supplier of security technology and services specialized in the field of intruder and fire alarm systems.

Founded in 1991 with headquarters in Sofia, Bulgaria the company has experienced a remarkable growth for the last 3 decades including innovations, state-of-the-art technology and reliable partnerships all over the globe.

With more than 200 experienced experts and still growing, our team aims at bringing excellence, quality and reliability into the lives of all customers. We have brought 3 decades of knowledge and expertise to the development of cutting edge security systems working closely with industry organizations, suppliers and customers to shape the future of alarm and fire safety.

One of the most priceless values contributing to our company`s success in today`s world is our professionals – people who love what they do and who know how to do it. Our employees who have been part of our family for 30 years encourage us to do our best for the upcoming generations and they honor us by making us part of their lives.



## Complete Systems Supplier

Our portfolio includes a full range of alarm and fire alarm solutions as well as communication modules and software for applications in security and monitoring systems.

Our systems are easy to configure, install, maintain and monitor and can easily be expanded to adapt to the necessities of your growing business.

Products within the range, including state-of-the-art control panels, detectors and alarm devices are quality-assured through a process of strict piece-by-piece and system-by-system testing.

We strive for transforming complex challenges into effective comprehensive products and system solutions ensuring that our customers can operate efficiently and keep maintenance costs down.



## Stable and reliable partner

We export our products to over 90 countries across 5 continents. With most of our Distributors we have been not only Partners but also friends with relations for over 20 years.

Our aim is to understand our Customers' needs and respond with innovations, improvements and new solutions for our industry and markets.



## Reliable detection solutions

We have gained serious knowledge and experience in the design and the production of alarm and detection systems. We offer the right solutions based on your needs and requirements.

Trust us and we will continue developing in our industry and supporting you so that you can benefit from our solutions and incorporate them into your business.

# Business expansion

New company headquarter and production with total area of over 11 200m<sup>2</sup>

3750m<sup>2</sup> OFFICE ADMINISTRATION  
with:

- Training and meeting halls
- 1200m<sup>2</sup> R&D offices & EMC Lab

4300m<sup>2</sup> PRODUCTION AREA  
with:

- 3 fully automated SMD lines
- Wave soldering area
- Final assembling area
- Automation assembly line for smoke detectors
- 24-hour live operation test area
- Service and repair shop area

2600m<sup>2</sup> STORAGE & CARGO AREA  
with:

- 3000 pallet spaces
- 5 handling spots
- 2 handling spots with bridges
- 1 handling spot for small trucks



# Addressable Solutions

Our portfolio includes panels with capacity of 48, 96 and 200 fire zones, supporting 500, 1000 up to 2000 devices. This flexibility helps the designers and installers to pick up a panel with features and options that satisfies the requirements of any business project including building of addressable fire alarm system, real-time and remote monitoring, maintenance, controlling devices for extinguishing and voice evacuation.

The range of Teletek Electronics JSC addressable solutions is expanded with Natron wireless fire series. This is a wireless fire alarm solution special designed for installations in museums, churches, old residential and public buildings with unique architecture, where the cable running is not allowed, but the fire alarm security is with the highest priority.

When it comes to a concrete choice, look at our fire alarm panels range and choose according your needs and requirement. The additional software applications will help you in calculation of the technical specifications of the fire alarm installation, and the special designed programs for programming, monitoring and management will provide full control for the end users.

The control panels can be accessed and remotely programmed via Ethernet and a standard PC using ProsTE Programming software. Thanks to the remote access, you can control and monitor your iRIS addressable system anytime, anywhere via Teletek Cloud Platform or Teletek PRO mobile application. This allows you to provide faster and more efficient response and reduce maintenance time and effort.



# Addressable

## Fire Alarm Control Panels

	iRIS8 B	iRIS8 S	iRIS4	SIMPO
Loops	1-8	1-4 / 1-8*	1-4	1 - 2
Devices per Loop	250	250	250	250
Loop Type Support	Teletek Electronics/ System Sensor	Teletek Electronics/ System Sensor	Teletek Electronics	Teletek Electronics
Galvanic Separation in Loops	✓	✓	✓	✗
Built-in isolator in Loops	✓	✓	✓	✓
Total number of devices per system	2000	1000 / 2000*	1000	500
Zones	200	200	96	48
Battery (12V/18Ah or 12V/17Ah)	2	1/2*	1	1
Multi language display	✓	✓	✓	✓
Redundant processor	✓	✓	✓	✗
Event Log	10 000	10 000	10 000	10 000
Day/Night Mode	✓	✓	✓	✓
Sounders/Strobes Synchronization	✓	✓	✓	✓
Display	7-inch TFT 800/480	7-inch TFT 800/480	5-inch TFT 800/480	4*40 symbols LCD
TCP/IP	Yes (built-in)	Yes (built-in)	Yes (built-in)	✗
Redundant network (RS485)	Yes (optional)	Yes (optional)	Yes (optional)	Yes (optional)
Cloud ready for adding to TeletekPRO application	✓	✓	✓	✗
Monitoring of the internal battery resistance	✓	✓	✓	✓
Box	Metal	Metal	Metal	Metal
Color	Grey/Red	Grey/Red	Grey/Red	Grey
Dimensions	430x660x120mm	430x330x117mm	430x330x117mm	306x412x81mm
Flush mounting	✓	✓	✓	✗
Software Support	ProsTE/Observer	ProsTE/Observer	ProsTE/Observer	ProsTE/Observer
Standard	EN 54-2/4 EN 54-13	EN 54-2/4 EN 54-13	EN 54-2/4	EN 54-2/4 EN 54-13

\*System configuration iRIS8 S + iRIS8 Ext

# iRIS Series

## Addressable control panels

iRIS range of intelligent analogue addressable fire detection equipment is designed and manufactured to comply with the latest EU standards, offering a complete, high quality and reliable cost-effective system for all projects - from small to large complex, net-workable sites.

The initial purpose of iRIS series panels is to be used for fire alarm signalling and warning, but due to the flexible design the iRIS fire alarm system can be modified to carry out many other functions like control and indication applications, with direct integration into intelligent buildings through MODBUS protocol.

iRIS8 addressable panels support operation with both Teletek Electronics (iRIS8 TTE Loop) and System Sensor (iRIS8 System Sensor Loop) communication protocols. The panels are capable to provide operation with a vast range of devices covering the requirements of the most demanding projects. Combined with the modular structure and the networking features there is no project which can't be accomplished with iRIS panels.

A wide range of functional modules is available providing different functions and connections - addressable loops, conventional zones, inputs and outputs as well as interfaces to various devices.

iRIS panels produced by Teletek Electronics JSC are fully approved and certified under EN 54-13:2017 third party testing, the latest European standard that ensures the overall compatibility and connectivity of components into a full fire detection and ensures optimal fire system performance.



EN 54-2/4  
EN 54-13

# iRIS8 B

## Expandable Addressable Fire Alarm Control Panel

EN 54-2/4  
EN 54-13

**BOSEC**



- Expandable from 1 to 8 loops
- Up to 2000 devices per panel
- Works with two types of communication protocols: Teletek Electronics and System Sensor
- Up to 64 panels in network

iRIS8 B is Expandable Addressable Fire Alarm Control Panel, the most powerful and sophisticated intelligent addressable fire alarm panel in Teletek Electronics JSC portfolio.

iRIS8 B is a solution for application in vast public or office buildings, hotels, store houses, etc. All loop controllers are situated in a single box secured with two access keys.

### Technical Specifications

Main power supply:	230VAC +10%/-15%
Frequency:	50/60Hz
Electrical output:	~30A
Internal resistance of the battery:	<0.3 Ohm
Operating temperature:	-5°C to +40°C
Weight (without battery):	~15kg

### iRIS8 B Color part number

- RAL 7011 (grey) - 31020064
- RAL 3003 (red, optional) - 31020121

### Features

Loops:	1 to 8
Devices per loop:	250 (Teletek Electronics loop) 198 (System Sensor loop)
Zones:	200
Back-up battery:	2 (12V/18Ah or 12V/17Ah)
Inputs (monitored):	3
Outputs (monitored):	7
Outputs (unmonitored, programmable):	5
RS232/RS485 interface:	Built-in
Programmable inputs/ outputs:	Up to 250
Memory LOG:	10 000 events
Panels in Ethernet network (built-in TCP/IP):	Up to 64
Panels in RS485 redundant network (optional module):	Up to 64
Thermal printer:	Optional
Display:	7-inch TFT 800/480
Multi language support	✓
Programming:	ProsTE software

# iRIS8 S

## Expandable Addressable Fire Alarm Control Panel

EN 54-2/4  
EN 54-13

**BOSEC**



- Expandable from 1 to 8 loops
- Up to 2000 devices per panel
- Works with two types of communication protocols: Teletek Electronics and System Sensor
- Up to 64 panels in network
- Flexible modular structure

iRIS8 S is an addressable fire alarm solution supporting 1 to 8 loops and maximum coverage of 200 zones.

The full capacity for the system with 8 loops is achieved with connection to an expansion box (iRIS8 Ext) with space for additional 4 loop controllers.

### Technical Specifications

Main power supply:	230VAC +10%/-15%
Frequency:	50/60Hz
Electrical output:	~30A
Internal resistance of the battery:	<0.3 Ohm
Operating temperature:	-5°C to +40°C
Weight (without battery):	
- iRIS8 S	~7kg
- iRIS8 Ext	~6,2kg

#### iRIS8 S Color part number

- RAL 7011 (grey) - 31020066
- RAL 3003 (red, optional) - 31020091

#### iRIS8 Ext Color part number

- RAL 7011 (grey) - 31020067
- RAL 3003 (red, optional) - 31020092

### Features (iRIS8 S+iRIS8 Ext)

Loops:	1 to 8
Devices per loop:	250 (Teletek Electronics loop) 198 (System Sensor loop)
Zones:	200
Back-up battery:	2 (12V/18Ah or 12V/17Ah)
Inputs (monitored):	3
Outputs (monitored):	7
Outputs (unmonitored, programmable):	5
RS232/RS485 interface:	Built-in
Programmable inputs/ outputs:	Up to 250
Memory LOG:	10 000 events
Panels in Ethernet network (built-in TCP/IP):	Up to 64
Panels in RS485 redundant network (optional module):	Up to 64
Thermal printer:	Optional
Display:	7-inch TFT 800/480
Multi language support:	✓
Programming:	ProsTE software



# iRIS4

## Expandable Addressable Fire Alarm Control Panel

EN 54-2/4



- Expandable from 1 to 4 loops
- Up to 1000 devices per panel
- Up to 64 panels in network

iRIS4 is the most convertible fire alarm panel in Teletek Electronics JSC portfolio. The panel offers a huge variety of functionalities, which help the installers for any type of installations – from small to large buildings. With possibility to add up to 4 loops, the installation can be expanded fluently starting with 250 devices to the maximum of 1000.

iRIS4 is situated in a small metal box and is a solution for application in vast public or office buildings.

### Technical Specifications

Main power supply:	230VAC +10%/-15%
Frequency:	50/60Hz
Electrical output:	~7A
Internal resistance of the battery:	<0.3 Ohm
Operating temperature:	-5°C to +40°C
Weight (without battery):	~6kg

### iRIS4 Color part number

- RAL 7011 (grey) - 31020106
- RAL 3003 (red, optional) - 31020119

### Features

Loops:	1 to 4
Devices per loop:	250 (Teletek Electronics loop)
Zones:	96
Back-up battery:	1 (12V/18Ah or 12V/17Ah)
Outputs (monitored):	4
Outputs (unmonitored, programmable):	5
Programmable inputs/ outputs:	Up to 250
Memory LOG:	10 000 events
Panels in Ethernet network (built-in TCP/IP):	Up to 64
Panels in RS485 redundant network (optional module):	Up to 64
Thermal printer:	Optional
Display:	5-inch TFT 800/480
Multi language support:	✓
Programming:	ProsTE software

# SIMPO

## Addressable control panel

The statistics shows that the majority of the installations does not require more than 100 detectors. However, the additional features that the addressable systems possess, are important for any type of installation – small, medium and large. SIMPO addressable control panel is perfect solution for applications which require a limited number of detectors but with reliability and performance that only addressable systems can provide, and it is a good and effective alternative to conventional systems.

SIMPO panel has 1 build-in loop on its main board, with the option for a second loop to be added. Up to 250 devices per loop with Teletek Electronics JSC communication protocol (SIMPO TTE Loop) could be connected to each loop, making a total of 500 devices. The simplicity of system configuration, easy installation, uncomplicated programming and simple end-user operation makes the SIMPO panel suitable for small installations, but also a good choice for medium size installations.

Panel's programming is simple and quick. The installer can use either the panel display menu, or our ProsTE programming software to configure the system. System status is visualized via LCD display and LED indication.

SIMPO panel supports operation with Observer monitoring software. In order to be connected with the Observer, the panel needs additional TTE LAN module.

SIMPO addressable fire alarm system is fully approved and certified under EN 54-13:2017 third party testing, the latest European standard that ensures the overall compatibility and connectivity of components into a full fire detection and ensures optimal fire system performance.



EN 54-2/4  
EN 54-13

# SIMPO

## Expandable Addressable Fire Alarm Control Panel

EN 54-2/4  
EN 54-13



- Expandable from 1 to 2 loops
- Up to 500 devices per panel
- Up to 64 panels in network

SIMPO is entry level solution for any addressable installations. The panel is the perfect solution for your installations. It supports operation with up to two loops with coverage of 48 zones.

The panel comes in a metal casing with a multilingual LCD display and changeable text labels easier customizing.

### Technical Specifications

Main power supply:	90-264VAC
Frequency:	47-440Hz
Electrical output:	4.2A
Internal resistance of the battery:	<0.3 Ohm
Operating temperature:	-5°C to +40°C
Weight (without battery):	~4.2kg

### Features

Loops:	1 to 2
Devices per loop:	250 (Teletek Electronics loop)
Zones:	48
Back-up battery:	1 (12V/18Ah or 12V/17Ah)
Inputs (monitored):	3
Outputs (monitored):	6
Outputs (unmonitored, programmable):	4
Memory LOG:	10 000 events
Panels in RS485 redundant network (optional module):	Up to 64
Thermal printer:	Optional
Display:	4*40 symbols LCD
Multi language support:	✓
Programming:	ProsTE software

## IRIS/SIMPO



### iRIS8 Teletek Electronics Loop Expander

- Compatible with iRIS8 B, iRIS8 S, iRIS8 Ext, iRIS4
- Loop Expander for 1 loop
- Teletek Electronics communication protocol
- Supports SensiIRIS devices
- Max. consumption of the loop devices - 0,5A
- Max. number of devices in the loop - 250



### iRIS8 System Sensor Loop Expander

- Compatible with iRIS8 B, iRIS8 S, iRIS8 Ext
- Loop Expander for 1 loop
- System Sensor communication protocol
- Supports System Sensor devices
- Max. consumption of the loop devices - 0,5A
- Max. number of devices in the loop - 198



### SIMPO Loop Expander

- Compatible with SIMPO
- Loop Expander for 1 loop
- Teletek Electronics protocol
- Supports SensiIRIS devices
- Max. consumption of the loop devices - 0,5A
- Max. number of devices in the loop - 250



### IRIS/SIMPO Redundant Module

- Compatible with iRIS8 B, iRIS8 S, iRIS8 Ext, iRIS4, SIMPO
- RS485 Network module
- The maximum length between two modules is 1000m
- Direct installation on slot



### Evacuation Interface Module

- Evacuation voice interface module
- For connection to SPIKA or PASO series voice evacuation panels
- Compatible with iRIS4 and SIMPO
- RS485 communication protocol
- Network connection with up to 5 voice evacuation panels
- Direct installation on slot



### TTE LAN Communication Module

- Compatible with SIMPO
- LAN Communication module
- Serial communication with SIMPO panel and monitoring software Observer via ModBUS protocol
- 6 programmable inputs/outputs, OC type (up to 100mA each)

# Interface Panels

## IRIS/SIMPO



### IRIS Printer

- Thermal printer in a metal box
- Suitable for modular structure with iRIS8 B, iRIS8 S, iRIS4
- Power supply 100-240VAC, 1.5A
- Serial interface RS-232C
- Paper width 80mm, valid print width 72mm
- Print speed max. 170mm/sec
- Self test and status indication
- Colour - grey
- Dimensions - 430x330x117mm
- Certified to EN 54-13



### IRIS PS72

- Back-up power supply unit
- Suitable for modular structure with iRIS8 B, iRIS8 S, iRIS8 Ext, iRIS4
- Power supply 100-240VAC, 1.5A
- Place for 2 accumulator batteries 12V/18Ah or 12V/17Ah
- Colour - grey
- Dimensions - 430x330x117mm
- Certified to EN 54-4, EN 54-13



### Modular Structure

- Applied for iRIS8 B, iRIS8 S, iRIS8 Ext, iRIS4
- Specially designed metal boxes for building of modular structures
- Easy mounting the separate boxes to each other
- Included joining fittings
- Compact structure
- The power supply and connection cables are hidden inside
- Possible connection of up to 4 separate panels in a common structure
- Secured access with a special key
- All of the control equipment is installed at one place for easy maintenance

# REPEATER

## TFT Repeater Panel

EN 54-2/4  
EN 54-13



- LAN and RS485 built-in interface
- Up to 64 panels in network
- Memory log for 10 000 events

The TFT Repeater panel is designed to display the events of the connected in a network - via LAN or RS485 interface - addressable fire panels - iRIS8 series, iRIS4 and SIMPO.

The Repeater panel has a built-in real time clock. Available micro USB for latest software and firmware updates.

## Technical Specifications

Main power supply*:	24±4VDC
Frequency:	50/60Hz
Electrical output:	0.4A
Operating temperature:	-5°C to +50°C
Dimensions:	200x330x48mm
Weight:	~0.9kg

\* The Repeater panel can be powered directly from the fire alarm panel or via external power supply source with battery back-up power supply.

## Features

Protocol type:	TTE
Panels in redundant network:	up to 64
Network type topology:	Ring or line
RS485 interface:	Yes, built-in
LAN interface:	Yes, built-in
USB interface for firmware updates:	Yes, built-in
Connection wires:	0.5-2.5mm <sup>2</sup>
Max. length between two panels:	1000m
Memory LOG:	10 000 events
Display:	7-inch TFT 800/480
Multi language support:	✓
Color:	Grey

# REPEATER

## Repeater Panel

EN 54-2/4  
EN 54-13



- RS485 built-in interface
- Up to 64 panels in network
- Memory log for 10 000 events

The Repeater panel is designed with LED indication of the system status and a LCD display for text messages for events.

The Repeater panel has a built-in real time clock. Available micro USB for latest software and firmware updates.

## Technical Specifications

Main power supply*:	24±4VDC
Frequency:	50/60Hz
Electrical output:	0.11A
Operating temperature:	-5°C to +50°C
Dimensions:	200x330x48mm
Weight:	~0.77kg

\* The Repeater panel can be powered directly from the fire alarm panel or via external power supply source with battery back-up power supply.

## Features

Protocol type:	TTE
Panels in redundant network:	up to 64
Network type topology:	Ring or line
RS485 interface:	Yes, built-in
USB interface for firmware updates:	Yes, built-in
Connection wires:	0.5-2.5mm <sup>2</sup>
Max. length between two panels:	1000m
Memory LOG:	10 000 events
Display:	4x40 symbols, LCD
Multi language support:	✓
Color:	Grey

# Addressable

## Detectors



### SensoIRIS T110/T110 IS

- Fixed Temperature and Rate of Rise detector
- Supports Teletek Electronics protocol
- Class\*, selectable from the control panel - A1/R, A2/S, B/S
- Day/Night mode (programmable from the panel)
- LED indication with 360° visibility
- Compatible with standard bases B124 and B124-HP
- IP30

**SensoIRIS T110 IS Color part number**

- RAL 9005 (black) - 31060090

EN 54-5  
EN 54-17  
EN 54-13



### SensoIRIS S130/S130 IS

- Optical smoke detector
- Supports Teletek Electronics protocol
- Sensitivity, selectable from the control panel - High/Normal/Middle/Low
- Day/Night mode (programmable from the panel)
- LED indication with 360° visibility
- Compatible with standard bases B124 and B124-HP
- IP30

**SensoIRIS S130 IS Color part number**

- RAL 9005 (black) - 31060089

EN 54-7  
EN 54-17  
EN 54-13



### SensoIRIS M140/M140 IS

- Combined (optical smoke and temperature) detector
- Supports Teletek Electronics protocol
- Class\* A1/R
- Sensitivity, selectable from the control panel - High/Normal/Middle/Low
- Day/Night mode (programmable from the panel)
- LED indication with 360° visibility
- Compatible with standard bases B124 and B124-HP
- IP30

**SensoIRIS M140 IS Color part number**

- RAL 9005 (black) - 31060078

EN 54-5  
EN 54-7  
EN 54-17  
EN 54-13



### SensoIRIS B124

- Fire base with low profile design, compatible with SensoIRIS detectors
- Wire gauge for terminals - 0.4 - 2.0mm<sup>2</sup>
- Material (plastic) - ABS
- Dimensions 103x11mm

**SensoIRIS B124 Color part number**

- RAL 9005 (black) - 31060080

EN 54-13



### SensoIRIS B124-HP

- Fire base with high profile design, compatible with SensoIRIS detectors
- Wire gauge for terminals - 0.4 - 2.0mm<sup>2</sup>
- Engraved signs for the terminals
- Material (plastic) - ABS
- Dimensions 104x17.5mm
- Special info plate (size 45x11mm)





# Addressable

## Manual Call Points



### SensoIRIS MCP150

- Manual call point
- Supports Teletek Electronics protocol
- Type of the working element - resettable (flexible)
- Type (according to EN 54-11) - A
- Built-in isolator
- Material (plastic), color - ABS, red
- Optional protective plastic cover
- IP40

EN 54-11  
EN 54-17  
EN 54-13



### SensoIRIS MCP150 IP67

- Waterproof protected manual call point
- Supports Teletek Electronics protocol
- Built-in isolator module
- Surface mounting
- Resettable flexible element
- Type (according to EN 54-11) - A
- LED indication
- Special test tool for resetting after alarm event
- Protective plastic cover
- Cable glands and o-ring protected sealant
- IP67 according EN 60529

EN 54-11  
EN 54-17  
EN 54-13  
EN 60529



### Call Point Plastic Cover Set

- Set of 5 pcs. protective plastic cover for manual call-points
- Compatible with SensoIRIS MCP150 and SensoIRIS MCP150 IP67



### SensoIRIS MCP150MR - Metal, powder-coated/Red

### SensoIRIS MCP150PR - Plastic, ABS/Red

### SensoIRIS MCP150PB - Plastic, ABS/Blue

- Manual call points
- Supports Teletek Electronics protocol
- Working element (2 elements): frangible (a break glass) and operating (a button)
- Type (according to EN 54-11) - B
- Built-in isolator
- Special key for opening
- Auto-reset at door closing

EN 54-11  
EN 54-17  
EN 54-13

# Addressable

## Input/Output Modules IP21



### SensolIRIS MIO22

- Module with 2 analogue inputs and 2 relay outputs
- Supports Teletek Electronics protocol
- Placed in plastic box with transparent cover for easy inspection
- Loop powered with built-in isolator

EN 54-18  
EN 54-17  
EN 54-13



### SensolIRIS MIO04

- Module with 4 relay outputs
- Supports Teletek Electronics protocol
- Placed in plastic box with transparent cover for easy inspection
- Loop powered with built-in isolator

EN 54-18  
EN 54-17  
EN 54-13



### SensolIRIS MIO40

- Module with 4 analogue inputs
- Supports Teletek Electronics protocol
- Placed in plastic box with transparent cover for easy inspection
- Loop powered with built-in isolator

EN 54-18  
EN 54-17  
EN 54-13



### SensolIRIS MIO22M

- Module with 2 inputs and 2 monitored outputs
- Supports Teletek Electronics protocol
- Two operation modes for the outputs: monitored and unmonitored
- Placed in plastic box with transparent cover for easy inspection
- Loop powered with built-in isolator

EN 54-18  
EN 54-17  
EN 54-13



### SensolIRIS MC-Z

- Conventional zone module
- Supports Teletek Electronics protocol
- Interface between a zone of conventional detectors and loop expander
- Placed in plastic box with transparent cover for easy inspection
- Loop powered with built-in isolator

EN 54-18  
EN 54-17  
EN 54-13



### SensolIRIS MOUT

- Potential output for conventional sounders
- Supports Teletek Electronics protocol
- Interface between a zone of conventional sounders and loop expander
- Placed in plastic box with transparent cover for easy inspection
- Built-in isolator

EN 54-18  
EN 54-17  
EN 54-13



### SensolIRIS MOUT-240

- Electrical mains switching output
- Supports Teletek Electronics protocol
- Suitable for control of 240VAC voltage circuits
- Placed in plastic box with transparent cover for easy inspection
- Loop powered with built-in isolator

EN 54-18  
EN 54-17  
EN 54-13

# Addressable

## Input/Output Modules IP65



### SensolIRIS MIO22 IP65

EN 54-18  
EN 54-17

- Module with 2 analogue inputs and 2 relay outputs
- Supports Teletek Electronics protocol
- Placed in big plastic box suitable for wall mounting
- Loop powered with built-in isolator



### SensolIRIS MIO04 IP65

EN 54-18  
EN 54-17

- Module with 4 relay outputs
- Supports Teletek Electronics protocol
- Placed in big plastic box suitable for wall mounting
- Loop powered with built-in isolator



### SensolIRIS MIO40 IP65

EN 54-18  
EN 54-17

- Module with 4 analogue inputs
- Supports Teletek Electronics protocol
- Placed in big plastic box suitable for wall mounting
- Loop powered with built-in isolator



### SensolIRIS MIO22M IP65

EN 54-18  
EN 54-17

- Module with 2 inputs and 2 monitored outputs
- Supports Teletek Electronics protocol
- Two operation modes for the outputs: monitored and unmonitored
- Placed in big plastic box suitable for wall mounting
- Loop powered with built-in isolator



### SensolIRIS MC-Z IP65

EN 54-18  
EN 54-17

- Conventional zone module
- Supports Teletek Electronics protocol
- Interface between a zone of conventional detectors and loop expander
- Placed in big plastic box suitable for wall mounting
- Loop powered with built-in isolator



### SensolIRIS MOUT IP65

EN 54-18  
EN 54-17

- Potential output for conventional sounders
- Supports Teletek Electronics protocol
- Interface between a zone of conventional sounders and loop expander
- Placed in big plastic box suitable for wall mounting
- Built-in isolator



### SensolIRIS MOUT-240 IP65

EN 54-18  
EN 54-17

- Electrical mains switching output
- Supports Teletek Electronics protocol
- Suitable for control of 240VAC voltage circuits
- Placed in big plastic box suitable for wall mounting
- Loop powered with built-in isolator

# Addressable

## Special Detectors&Modules



### SensoIRIS GAS

- Addressable gas leakage detector
- Supports Teletek Electronics protocol
- Detection of CH4 (methane) and LPG (propane-butane)
- LED indication for the status
- Pre alarm and Fire alarm status alert
- Built-in isolator module
- Color - white
- Designed according EN 50194-1
- IP30



### SensoIRIS MIMIC

- 32 Outputs for LED control
- Supports Teletek Electronics protocol
- Two operation modes for LED outputs control: common-anode or common-cathode, programmable via jumper on the PCB
- Built-in compensating resistors
- Built-in isolator module
- Easy for operation pluggable connectors for quick wire installation on the site
- Special inputs for LED operation Test, Silence alarm and Reset of the Fire panel, Silence of the module's buzzer
- Special LED Outputs for repeating the FIRE, Fault and Disablement indication of the fire panel
- Separate LED Output for indication of the power supply status of the connected Mimic panel
- Enclosure box for wall mounting, IP43

EN 54-18  
EN 54-17  
EN 54-13



### SensoIRIS MiniOUT

- Mini module with one relay output
- Compact size for optional built-in mounting
- Available in small size enclosure box for wall mounting
- Supports Teletek Electronics protocol

EN 54-18



### SensoIRIS MINP M

- Mini module with one monitored input
- Used for connection of external control devices, gas detection, panic switches, etc
- Compact size for optional built-in mounting
- Available in small size enclosure box for wall mounting
- Supports Teletek Electronics protocol

EN 54-18  
EN 54-13



### SensoIRIS MISO

- Isolator module
- Placed in plastic box with cable running holes for easy installation
- Supports Teletek Electronics protocol
- IP40

EN 54-17  
EN 54-13

# Addressable

## Sounders/Strobes



### Belinda WSOU/WSOU IS

- Wall mount sounder
- Two sound levels - LOW: 82-92dB; HIGH: 100-103dB
- 32 tone types selectable from the panel
- Supports Teletek Electronics protocol
- Loop synchronization for better alarm signal
- Loop powered
- Color - white (RAL 9016)
- Compatible with standard bases B124 and B124-HP
- IP21C, type A

EN 54-3  
EN 54-17  
EN 54-13



### Belinda WSST/WSST IS EN 54-23

- Wall mount VAD sounder and strobe
- Two sound levels - LOW: 80-88dB; HIGH: 92-98dB
- 32 tone types selectable from the panel
- Supports Teletek Electronics protocol
- Loop synchronization for better alarm signal
- Loop powered
- Color - white cap (RAL 9016), white transparent body
- Compatible with standard bases B124 and B124-HP
- IP21C, type A; Coverage volume: Open class

EN 54-3  
EN 54-23  
EN 54-17  
EN 54-13



### SensoIRIS WSOU/WSOU IS

- Wall mount sounder
- Two sound levels - LOW: 82-92dB; HIGH: 100-103dB
- 32 tone types selectable from the panel
- Supports Teletek Electronics protocol
- Loop synchronization for better alarm signal
- Loop powered
- Color - red (RAL 3020)
- Compatible with standard bases B124 and B124-HP
- IP21C, type A

EN 54-3  
EN 54-17  
EN 54-13



### SensoIRIS WS/WS IS

- Wall mount sounder and strobe
- Two sound levels - LOW: 80-88dB; HIGH: 92-98dB
- 32 tone types selectable from the panel
- Supports Teletek Electronics protocol
- Loop synchronization for better alarm signal
- Loop powered
- Color - red, transparent
- Compatible with standard bases B124 and B124-HP
- IP43C, type B

EN 54-3  
EN 54-13



### SensoIRIS WSST/WSST IS EN 54-23

- Wall mount VAD sounder and strobe
- Two sound levels - LOW: 80-88dB; HIGH: 92-98dB
- 32 tone types selectable from the panel
- Supports Teletek Electronics protocol
- Loop synchronization for better alarm signal
- Loop powered
- Color - red cap (RAL 3020), white transparent body
- Compatible with standard bases B124 and B124-HP
- IP21C, type A; Coverage volume: Open class

EN 54-3  
EN 54-23  
EN 54-17  
EN 54-13

# Addressable

## Sounders/Strobes

EN 54-3  
EN 54-17



### SensoIRIS CSOU/CSOU IS

- Sounder with integrated base, IP21C, type A
- Built-in isolator module (CSOU IS)
- Compatible with standard bases B124 and B124-HP
- Compatible with VAD WST and VAD RST - visual alarm devices with base
- Two sound levels - LOW: 81dB (A)  $\pm 3\text{dB}@3\text{m}$ ; HIGH: 88dB (A)  $\pm 3\text{dB}@3\text{m}$
- 32 tone types selectable from the panel
- Supports Teletek Electronics protocol
- Loop synchronization for better alarm signal
- Loop powered
- Optional cover when the base is used only as a sounder
- Flexible solution for expanding of present addressable fire alarm systems without need of additional installation and cable running on the site, just direct mounting on:



EN 54-3  
EN 54-17



### SensoIRIS CSST/CSST IS

- Sounder with strobe with integrated base, IP21C, type A
- Built-in isolator module (CSST IS)
- Compatible with standard bases B124 and B124-HP
- Two sound levels - LOW: 81dB (A)  $\pm 3\text{dB}@3\text{m}$ ; HIGH: 88dB (A)  $\pm 3\text{dB}@3\text{m}$
- 32 tone types selectable from the panel
- Supports Teletek Electronics protocol
- Loop synchronization for better alarm signal
- Loop powered
- Optional cover when the base is used only as a sounder
- Flexible solution for expanding of present addressable fire alarm systems without need of additional installation and cable running on the site, just direct mounting on:



### Sounder Plastic Cover Set

- Protective plastic cover
- Applicable for SensoIRIS CSxx when the device is used only as a sounder
- Set of 5 pcs. protective plastic cover for sounders



# Addressable

## Sounders/Strobes



### SensolIRIS VAD WST

EN 54-23

- Visual alarm device with base
- Compatible with SensolIRIS CSOU/CSOU IS sounders
- White LEDs
- Coverage volume: C-3-6
- Loop powered
- Wire gauge for terminals - 0.4 - 1.5mm<sup>2</sup>
- Dimensions 122x139x27mm
- Special info plate (size 45x15mm) suitable for placing a sticker with device address and name



### SensolIRIS VAD RST

EN 54-23

- Visual alarm device with base
- Compatible with SensolIRIS CSOU/CSOU IS sounders
- Red LEDs
- Coverage volume: C-3-5
- Loop powered
- Wire gauge for terminals - 0.4 - 1.5mm<sup>2</sup>
- Dimensions 122x139x27mm
- Special info plate (size 45x15mm) suitable for placing a sticker with device address and name



### SensolIRIS B124

EN 54-13

- Fire base with low profile design
- Compatible with SensolIRIS and Belinda sounders/strobes
- Wire gauge for terminals - 0.4 - 2.0mm<sup>2</sup>
- Material (plastic) - ABS
- Dimensions 103x11mm



### SensolIRIS B124-HP

- Fire base with high profile design
- Compatible with SensolIRIS and Belinda sounders/strobes
- Wire gauge for terminals - 0.4 - 2.0mm<sup>2</sup>
- Engraved signs for the terminals
- Material (plastic) - ABS
- Dimensions 104x17.5mm
- Special info plate (size 45x11mm)



### SensolIRIS WSB IP65

EN 54-13

- Waterproof protected deep base
- Wall mounting
- SensolIRIS B124 standard base factory mounted
- Installation wires - 3mm<sup>2</sup>
- Cable glands and o-ring protected sealant
- IP65 according EN 60529
- Compatible with Belinda WSxx wall sounders
- Compatible with SensolIRIS WSxx wall sounders



# Addressable

## Handheld Service Tools



### SensoIRIS Programmer

- Programming tool
- Compatible with SensoIRIS detectors, sounders and modules
- Supports Teletek Electronics protocol
- Mobility in operation
- Multi language support
- Optional battery power supply 4x1.5V (not included)
- The kit includes: cables for programming SensoIRIS modules; AC-DC adapter



### SensoIRIS Loop Tester

- Loop and line diagnostic tool
- Cable test
- Easy location of short and break faults
- Auto-addressing support
- Compatible with SensoIRIS detectors, sounders and modules
- Supports Teletek Electronics protocol
- Mobility in operation
- Multi language support
- Easy for operation 2-cage clamp connectors for quick wire connection
- The kit includes: 4 pcs 2-cage terminals; 4 pcs wires (2 red and 2 black); AC-DC adapter



# Wireless Fire Alarm Detection

Natron is a newly designed series of wireless fire devices suitable for all applications where wired fire devices cannot be installed because of economic or aesthetic reasons.

Whether you are planning a new installation or have an existing fire detection and alarm system to extend, Natron is a perfect solution, particularly if access and time is a key limiting factor.

You could make your Teletek Electronics JSC conventional (any MAG panel) or iRIS addressable system a hybrid installation with Natron range which will grow as a family devices from now on with more modules and advantages. Wireless device integration and control now is more flexible than ever before with Natron Series – allowing hardwired and wireless detection technologies to co-exist seamlessly in appropriate proportions, irrespective of the type, age or technology of the existing 'host' hard-wired system.

The Natron Wireless Fire Detection Series can be integrated into existing addressable panels supporting Teletek Electronics protocols directly on the loop. You can use up to 5 wireless gateway modules per building and up to 32 wireless devices per expander or up to 160 devices per system.

Each Natron wireless gateway module can extend the range of the fire alarm system covering up to 1500 m additional space area and thus increasing the stability and continuity of the system.



# Natron

## Wireless Fire Alarm



### Natron WE-A

- Wireless network gateway module for addressable panels
- Compatible for operation with iRIS8 and iRIS4 fire alarm panels
- Built-in isolator
- Loop powered
- Up to 32 NATRON series wireless devices enrolled to a gateway module
- Dipole antenna, SMA connector type
- LCD display, dot matrix 16x2
- Multilanguage menus

EN 54-18  
EN 54-17  
EN 54-25



### Natron WE-C

- Wireless network gateway module for conventional panels
- Compatible for operation with MAG series fire alarm panel
- Direct connection to conventional zone terminal
- Specially designed for extending the application of conventional fire alarm panels
- Up to 32 NATRON series wireless devices enrolled to a gateway module
- Dipole antenna, SMA connector type
- LCD display, dot matrix 16x2
- Multilanguage menus

EN 54-18  
EN 54-25



### Natron TD

- Fixed temperature and Rate of Rise detector
- Class\* (selectable from panel/module menus) - A1/R, A2/S
- Up to 1500m communication range with the gateway module
- Built-in buzzer for announcing of events - sound volume 80dB/1m
- Radiated power  $\leq 20$  mW
- Batteries: 2 x CR123A 3V
- ~ 10 years battery life

EN 54-5  
EN 54-25



### Natron SD

- Optical-smoke detector
- 4 sensitivity levels (selectable from panel/module menus)
- Up to 1500m communication range with the gateway module
- Built-in buzzer for announcing of events - sound volume 80dB/1m
- Radiated power  $\leq 20$  mW
- Batteries: 3 x CR123A 3V
- ~ 10 years battery life

EN 54-7  
EN 54-25



### Natron MD

- Combined temperature and optical-smoke detector
- Class\* - A1/R
- 4 sensitivity levels (selectable from panel/module menus)
- Up to 1500m communication range with the gateway module
- Built-in buzzer for announcing of events - sound volume 80dB/1m
- Radiated power  $\leq 20$  mW
- Batteries: 3 x CR123A 3V
- ~ 10 years battery life

EN 54-5  
EN 54-7  
EN 54-25

\* Category, according EN 54-5:2017+A1:2018

# Natron

## Wireless Fire Alarm



### Natron WSS

- Wall mount VAD sounder and strobe
- Two sound levels - LOW: 74-86dB; HIGH: 77-97dB
- 32 tone types (selectable from panel/module menus)
- Up to 1500m communication range with the gateway module
- Radiated power  $\leq 20$  mW
- Batteries: 4 x CR123A 3V
- ~ 8 years battery life
- IP31, type A
- Coverage volume: Open class

EN 54-3  
EN 54-23  
EN 54-25



### Natron MCP

- Manual call point
- Up to 1500m communication range with the gateway module
- Type of the working element - resettable (flexible)
- Type (according to EN 54-11) - A
- Radiated power  $\leq 20$  mW
- Battery: 1 x CR123A 3V
- ~ 10 years battery life
- Material (plastic), color - ABS, red
- Optional protective plastic cover
- IP40

EN 54-11  
EN 54-25



### Natron MCP-PR

- Manual call point
- Up to 1500m communication range with the gateway module
- Working element (2 parts): frangible (a break glass) and operating (a button)
- Type (according to EN 54-11) - B
- Radiated power  $\leq 20$  mW
- Battery: 1 x CR123A 3V
- ~ 10 years battery life
- Material (plastic) - ABS; color - red (MCP-PR)/blue (MCP-PB)
- Special key for opening
- Auto-reset at door closing

EN 54-11  
EN 54-25



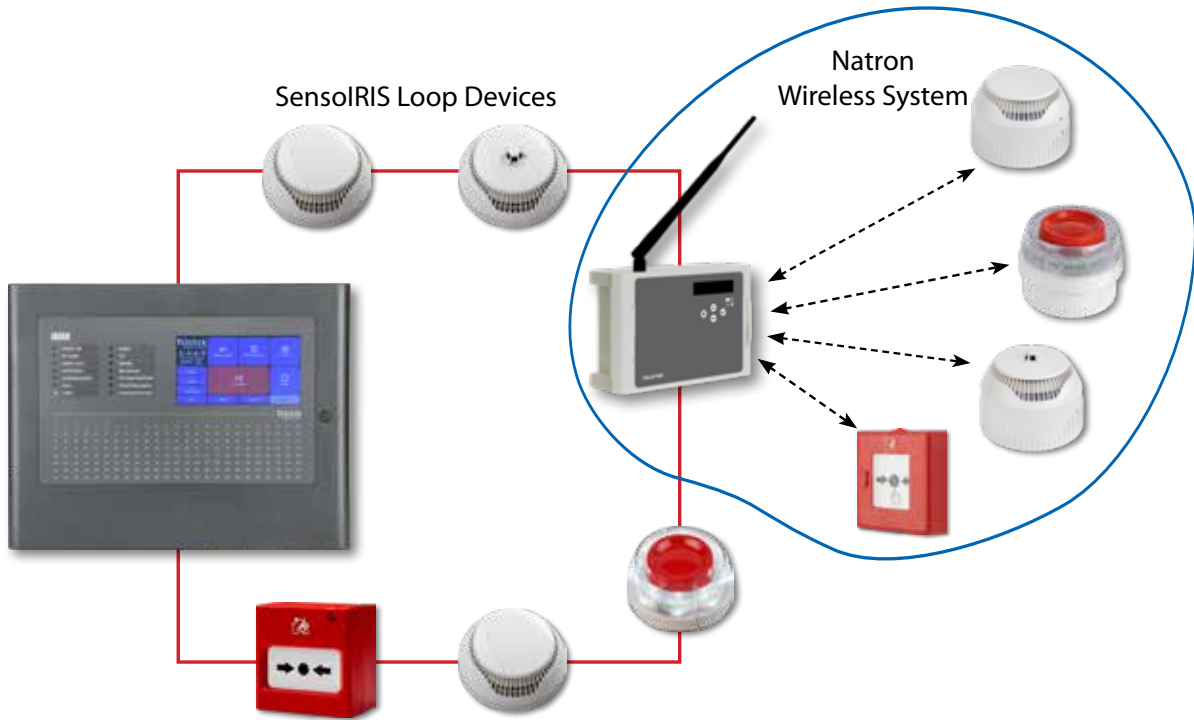
### Natron Test Kit

- Special kit for testing the signal strength and the covering communication range at the place of installation of wireless Natron devices
- Compact plastic suitcase with comfortable soft grip handle for storing and transportation of the testing equipment
- Kit contents:
  - Natron WE-T - Panel for test, possibility to power up with batteries or with power adapter
  - Natron Tst Det - Device for test at the place of installation
  - Extension rods - 3x0.35m,  $\varnothing 25$ mm
  - Plastic pipe fittings
  - Power adapter 15VDC/1A, 15W
  - Battery 3V CR123A - 9 pcs

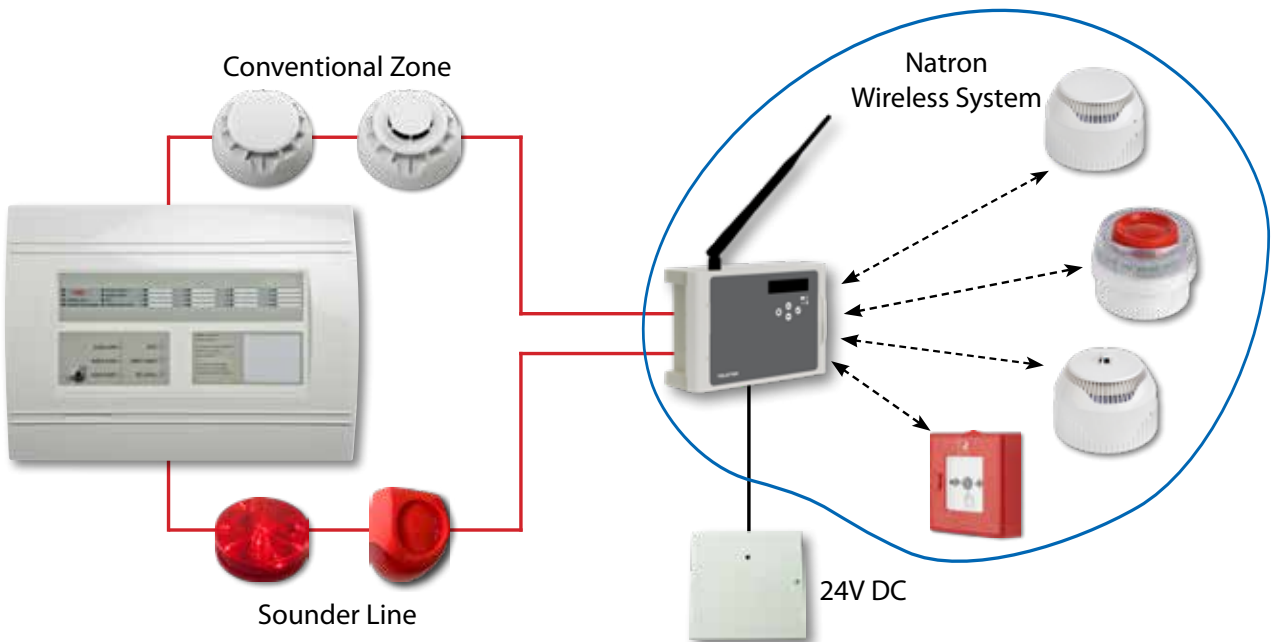
# Natron

## System Architecture

### Expanding Addressable Fire Alarm System via Natron WE-A



### Expanding Conventional Fire Alarm System via Natron WE-C



# Software

Every fire alarm system must be strictly observed and maintained after installation. Teletek Electronics JSC helps the engineers and maintenance technicians providing some special designed software application tools for monitoring, programming and management.

The designed tools are compatible with our whole range of addressable fire alarm panels and also provides adding extra features as real-time video surveillance on site; instant push notifications for events; remote controlling of devices, etc. The whole range of produced addressable fire alarm panels is now cloud ready, as every panel is prepared for direct connection with the cloud service provided by Teletek Electronics JSC.

- **Teletek Cloud & Teletek PRO - Remote connectivity and visibility!**

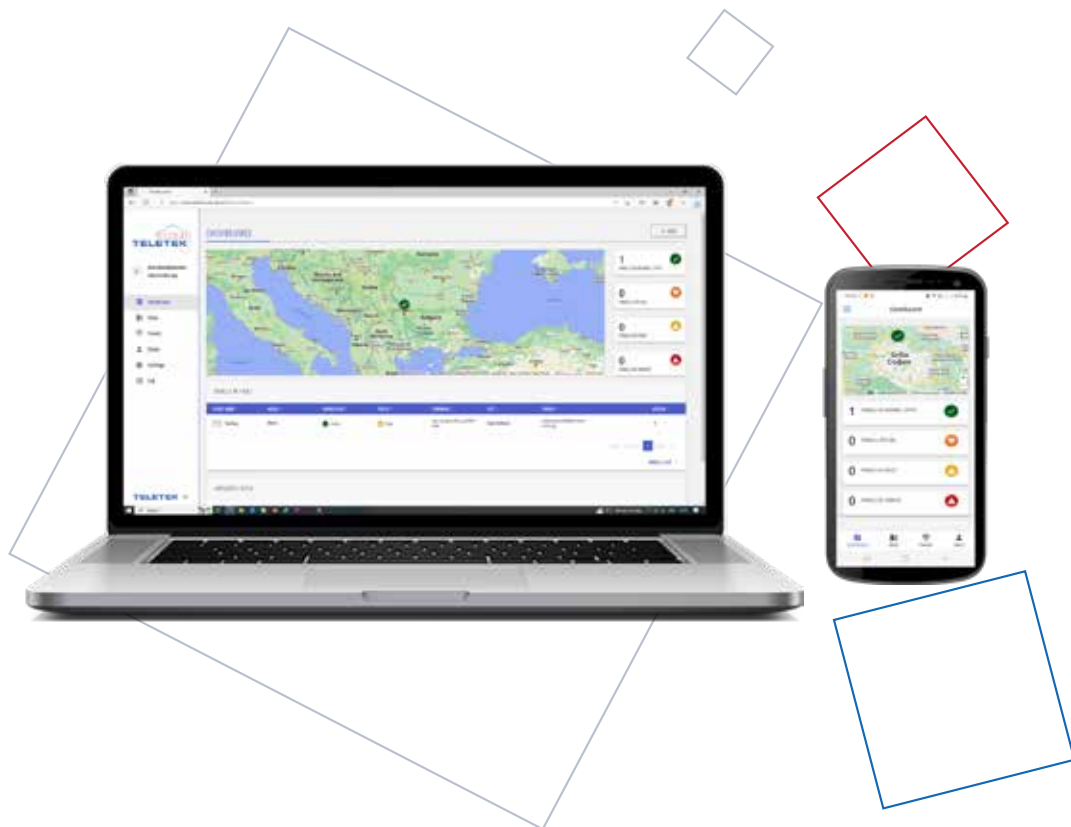
Our cloud service solutions save time of the support engineers and technicians with real time monitoring of the protected sites. The users are kept informed for possible trouble, faults and alarms at anytime and anywhere as this allows you to provide faster and more efficient response and reduce maintenance time and effort.

- **Observer - Real-time monitoring and control of single or networked panels!**

Up to 32 fire alarm panels, production of Teletek Electronics JSC, can be connected in a network, making it ideal for the largest sites including schools, hospitals, multi-site retail/supermarkets, critical infrastructure and major commercial and industrial facilities. The panels are connected in a network via LAN (Ethernet).

- **ProsTE - Quick and easy programming of every panel!**

This is a software package for programming of Teletek Electronics JSC intruder and fire alarm panels. The software allows fast and user-friendly programming to the benefit of the installer. Some of the special features of this software tool are the quick reading the preset panel's configuration, settings and programming the options via convenient user interface, easy recording the new set configuration in the panel. The old, present, and even future configuration of a panel's settings can be saved in a special file format and kept in a data base for archive.



# Software

## Remote Maintenance



### Teletek CLOUD

Save time and optimize maintenance activities with Teletek Cloud. Teletek CLOUD provides remote access and real-time monitoring and maintenance of iRIS addressable fire alarm systems with secure connectivity. You can see the live status of your connected sites, check current and history events, as well as receive Push Notifications in case of event. The Teletek CLOUD also allows you to provide faster and more efficient response and reduce maintenance time and effort.

#### Features

- Remote access, monitoring and maintenance of all your connected iRIS8 or iRIS4 Addressable fire alarm systems
- Manage Multiple Locations from one single point
- Check the system status in real time – loop, zone and device status, Input/output modules activation and status Real time push notification by email of the fire system activity
- Geo-location with Google Maps
- Multiple users per site, different roles
- Simple, intuitive interface
- Increase service efficiency of your business – Efficient maintenance planning, execution, and reporting



### Teletek PRO

Remote connectivity and visibility to Teletek Fire Alarm systems – from any mobile device at anytime, anywhere.

Teletek PRO provides remote access and real-time monitoring and maintenance of iRIS addressable fire alarm systems whenever or wherever you are. You can see the live status of your connected sites, check current and history events, as well as receive Push Notifications in case of event. The application also allows you to provide faster and more efficient response and reduce maintenance time and effort.

#### Features

- Remote access, monitoring and maintenance of all your connected iRIS8 or iRIS4 Addressable fire alarm systems from your smart phone
- Manage Multiple Locations from one single point
- Check the system status in real time – loop, zone and device status, Input/output modules activation and status
- Real time push notification of the fire system activity
- Easily add a panel by scanning a QR code
- Geo-location with Google Maps
- Create multiple users within the same account
- Simple, intuitive interface
- Increase service efficiency of your business – Efficient maintenance planning, execution, and reporting

# Software

## Monitoring & Control



**OBSERVER**  
monitoring software

### Observer

Observer is a software application for monitoring of sites equipped with addressable fire alarm panels produced by Teletek Electronics JSC.

### Features

- Supported panels for operation: IRIS8, IRIS4, IRIS and SIMPO
- Supported operation with up to 32 fire alarm addressable panels installed at different protected sites
- Visualisation of detailed information of a fire alarm detector activated in alarm state - zone number, name of the detector, number of a panel/system, etc
- Monitoring and visualisation of fault events on the site - low charging level of the backup battery, main power supply loss or failure, etc
- Monitoring of the current state and operation mode of the fire alarm panels and SensolIRIS detectors - Normal operation, Fire Alarm, Fault or Warning event
- Allows remote control of the connected fire alarm panels – silencing of the built-in buzzer, silencing of the activated sounders, starting of evacuation, reset of a fire alarm panel
- Allows enabling/disabling of the operation of devices and zones
- Supervised operation using different levels for user access - Regular users and Administrators
- Allows import of architectural plans and drawings of the site as graphical images and pictures (JPG, BMP, PNG, TIF, GIF)
- Placing images of the used devices (detectors, sounders, modules, video surveillance equipment, etc) at the exact location of installation
- Keeps printable event log
- The event log file can be printed or reviewed with filtering by event types, date and time. The event log file can be also saved as an archive including information about event type with date and time of occurring.
- Data protection by means of passwords with hierarchical access level, according the User responsibilities and using of a hardware key (Dongle)
- Visual and sound signalling in case of fire alarm or fault
- ModBus protocol included



### Advantages

- Integrated video verification with third-party video systems
- Direct ProSTE files import (direct upload of the Device name, Zone name, Panel name and Panel IP address)
- Easy arrangement of the devices on the architectural plant of the site
- Panels control
- Minimum programming and settings
- Intuitive user-friendly interface
- Operation with OS Windows 10 and higher, x64 bits
- Multi language support
- Event audio signalization

# Software

## Programming



### ProSTE Programming Software

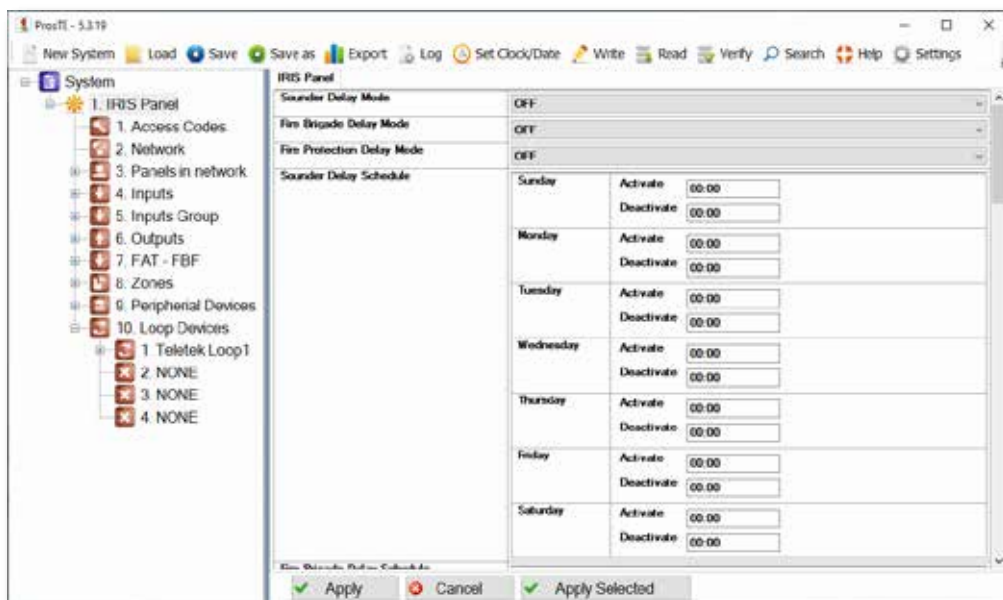
ProSTE is a software package for programming of Teletek Electronics JSC intruder and fire alarm panels. The software allows fast and user-friendly programming to the benefit of the installer. Some of the special features of this software tool are the quick reading the preset panel's configuration, settings and programming the options via convenient user interface, easy recording the new set configuration in the panel. The old, present, and even future configuration of a panel's settings can be saved in a special file format and kept in a data base for archive.

#### Features

- Intuitive and user friendly graphic interface
- Easy programming of all system parameters
- Saves time and effort
- Allows creation of default configurations in TDF (Teletek data files) ready for use on site
- Decreases possibility for mistakes during programming
- No need to remember addresses or use programming manuals
- Download and update available at [www.teletek-electronics.com](http://www.teletek-electronics.com) (requires registration and website administrator verification)
- Multi language support

#### Supported Products

- Eclipse 8+/16/32/99
- BRAVO Next Wireless panel
- IRIS
- iRIS4
- iRIS8
- SIMPO
- IRIS/SIMPO Repeater
- TTE GPRS Standard
- TTE GPRS Simple
- TTE LAN
- TTE Combo
- TP2000 (ver. 8.xx)





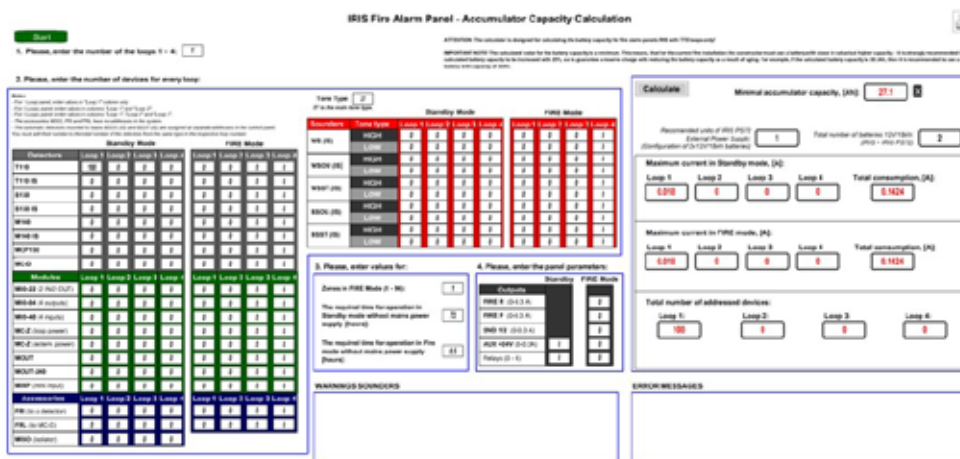
# Software

## Calculators



### IRIS/SIMPO Battery Calculator

The battery calculator provides information on the exact consumption of all devices in the system. As well as the batteries that we need to provide for trouble-free operation of the system for the required period – 72 hours.



### IRIS/SIMPO Loop Calculator

The purpose of the loop calculator is to assist designers in calculating the length and cross section of the cable according to the number of devices set in the project and their total consumption.

The application provides separate sections for setting the number detectors, modules, sounders in the system. The calculations are assisted with schematic diagrams showing the type of the loop connection class A or B.



# Conventional Solutions

Teletek Electronics JSC has traditions in manufacturing of conventional fire alarm solutions, providing full range of panels, detectors and signalling devices.

The most important features of the conventional system are the simplicity, effectiveness, and operational stability. All these features are provided in our conventional fire panel range - MAG series. MAG panels are easy for installation, programming, and maintenance, user-friendly and simple to operate with - that makes the MAG fire panels suitable for home, small and middle office applications.

MAG conventional fire alarm panels are certificated by EN 54-2/4, providing from 2 up to 16 fixed zones. Up to 20 (32 SensoMAG Series) fire detectors can be connected to every fire zone. Unlimited number of call points can be connected to every of the fire zones.

Extending the range Teletek Electronics JSC adds and an extinguishing panel to its portfolio. The IVY has tree conventional zones providing extinguishing in the protected sites.



# Conventional

## Fire Alarm Control Panels

	MAG8Plus	MAG8	MAG4	MAG2
Zones	8-16	8	4	2
Devices	32 per zone*	32 per zone*	32 per zone*	32 per zone*
Double knock	✓	✓	✗	✗
Sounder output	4 (0.3A)	2 (0.5A)	2 (0.3A)	2 (0.3A)
Fire relay	✓	✓	✓	✓
Fault relay	✓	✓	✓	✓
AUX output	Yes (0.3A)	Yes (0.3A)	Yes (0.3A)	Yes (0.3A)
Sounder delays	✓	✓	✗	✗
Instant zone	✓	✓	✗	✗
Indication	LED	LED	LED	LED
Access protection	Key	Key	Key	Key
Plastic box/Metal box	Cover: plastic, Bottom: metal	✓/✗	✓/✓	✓/✓
Zone expander	✓	✗	✗	✗
Sounder expander	✓	✗	✗	✗
LOG module	✓	✓	✗	✗
Relay expander	✓	✓	✗	✗
Battery	1x12V/18Ah	1x12V/7Ah	1x12V/7Ah	1x12V/7Ah
Standard	EN 54-2/4	EN 54-2/4	EN 54-2/4	EN 54-2/4

\* with SensoMAG detectors

# MAG8Plus

## Expandable Conventional Fire Alarm Control Panel

EN 54-2/4



- Expandable 8 to 16 zones
- Up to 32 devices per zone
- Simple programming by jumpers

MAG8Plus maintains from 8 to 16 zones with fire detectors and call points and it is based on a modular principle - a power unit, a control panel, zone/sounder expanders, an indication module and battery space.

MAG8Plus is suitable for vast range of applications - big office buildings, schools, supermarkets, etc.

### Technical Specifications

Main power supply:	230VAC ±10%
Current consumption (mains failure):	260mA*
Auxiliary output:	24VDC/0.3A fuse
Operating temperature:	-5°C to +40°C
Weight (without battery):	~4kg
Dimensions of metal bottom:	441x331x80mm
Dimensions of plastic cover:	461x344x45mm

\* with connected 4 zone expander modules

### Features

Zones:	8, expandable to 16
Devices per zone:	32
Back-up battery:	1, 12V/18Ah
Active EOL for continuous monitoring of inputs:	✓
Sounder outputs:	4, monitored, 0.3A each
Multi language support:	✓
Enclosure box:	Cover - plastic; Bottom - metal
Double knock mode:	✓
Sounders delay:	1-10 min, Programmable
Secure access:	Key

# MAG8

## Conventional Fire Alarm Control Panel

EN 54-2/4



- 8 Fixed hardware zones
- Up to 32 devices per zone
- Simple programming by jumpers

MAG8 maintains 8 fixed zones with fire detectors and call points. The panel has small size, handy cabinet, internal self-testing for technical faults.

Easy for installation and maintenance, user-friendly and simple operation - that makes the MAG fire panels suitable for home, small and middle office applications.

### Technical Specifications

Main power supply:	230VAC ±10%
Current consumption (mains failure):	125mA
Auxiliary output:	24VDC/0.3A fuse
Internal resistance of the battery:	<0.45 Ohm
Operating temperature:	-5°C to +40°C
Weight (without battery):	~2.4kg
Dimensions:	340x290x100mm

### Features

Zones:	8, fixed
Devices per zone:	32
Back-up battery:	1, 12V/7Ah
Active EOL for continuous monitoring of inputs:	✓
Sounder outputs:	2, monitored, 0.5A each
Multi language support:	✓
Enclosure box:	Plastic
Double knock mode:	✓
Sounders delay:	1-10 min, Programmable
Secure access:	Key

# MAG2/4

## Conventional Fire Alarm Control Panel

EN 54-2/4



- 2/4 fixed hardware zones
- Up to 32 devices per zone
- Available in metal installation box

The MAG2 and MAG4 panels have small size, handy cabinet, internal self-testing for technical faults.

Easy for installation and maintenance, user-friendly and simple operation - that makes the MAG fire panels suitable for home, small and middle office applications.

### Technical Specifications

Main power supply:	230VAC ±10%
Current consumption (mains failure):	50mA
Auxiliary output:	24VDC/0.3A fuse
Internal resistance of the battery:	<1.6 Ohm
Operating temperature:	-5°C to +40°C
Weight (without battery):	
MAG2P	~2.1kg
MAG2	~2.7kg
MAG4P	~2.1kg
MAG4	~3.5kg
Dimensions:	
MAG2P	340x290x100mm
MAG2	200x290x80mm
MAG4P	340x290x100mm
MAG4	320x220x80mm

### Features

Zones:	
MAG2	2, fixed
MAG4	4, fixed
Devices per zone:	32
Back-up battery:	1, 12V/7Ah
Active EOL for continuous monitoring of inputs:	✓
Sounder outputs:	2, monitored, 0.3A each
Multi language support:	✓
Enclosure box:	
MAG2/4P	Plastic
MAG2/4	Metal
Secure access:	Key

# Conventional

## MAG Interface Devices



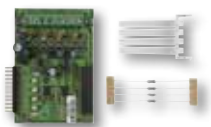
### ML LOG Module

- Optional LOG memory module for MAG8Plus and MAG8 conventional panels
  - Memory for 8190 events
  - Operation keypad with 4 buttons
  - LCD display with backlight
  - Multi language menus
- 



### MR8

- Compatible with MAG8Plus and MAG8 conventional panels
  - 8 relay expander module
  - 1A/12V or 0.5A/24V
- 



### MS4

- Compatible with MAG8Plus conventional panel
  - 4 sounder outputs expander module
- 



### ME4

- Compatible with MAG8Plus conventional panel
- 4 zone expander module



# Conventional Extinguishing Panel

EN 54-2/4  
EN 12094-1



- 2 zones for extinguishing
- 1 fixed conventional zone
- Up to 32 devices per zone

IVY is designed for using together with systems for gas, powder, aerosol, water and other types of active extinguishing. Automatic and manual operation modes, allow the operators to choose the extinguishing process control. The IVY conventional panel is designed for extinguishing in one zone and can operate with solenoids, pressostats and other kind of actuators.

## Technical Specifications

Main power supply:	110-230VAC ±10%
Frequency:	47-60Hz
Electrical output:	26VDC; 1.5A
Consumption:	0.3A@230VAC; 0.7A@110VAC
Internal resistance of the battery:	<0.3 Ohm
Operating temperature:	-5°C to +40°C
Weight (without battery):	~3.2kg
Dimensions:	324x314x82mm

## Features

Zones:	3 (2 for extinguishing + 1 conventional fire alarm)
Devices per zone:	32
Back-up battery:	2, 12V/7Ah (serial connection)
Sounder outputs: (monitored, potential)	2, 0.3A each
Extinguishing output: (monitored, potential)	1A@5min/3A@20ms
Inputs: (monitored)	6
Inputs: (unmonitored, relay)	3
Inputs, OC type: (unmonitored)	4
Display:	2-digit, 7-segment, LED
Multi language support:	✓
Enclosure box:	Metal
Place for sticker or logo:	38x78mm



# Conventional

## IVY Interface Devices



### IVY ML

- Optional LOG memory module for IVY panel
  - Built-in mounting into the panel's box
  - Memory for 1000 events
  - Operation keypad with 4 buttons
  - LCD display with backlight
  - Multi language menus
- 



### SensoMAG MRB50

- Manual Release Button
  - For activation of the extinguishing
  - Protective transparent cover
  - Resettable flexible element
  - Color - yellow
- 



### SensoMAG MRB50

- Emergency Stop Button
- For emergency stop of the gas extinguishing system
- Protective transparent cover
- Color - blue

# Conventional Detectors



## Sensomag F10

EN 54-5

- Fixed heat detector
- Detects temperatures over 60°C, class\* A2/S
- Digital processing algorithm
- LED indication with 360° visibility
- Sensor status indication on every 8 seconds
- Compatible with standard bases B24, B24-HP, B24D, B24RD, B12L/U



## Sensomag F10B

EN 54-5

- Fixed heat detector
- Detects temperatures over 75°C, class\* B/S
- Digital processing algorithm
- LED indication with 360° visibility
- Sensor status indication on every 8 seconds
- Compatible with standard bases B24, B24-HP, B24D, B24RD, B12L/U



## Sensomag R20

EN 54-5

- Rate-of-rise heat detector
- Detects temperatures above 58°C or rapid change in temperature for a period of time, class\* A1/R
- Digital processing algorithm
- LED indication with 360° visibility
- Sensor status indication on every 8 seconds
- Compatible with standard bases B24, B24-HP, B24D, B24RD, B12L/U



## Sensomag S30

EN 54-7

- Optical-smoke detector
- Auto temperature compensation
- Digital processing algorithm
- LED indication with 360° visibility
- Sensor status indication on every 8 seconds
- Rubber gasket ring for increased protection of the smoke chamber
- Compatible with standard bases B24, B24-HP, B24D, B24RD, B12L/U



## Sensomag M40

EN 54-5  
EN 54-7

- Combined detector (Optical-smoke and Rate-of-rise), class\* A1/R
- Auto temperature compensation
- Digital processing algorithm
- LED indication with 360° visibility
- Sensor status indication on every 8 seconds
- Rubber gasket ring for increased protection of the smoke chamber
- Compatible with standard bases B24, B24-HP, B24D, B24RD, B12L/U

\* Category, according EN 54-5:2017+A1:2018

# Conventional

## Detectors



### SensoMAG F10A Relay

EN 54-5

- Fixed heat detector
- Built-in relay 80mA
- Detects temperatures over 60°C, class\* A2/S
- Digital processing algorithm
- LED indication with 360° visibility
- Sensor status indication on every 8 seconds
- Compatible with standard bases B24, B24-HP



### SensoMAG F10B Relay

EN 54-5

- Fixed heat detector
- Built-in relay 80mA
- Detects temperatures over 75°C, class\* B/S
- Digital processing algorithm
- LED indication with 360° visibility
- Sensor status indication on every 8 seconds
- Compatible with standard bases B24, B24-HP



### SensoMAG R20 Relay

EN 54-5

- Rate-of-rise heat detector
- Built-in relay 80mA
- Detects temperatures above 58°C, class\* A1/R
- Digital processing algorithm
- LED indication with 360° visibility
- Sensor status indication on every 8 seconds
- Compatible with standard bases B24, B24-HP



### SensoMAG S30 Relay

EN 54-7

- Optical-smoke detector
- Built-in relay 80mA
- Auto temperature compensation
- Digital processing algorithm
- LED indication with 360° visibility
- Sensor status indication on every 8 seconds
- Rubber gasket ring for increased protection of the smoke chamber
- Compatible with standard bases B24, B24-HP



### SensoMAG M40 Relay

EN 54-5  
EN 54-7

- Combined detector (Optical-smoke and Rate-of-rise), class\* A1/R
- Built-in relay 80mA
- Auto temperature compensation
- Digital processing algorithm
- LED indication with 360° visibility
- Sensor status indication on every 8 seconds
- Rubber gasket ring for increased protection of the smoke chamber
- Compatible with standard bases B24, B24-HP

\* Category, according EN 54-5:2017+A1:2018

# Conventional

## Bases



### SensoMAG B24

- Standard 24V base for SensoMAG detectors
- Low profile design
- Compatible with fire panels with alarm state current up to 15mA
- Dimensions 102x18mm



### SensoMAG B24-HP

- Standard 24V base for SensoMAG detectors
- High profile design
- Suitable for mounting on rough surfaces
- Compatible with fire panels with alarm state current up to 15mA
- Dimensions 103x25mm



### SensoMAG B24D

- Standard 24V base with Schottky diode for SensoMAG detectors
- Low profile design
- Detects removal of detector from base
- Compatible with fire panels with alarm state current up to 15mA
- Dimensions 102x18mm



### SensoMAG B24RD

- Standard 24V base with Schottky diode and increased alarm state current for SensoMAG detectors
- Low profile design
- Detects removal of detector from base
- Compatible with fire panels with alarm state current from 45mA and higher
- Dimensions 102x18mm



### SensoMAG B12L/U

- Relay 12V base
- Low profile design
- For application in intruder alarm system
- Latched/Unlatched mode
- Dimensions 102x18mm

# Conventional

## Manual Call Points



### SensoMAG MCP50

EN 54-11

- Manual call point
- Surface mounting
- Resettable flexible element
- Type (according to EN 54-11) - A
- LED indication
- Special test tool for resetting after alarm event
- Optional protective plastic cover
- IP40



### SensoMAG MCP50 IP67

EN 54-11  
EN 60529

- Waterproof protected manual call point
- Surface mounting
- Resettable flexible element
- Type (according to EN 54-11) - A
- LED indication
- Special test tool for resetting after alarm event
- Protective plastic cover
- Cable glands and o-ring protected sealant
- IP67 according EN 60529



### Call Point Plastic Cover Set

- Set of 5 pcs. protective plastic cover for manual call-points
- Compatible with SensoMAG MCP50 and SensoMAG MCP50 IP67

# Conventional

## Indoor Sounders/Strobes



### SF50

EN 54-3

- Fire alarm piezo sounder with LED strobe
- Sound output - 102dB
- Plastic case
- Power supply - 24V
- Two-wire connection
- Current - 75mA
- Color - red



### SF100 WSST

EN 54-3  
EN 54-23

- Fire alarm piezo sounder with LED strobe
- Two sound levels: High- 100dB; Low - 92dB
- Max. consumption 25mA@24VDC
- 32 Sound types
- 2 Outputs for evacuation and fire alarm
- Two-wire connection
- Color - white, transparent
- Coverage volume: Open class



### SF100 RSST

EN 54-3

- Fire alarm piezo sounder with LED strobe
- Two sound levels: High- 100dB; Low - 92dB
- Max. consumption 25mA@24VDC
- 32 Sound types
- 2 Outputs for evacuation and fire alarm
- Two-wire connection
- Color - red, transparent



### SF100 RSND

EN 54-3

- Fire alarm piezo sounder
- Two sound levels: High- 100dB; Low - 92dB
- Max. consumption 22mA@24VDC
- 32 Sound types
- 2 Outputs for evacuation and fire alarm
- Two-wire connection
- Color - red



### SF100 WSND

EN 54-3

- Fire alarm piezo sounder
- Two sound levels: High- 100dB; Low - 92dB
- Max. consumption 22mA@24VDC
- 32 Sound types
- 2 Outputs for evacuation and fire alarm
- Two-wire connection
- Color - white

# Conventional

## Indoor Sounders/Strobes



### Hera WSST

- Fire alarm wall sounder and strobe
- Piezo sounder, LED strobe
- Sound level: 95-104dB
- Max. consumption 85mA@24VDC
- Two-wire connection
- Color - white, transparent
- Coverage volume: Open class

EN 54-3  
EN 54-23



### Hera RSST

- Fire alarm wall sounder and strobe
- Piezo sounder, LED strobe
- Sound level: 95-101dB
- Max. consumption 85mA@24VDC
- Two-wire connection
- Color - red, transparent

EN 54-3



### Hera RSND

- Fire alarm sounder
- Piezo sounder
- Sound level: 102dB
- Max. consumption 55mA@24VDC
- Two-wire connection
- Color - red

EN 54-3



### Hera WSND

- Fire alarm sounder
- Piezo sounder
- Sound level: 102dB
- Max. consumption 55mA@24VDC
- Two-wire connection
- Color - white

EN 54-3

# Conventional

## Outdoor Sounders/Strobes



### SF200

- Fire alarm sounder
- LED strobe
- 1 status indicator
- Sound output - 96dB
- Power supply - 20-30VDC
- Plastic case
- IP54 protection for the electronic part
- Current consumption - <17mA@24V
- Color - red

EN 54-3



### SF300

- Fire alarm sounder
- IP44 protection for the electronic part
- Type B
- LED strobe
- Two piezo sounders
- Sound output - 95dB@1m
- Power supply - 20-30VDC
- Plastic case
- Current consumption - <28mA@24VDC
- Color - red

EN 54-3



# Accessories

## Fire Alarm Systems



### FRL-1

- Remote 24V fire indicator
- Repeats the LED signalization status of up to 3 SensoMAG or SensoIRIS detectors
- 1 input



### Deep Base W/R

- Deep base accessory
- Color - white (RAL 9016)/ red (RAL 3020)
- Application for mounting on rough surfaces, pipelines, floating ceilings, etc.



### Wet Base

- Waterproof deep base accessory
- Compatible for mounting with SensoIRIS and SensoMAG standard bases
- Color - white (RAL 9016)
- For mounting into difficult and harsh environments, and areas with high humidity
- IP42



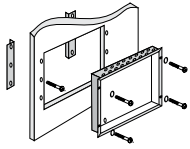
### Fireray One

EN 54-12

- Reflective smoke beam detector
- Auto-alignment protocol
- Operating voltage: 14 - 36VDC
- Operating current: 5mA
- Low current consumption
- Signal output: Individual Alarm and Fault relays (VFCO) 2A @ 30 VDC
- Operating distance - up to 120m:
  - 5-50m (one reflector is required);
  - 50-120m (4 reflectors are required).
- Suitable for installation into large and small places
- IP55
- Certified to EN 54-12

# Accessories

## Fire Alarm Systems



### MAG8Plus FML Kit

- Kit for flush mounting of MAG8Plus conventional fire alarm panel
- For use on 25 mm thick dry wall
- Includes: 2 hangers, mounting screws



### IRIS FML Kit

- Kit for flush mounting of iRIS8 S, iRIS8 Ext, iRIS4 addressable fire alarm panels
- For use on 25 mm thick dry wall
- Includes: metal bottom and decorative metal frame, mounting screws
- Color - grey, RAL7011



### PS2410

EN 54-4

- Power supply unit
- 24 VDC/1A
- Metal box
- Transformer

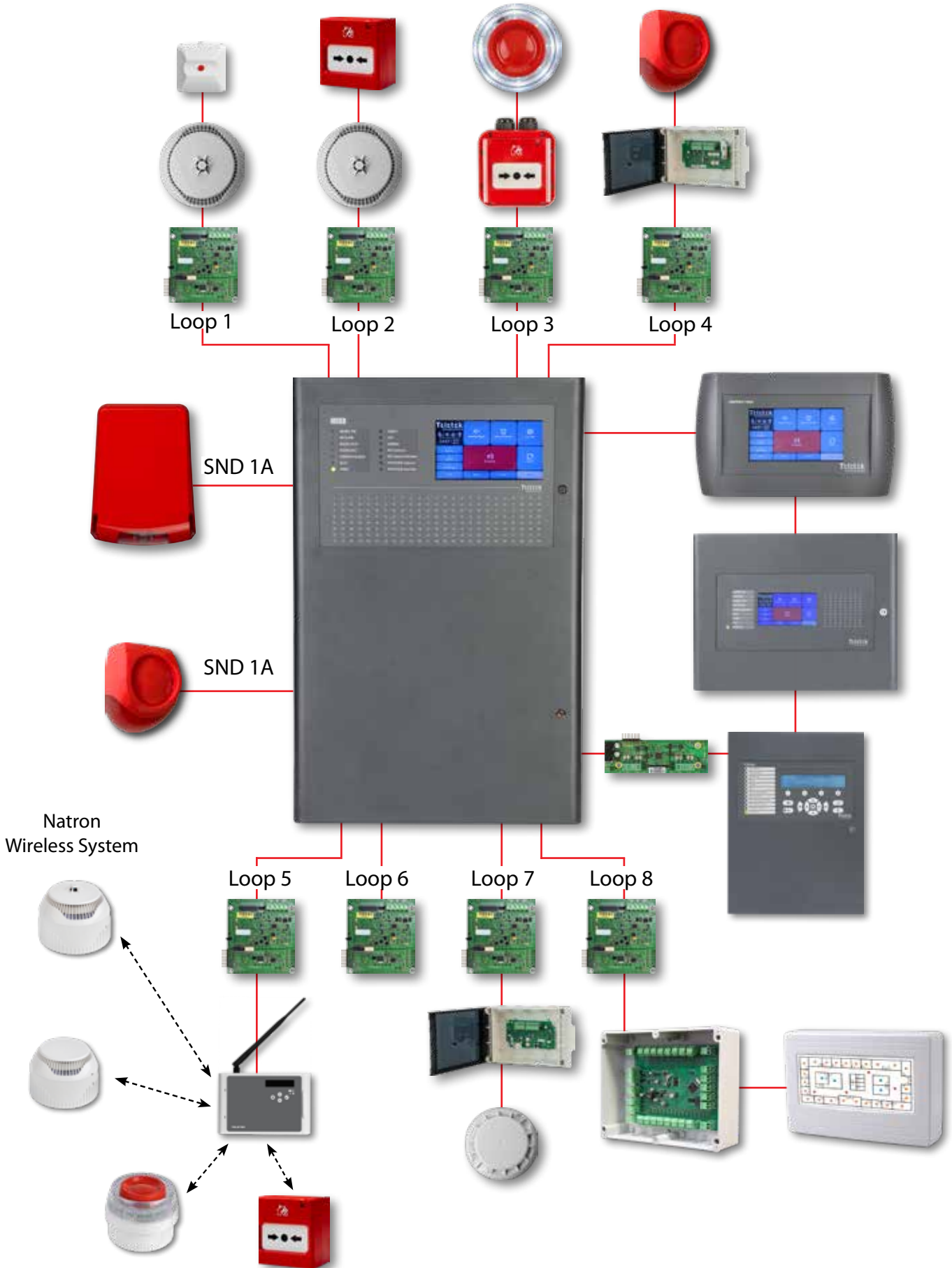


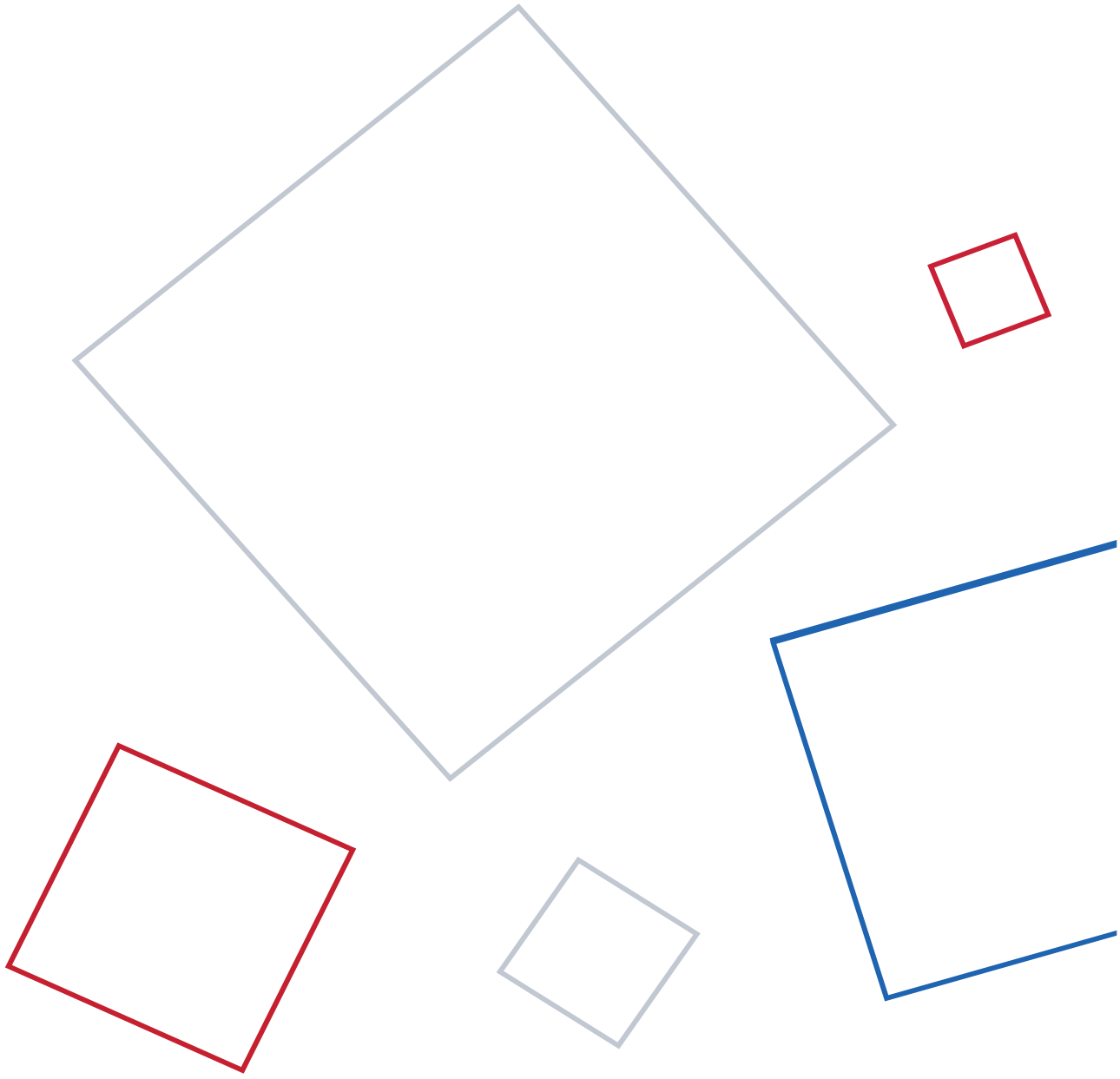
### SB-U

- Universal small plastic box
- For application with ML log module in installation with MAG8 fire alarm panel
- Transparent cover for easy visual inspection

# iRIS8

## System Architecture





**TELETEK**

[www.teletek-electronics.com](http://www.teletek-electronics.com)



02/2024