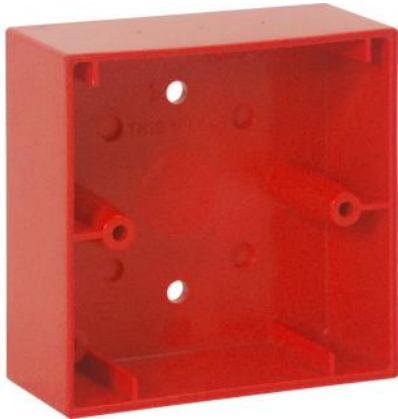


## Surface mount housing for small MCP, red, similar to RAL 3020



### Part-No.: 704980

Red, for manual call points Part No. 804970, 804971 and 804973, for small design electronic modules Part No. 804950/51, 804955/56 with housing Part No. 704950.

### Common technical data

Dimensions

W: 88 mm H: 88 mm D: 36 mm



If the glass pane is replaced with the optionally available plastic pane with reset function, the MCP can be reseted from outside by using the key. Per standard suitable for flush-mounted installation boxes. For the surface mounting of the MCP the base from Part No. 704980 to 704985 is required. Please order separately. Type A definition - direct release acc. to EN 54-11 § 3.4.1 (extract from standard): Manual fire alarm unit, for which the alarm status is automatically set (additional alarm triggering is not required) after the fragile element has been broken or its position has been changed.



Mounting material

### Features:

- Flat design
- Plug-in connection terminals
- Optional terminal
- Triple key function (test, open, reset)
- Detectors that are not ready for operation can be marked with the "Out of order" label by reversing the enclosed glass pane