

N-MC-BB-W

MCP accessory, intelligent manual call point back box, white

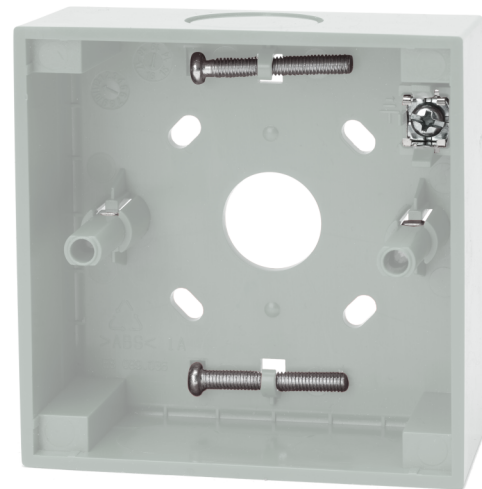
General

The N-MC-BB-W is a surface mount back-box for for DM3000, KAL750 and ZP780 series manual call points. It offers cable entry from behind when used with hidden cable trunking, or cable entry from the top and bottom when surface mount cable trunking is used. Suitable mounting screws to fit the compatible manual call point to the back box are conveniently housed in the base of the box. A screen connection terminal is provided for convenient cable screen connection when used in electricity noisy environments.

Easy to install

Adjustable screw mounting holes allows for perfect alignment of the back box even if the drilled holes are not exactly level. The flexibility of cable entry from the large opening in the rear, or the dust proof knockouts at the top and bottom of the unit greatly enhances the applications possible for fitting in all types of installations. The back box may be rotated through 180° to position the selected entry orientation in the most convenient location at the top or the bottom of the unit.

A perfect fit between the back box and the manual call point front is guaranteed by device alignment guides that avoid misalignment of the back box with the front part, presenting the manual call point as a single aesthetic product on the wall.



Details

- Compatible with quality wall boxes and MCPs
- Rear and side cable entry using a single unit
- Suitable screws provided for MCP fitting
- Screen connection terminal for electrically noisy installations
- Alignment holes for wall mounting allows for perfect horizontal alignment
- Aligns perfectly with the NC-MC series conventional, as well as DM3000, KAL750 and ZP780 series addressable MCPs to provide a smooth aesthetic single unit finish

N-MC-BB-W

MCP accessory, intelligent manual call point back box, white

Especificaciones técnicas

General

Compatibility	Aritech, Kilsen, Ziton manual call points
---------------	---

Eléctrico

Terminals	1 (cable screen)
-----------	------------------

Físico

Dimensiones físicas	87.1 x 87.1 x 35 mm (W x H x D)
---------------------	---------------------------------

Net weight	60 g
------------	------

Color	Blanco (RAL 9003)
-------	-------------------

Mounting type	Montaje en pared
---------------	------------------

Cable entries	3 side, 1 rear
---------------	----------------

Material (caja)	Noryl SE100 (autoextinguible)
-----------------	-------------------------------

Medioambiental

Vandal proof	No
--------------	----

Temperatura de funcionamiento	-25 to +72°C
-------------------------------	--------------

Storage temperature	-25 to +72°C
---------------------	--------------

Relative humidity	10 to 95% noncondensing
-------------------	-------------------------

Entorno	Interior
---------	----------

Regulador

Compliance	REACH, RoHS 2, WEEE
------------	---------------------



Como empresa innovadora, Carrier Fire & Security se reserva el derecho de modificar las especificaciones de los productos sin previo aviso. Para conocer las últimas especificaciones de los productos, visite la Web de es.firesecurityproducts.com o póngase en contacto con su comercial.

Last updated on 15 February 2024 - 9:09