

IP S-SIGHT SERIES

Provision-ISR S-SIGHT series provides you with all that you need for a simple installation. S-Sight cameras guarantee a superior image quality, improved night performance and make an outstanding value for money solution.

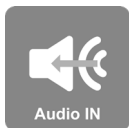


I4-340IPS-MVF

40M IR 4MP MOTORIZED VARI-FOCAL LENS BULLET CAMERA

Equipped with a 2.8-12mm motorized lens, this 4MP bullet camera is designed for medium distance surveillance (up to 40m) in both indoor and outdoor scenarios.

With its great performances, reliability and affordable price I4-340IPS-MVF camera is the perfect solution for any basic installation.



MAIN FEATURES

- 4MP
- 2592×1520 Resolution
- 2.8-12mm Motorized Vari-Focal (94°-35.7°)
- 3D-DNR
- IP67
- Audio in

ANALYTICS

- General Analytics: Camera Tampering
- Standard Analytics: Line Crossing, Sterile Area



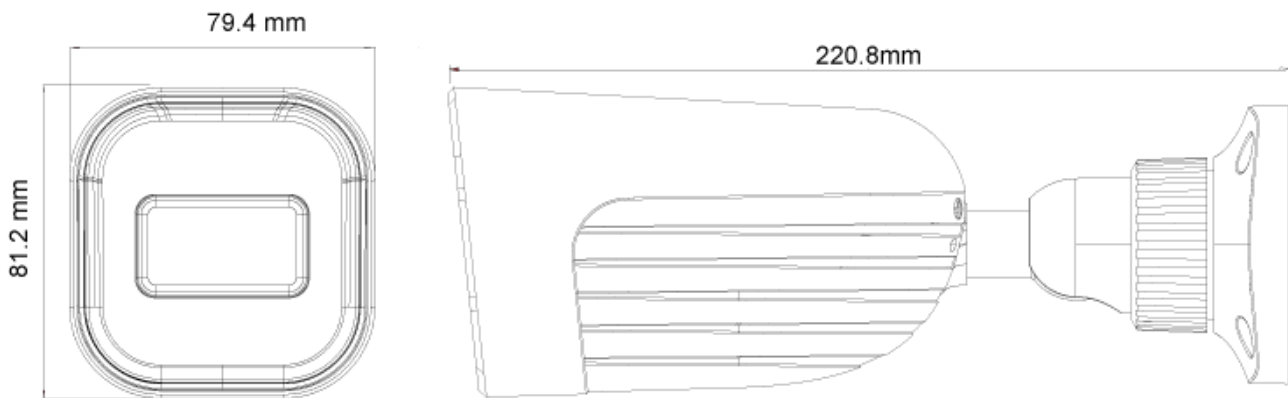
SPECIFICATIONS

| | |
|----------------------|---|
| Image Sensor | 1/2.7" CMOS (16:9) |
| Effective Pixels | 2592×1520 |
| Electronic Shutter | 1/25s ~ 1/100000s |
| Frame Rate | 1-25/30FPS |
| Day & Night | ICR |
| Min. Illumination | Day: 0.1lux / Night: 0.03lux (@F2.0, AGC On) 0lux with IR on |
| Audio compression | G.711A/G.711U |
| Communication | One-way Audio |
| Image Settings | AWB, AGC Adjustable, Exposure Mode (Auto) Sharpness, Saturation, Brightness & Contrast Adjustable |
| Image Enhancement | Digital WDR, BLC, HLC, ROI |
| Noise Reduction | 3D-DNR |
| Image Orientation | Mirror/Flip |
| Privacy Zone | Yes |
| Motion Detection | Yes |
| Analytics | General Analytics: Camera Tampering Standard Analytics: Line Crossing, Sterile Area |
| Video Compression | H.265 / H.264 / MJPEG (Sub-Stream Only) |
| Resolution | 4MP (2560x1440) / 3MP (2304x1296) / 2MP (1920x1080) / D1 / QVGA /CIF |
| Multi-Stream | Master Stream: 4MP (2560x1440) / 3MP (2304x1296) / 2MP (1~30fps) Sub-Stream: 1MP (1~12/15fps) /QVGA/D1/CIF (1~30fps) Third Stream: QVGA/D1/CIF (1~30fps)" |
| Bit rate | 64Kbps ~ 5Mbps@H.265 / 64Kbps ~ 5Mbps@H.264 |
| Encode Mode | VBR/CBR |
| Image Quality | Five levels under VBR; Free adjustment under CBR |
| IR Distance | 40m (2 High Power IR LED) |
| Lens (Field of View) | 2.8-12mm MVF with Auto Focus (94°-35.7°) |

SPECIFICATIONS

| | |
|---------------------|--|
| Iris | Fixed Iris |
| Lens Mount | Ø14 Mount |
| Protection Rate | Water Proof: IP67 |
| Bracket | 3-Axis Bracket |
| Dimensions | 220.8x79.4x81.2mm |
| Weight (gross) | ~650g |
| Network | RJ45 (+PoE) |
| Power | DC Socket |
| Analog Video Output | No |
| Audio Connectivity | Audio Input |
| SD Card | Event/Schedule based Main/Sub-Stream recording (Up to 128Gb) |
| Hard Reset Button | Yes |
| Alarm | No |
| Remote Monitoring | IE Browsing, CMS Software, Provision Cam2 Mobile App |
| User Access | Supports simultaneous monitoring for up to 4 users with multi-stream real time transmission |
| Network Protocol | IPv4, IPv6, TCP, UDP, DHCP, NTP, DDNS, 802.1X, RTSP, Multicast, UPnP, Email, FTP, HTTPS, QoS |
| ONVIF | Yes |
| Ethernet | 100Mbps |
| PoE | Yes |
| Power Supply | DC12V/~780mA / PoE/~7.4W |
| Work Environment | -30°C~60°C, 10%~90% Humidity |
| Junction Box | PR-JB12IP66 - PR-JB12IP64 |

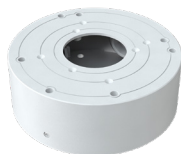
DIMENSIONS



ACCESSORIES



PR-JB12IP66



PR-JB12IP64