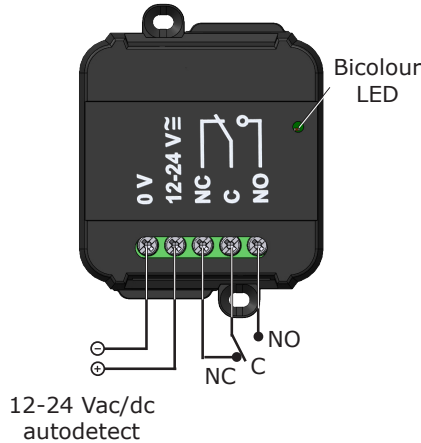


QUICK START GUIDE

1] WIRING

1. Connect your CUBEPOWER receiver to your devices using the relay connection.
2. Connect the receiver to power.



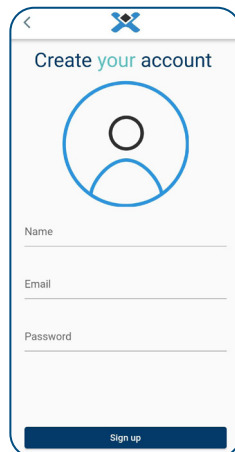
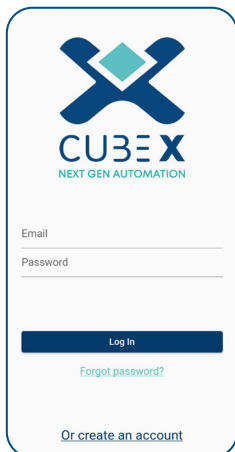
2] SET UP THE INSTALLERCUBE APP

1. Scan or click the QR code below to download the app.



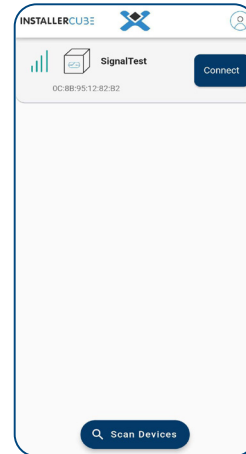
2. Once downloaded, authorise the app to use Bluetooth communication and the GPS localisation.
3. Create your CUBE X account if this is your first time using the app.

Define e-mail address, name and password. A verification e-mail will be sent to your e-mail address.



3] CONNECT TO YOUR CUBEPOWER

1. Press 'Scan Devices'.
2. Select the receiver that appears on the list.



If the receiver doesn't show:

- Ensure you are within a 30m range of the location of the receiver.
- Ensure noone else is connected to the receiver.

3. Enter default passwords.

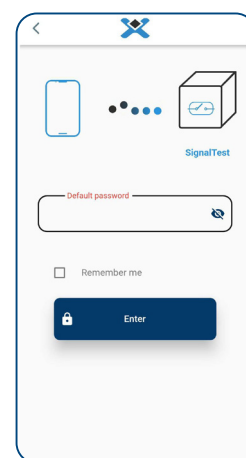
Administrators	11111
Installers	00000

- Administrator: Can set passwords for both installers and administrators.
- Installer: Uses the password set by the Administrator.

Note: The installer cannot change the passwords.



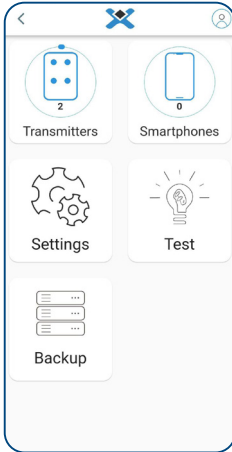
It is highly recommended to change the passwords after the first access to the device.



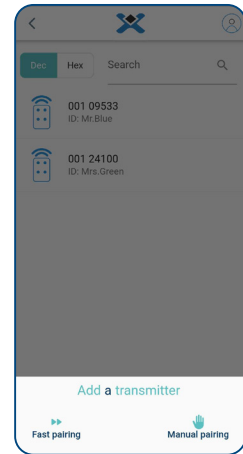
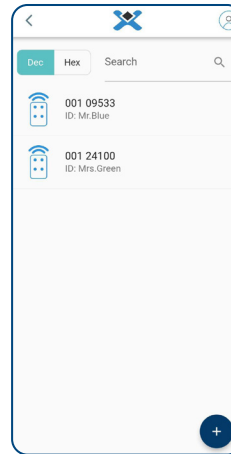
If 'Default Password' appears in red it means, at least one of the passwords have the default value.

4] ADDING YOUR S1 TRANSMITTER

1. On the home page, click on 'Transmitters'.

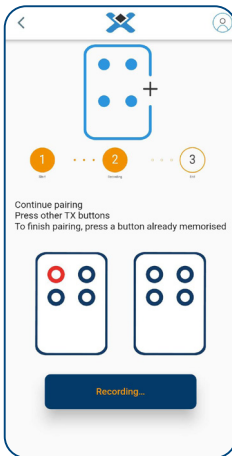


2. Click on the '+' button in the bottom right corner.
3. Select how you want to add your transmitter: Fast Pairing or Manual Pairing.



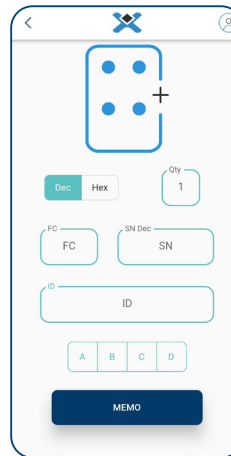
Fast Pairing

The receiver is now in 'listening mode'.



1. Press all the transmitter buttons that you want memorised in the app.
2. To end the listening mode either press an already memorised button or wait 30 seconds.

Manual Pairing



1. Enter the Facility Code and Serial Number (printed on the back of the transmitters), ID and buttons, manually.
2. To add more than one transmitter from a 'block' enter the quantity of transmitters to add.
3. Press 'MEMO'.

You are now all set up!

If you wish to use further features like the smartphone credential and set up the UserCUBE app, download the the full Setup Guide below.

CUBE X
Setup Guide

