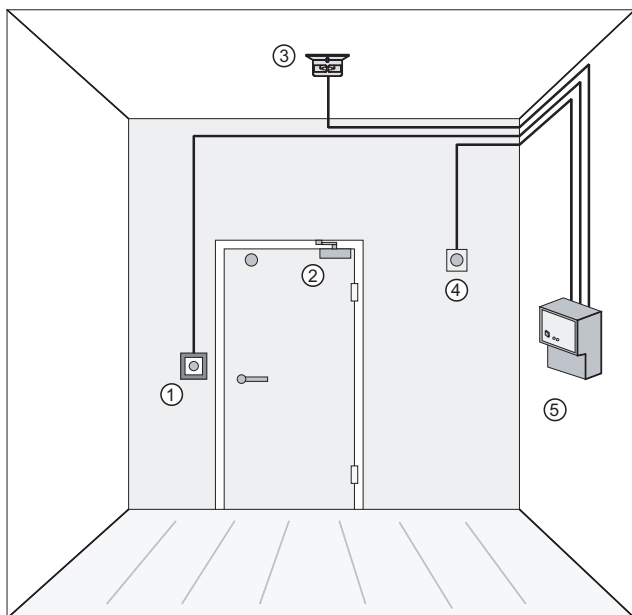


# Electromagnetic Door Holders 24 V



- ▶ Integrated free-running diode with protection against reversed polarity.
- ▶ The corresponding anchor plate is included in the scope of delivery.

## System overview



### Pos. Designation

- 1 'Close door' push button
- 2 Door closer
- 3 Smoke switch O 300/FSA or thermal switch T 300/FSA
- 4 Electromagnetic door holding magnet

5 TSZ 0400 door control unit

## Functions

Door holding magnets are used as automatic door control devices to keep movable doors such as fire doors and other doors open. They must be coupled to a smoke detector system that disconnects the power to the holding unit in the event of a fire, shutting the doors and thus preventing the spread of fire and smoke.

## Regulatory information

Complies with

- EN1155:1997/A1:2002

Region	Regulatory compliance/quality marks	
Germany	VdS	G 212043 GT50R
	VdS	G 212042 GT60R
Europe	CE	GT 50 R
	CPD	0786-CPD-20249 GT050R
	CPD	0786-CPD-20400 GT060R

## Technical specifications

### Electrical

Operating voltage	24 VDC
-------------------	--------

Current consumption	63 mA
Holding strength FMD-GT-60	686 N
Holding strength FMD-GT-50/-SPACE	490 N
Duty cycle	100%

### Mechanical

FMD-GT50-SPACE	
Dimensions (WxHxD) (mm)	
• Magnet	80 x 80 x 485
• Anchor plate	55 x 55 x 18
Weight (g)	1200
Mounting type	Surface mounting on wall, floor and ceiling

FMD-GT50	
Dimensions (WxHxD) (mm)	
• Magnet	121 x 120 x 69
• Anchor plate	55 x 55 x 18
Weight (g)	800
Mounting type	Surface mounting on floor

FMD-GT60	
Dimensions (WxHxD) (mm)	
• Magnet	65 x 93 x 26
• Anchor plate	65 x 65 x 15.5
Weight (g)	500
Mounting type	Surface mounting on wall

### Environmental

Operating temperature	0 °C to +50 °C
IP rating	IP 40

#### Represented by:

**Europe, Middle East, Africa:**  
Bosch Security Systems B.V.  
P.O. Box 80002  
5600 JB Eindhoven, The Netherlands  
Phone: + 31 40 2577 284  
[www.boschsecurity.com/xc/en/contact/](http://www.boschsecurity.com/xc/en/contact/)  
[www.boschsecurity.com](http://www.boschsecurity.com)

**Germany:**  
Bosch Sicherheitssysteme GmbH  
Robert-Bosch-Ring 5  
85630 Grasbrunn  
Tel.: +49 (0)89 6290 0  
Fax: +49 (0)89 6290 1020  
[de.securitysystems@bosch.com](mailto:de.securitysystems@bosch.com)  
[www.boschsecurity.com](http://www.boschsecurity.com)

**North America:**  
Bosch Security Systems, LLC  
130 Perinton Parkway  
Fairport, New York, 14450, USA  
Phone: +1 800 289 0096  
Fax: +1 585 223 9180  
[onlinehelp@us.bosch.com](mailto:onlinehelp@us.bosch.com)  
[www.boschsecurity.com](http://www.boschsecurity.com)

**Asia-Pacific:**  
Robert Bosch (SEA) Pte Ltd, Security Systems  
11 Bishan Street 21  
Singapore 573943  
Phone: +65 6571 2808  
Fax: +65 6571 2699  
[www.boschsecurity.com/xc/en/contact/](http://www.boschsecurity.com/xc/en/contact/)  
[www.boschsecurity.com](http://www.boschsecurity.com)

### Ordering information

**FMD-GT60 Door-hold magnet, wall-mount**  
with an integrated free-running diode, for use as automatic door control devices, surface mounting  
Order number **FMD-GT60 | 2.799.320.504**

**FMD-GT50-SPACE Door-hold magnet, universal**  
with an integrated free-running diode, for wall, floor or ceiling mounting, with trigger key and 45 cm spacer pipe, magnet head swivels through 90°  
Introduction  
Order number **FMD-GT50-SPACE | 2.799.320.539**

**FMD-GT50 Door-hold magnet, floor-mount**  
with an integrated free-running diode, with trigger key  
Order number **FMD-GT50 | 2.799.320.532**

### Accessories

**FMD-F.GT50 Anchor plate, 55mm**  
Standard anchor plate (flexible anchor) of FMD-GT50 Door-hold magnet  
Order number **FMD-F.GT50 | 2.799.320.536**

**FMD-F.GT60 Anchor plate, 65mm**  
Standard anchor plate of FMD-GT60 Door-hold magnet  
Order number **FMD-F.GT60 | 2.799.320.503**