

PARADOX

# **EVOHD+** **User Guide**

**High Security Access System**



## Warranty

For complete warranty information on this product please refer to the Limited Warranty Statement found on our Web site: [www.paradox.com](http://www.paradox.com). Your use of this Paradox product signifies your acceptance of all warranty terms and conditions.

© 2022 Paradox Ltd. All rights reserved. Specifications may change without prior notice. One or more of the following patents may apply: 2,292,187 and RE#39406.

Digiplex, Digiplex EVO, Magellan, and BabyWare are trademarks or registered trademarks of Paradox Ltd. or its affiliates in Canada, the United States and/or other countries. For the latest information on products approvals, such as UL and CE, please visit [www.paradox.com](http://www.paradox.com).

### Limitations of Alarm Systems

It must be understood that while your Paradox alarm system is highly advanced and secure, it does not offer any guaranteed protection against burglary, fire or other emergency (fire and emergency options are only available on certain Paradox models). This is due to a number of reasons, including by not limited to inadequate or improper installation/positioning, sensor limitations, battery performance, wireless signal interruption, inadequate maintenance or the potential for the system or telephone lines to be compromised or circumvented. As a result, Paradox does not represent that the alarm system will prevent personal injury or property damage, or in all cases provide adequate warning or protection.

Your security system should therefore be considered as one of many tools available to reduce risk and/or damage of burglary, fire or other emergencies, such other tools include but are not limited to insurance coverage, fire prevention and extinguish devices, and sprinkler systems.

We also strongly recommend that you regularly maintain your security systems and stay aware of new and improved Paradox products and developments.

### Warning for Connections to Non-Traditional Telephony (e.g., VoIP)

Paradox alarm equipment was designed to work effectively around traditional telephone systems. For those customers who are using a Paradox alarm panel connected to a non-traditional telephone system, such as Voice Over Internet Protocol (VoIP) that converts the voice signal from your telephone to a digital signal traveling over the Internet, you should be aware that your alarm system may not function as effectively as with traditional telephone systems.

For example, if your VoIP equipment has no battery back-up, during a power failure your system's ability to transmit signals to the central station may be compromised. Or, if your VoIP connection becomes disabled, your telephone line monitoring feature may also be compromised. Other concerns would include, without limitation, Internet connection failures which may be more frequent than regular telephone line outages.

We therefore strongly recommend that you discuss these and other limitations involved with operating an alarm system on a VoIP or other non-traditional telephone system with your installation company. They should be able to offer or recommend measures to reduce the risks involved and give you a better understanding.

### Certification

Certification Body: Applica Test and Certification

## Table of Contents

<b>Introduction</b> .....	<b>5</b>
Legend .....	5
<b>Basic Operation Keypads K641+ Series</b> .....	<b>6</b>
Confidential Mode .....	6
LED Assignments .....	6
Auditory Feedback (Beep Tones) .....	6
<b>REM2 Feedback</b> .....	<b>7</b>
Other Indicators .....	7
<b>Partitioned System</b> .....	<b>8</b>
Area Display .....	8
<b>Arming</b> .....	<b>9</b>
Exit Delay Timer .....	9
Regular Arming .....	9
Stay Arming .....	9
Instant Arming .....	9
Force Arming .....	10
Bypass Programming .....	10
Keyswitch Arming .....	11
Auto-Arming .....	11
Disarming .....	12
<b>Disarming</b> .....	<b>13</b>
Entry Delay Timer .....	13
Disarming an Armed System .....	13
Alarm Memory Display .....	13
<b>Access Codes</b> .....	<b>14</b>
System Master Code .....	14
Copy User Options .....	14
User Labels .....	15
Deleting User Access Codes .....	17
Programming User Access Codes .....	17
User Options .....	19
Access Control User Options .....	19
<b>Using Access Control</b> .....	<b>21</b>
Entering & Exiting .....	21
Arming and Disarming with Card .....	21
How Access Control Works .....	21
<b>Trouble Display</b> .....	<b>23</b>
Trouble Display .....	23
Event Record Display .....	24
<b>Additional Features</b> .....	<b>25</b>
Programmable Outputs (PGMs) .....	25
Keypad Settings .....	25
Setting Time & Date .....	25
Programming Chime Zones .....	26
Panic Alarms .....	26
Quick Function Buttons .....	26

<b>VDMP3 Plug-In Voice Dialer .....</b>	<b>27</b>
Calling the VDMP3 (outside line) .....	27
Receiving a Call From the VDMP3 (alarm in system) .....	27
Burglar Alarm Testing .....	27
Fire Alarm Testing .....	27
System Maintenance .....	27
System Test .....	27
<b>Fire and Burglar Alarms .....</b>	<b>30</b>
Standard Fire Zone .....	30
Delayed Fire Zone .....	30
Fire Safety Tips .....	30
Minimizing Home Fire Hazards .....	31
Home Fire Warning System .....	31
Burglar Alarm .....	31
<b>Fire and Burglar Alarms .....</b>	<b>32</b>
Standard Fire Zone .....	32
Delayed Fire Zone .....	32
Fire Safety Tips .....	32
Minimizing Home Fire Hazards .....	33
Home Fire Warning System .....	33
Burglar Alarm .....	33
<b>Basic Operation of the TouchPad TM70/TM50 .....</b>	<b>34</b>
Touchpad Main Screen .....	34
Touchpad Security Functions .....	35
Touchpad Control Devices .....	35
Touchpad Add-on Functions .....	35
Touchpad Personalize .....	36
Touchpad User Codes .....	36
Touchpad Advanced Functions .....	36
Touchpad System Settings .....	36
<b>Appendix A .....</b>	<b>37</b>
<b>Index .....</b>	<b>40</b>

## ***Introduction***

Your EVOHD+ System is an advanced technology security system that will provide you with reliable security protection and powerful features that are easy to use. The elegant and user-friendly keypads will allow you easy access to your security system's functions and information at the touch of a button.

Messages will be displayed differently depending on the keypad you have selected. The 32-character screen on LCD keypads will display messages and menus to guide you through the system's operations. Your installer can even customize the messages on keypads for your home or business.

Since you can communicate your instructions to your system through the keypad, please read this manual carefully and have your installer explain basic system operation.

## **Legend**

Note: Indicates a warning, important note, useful information, or a tip.

[TEXT]: *Indicates information that must be entered on the keypad.*

## Basic Operation Keypads K641+ Series

### Confidential Mode

Your installer can program keypads to hide the status of your system automatically by changing the keypad to Confidential Mode.

In Confidential Mode:

- The zones and status messages will NOT be displayed
- The indicator lights will NOT illuminate
- Depending on how your keypad was programmed by your installer, you must either press a button or enter your user access code to illuminate the indicator lights and activate Normal Mode.

### LED Assignments

The following sections will introduce you to the functions of the buttons, lights, and messages on your keypad.

Figure 1: LCD Keypad Basic Overview

#### AC Light:

- ON = AC power
- OFF = Power failure

#### STATUS Light:

##### When Green:

- ON = All zones are closed.
- OFF = One or more zones are open.
- FLASH = Exit Delay in progress

##### When Red:

- ON = Area(s) armed
- OFF = Area(s) disarmed
- FLASH = System in Alarm



The LCD screen will guide you with detailed messages.

Use the arrow buttons to scroll through the current menu when the arrows appear in the LCD screen.

### Auditory Feedback (Beep Tones)

When you enter information on the keypad, the keypad will guide you with beep tones to communicate the acceptance or rejection of your entries.

**Confirmation Beep:** When an operation (e.g., arming/disarming) is successfully entered or when the system switches to a new status/mode, the keypad emits an intermittent beep tone ("BEEP-BEEP-BEEP-BEEP").

**Rejection Beep:** When the system reverts to a previous status, or when an operation is incorrectly entered, the keypad emits a continuous beep tone ("BEEEEEEEEEP").

## REM2 Feedback

If your system includes the Wireless Zone Expansion module (RTX3), it will be able to support the Two-Way Remote Control (REM2). This remote allows you to change the status of the system, and it also provides visual and auditory feedback.

Table 1: Full/Force Arming Indicators

Action	LED Sequence	Auditory Sequence
Disarming	Green on	TWO BEEPS
Exit delay	Red / green slow flash	CONFIRMATION BEEP
Arming / Entry Delay	Red on	CONFIRMATION BEEP
Alarm	Red fast flash	ALARM BEEP

Table 2: Stay Arming Indicators

Action	LED Sequence	Auditory Sequence
Disarming	Green on	TWO BEEPS
Exit delay	Yellow / green slow flash	CONFIRMATION BEEP
Arming / Entry Delay	Yellow on	CONFIRMATION BEEP
Alarm	Red fast flash	ALARM BEEP

Note: To see correct indications with REM 2 you must press the “i” in the middle of the remote. This will show the correct status.

## Other Indicators

Table 3: Other Indicators

Action	LED Sequence	Auditory Sequence
PGM on/off	Yellow on	CONFIRMATION BEEP

## Partitioned System

Your installer can set your keypad to recognize separate protected areas. A separated system is called a partitioned system, which can be useful in situations where shared security systems are more practical. For example, a company that has both an office and a warehouse area, can arm and disarm each area separately while controlling access to each area. Therefore, one person may have access to only one area, whereas another person may have access to all areas. Access to the areas is determined by the User Access Code.

### Area Display

The Area Status Display enables you to see the status of the individual areas within a partitioned system. Your installer can partition the system into separate areas.

To view the status of the areas:

1. Enter your [ACCESS CODE], and then press the [1] button.
2. Press the button corresponding to the area (e.g. 1, 2,...8), or use the [▲] and [▼] buttons and press [ENTER] when the area you want to view appears on the screen.
3. Press [CLEAR] to exit.

In Area Status Display mode, the following information will scroll on the LCD screen:

- Ready: if all zones in the selected area are closed.
- Not ready: if zones in the selected area are open.
- Front Door Open: if there is an open zone within that area.
- Trouble(s): (<italic>section ) if a trouble has occurred.
- Alarms in Memory: (<italic>section ) if an alarm has occurred.
- Armed; Force Armed; Instant Armed; Stay Armed: displays the arming status of the selected area.

In Area Status Display, the following will illuminate for the area selected:

- The area lights (A1, A2, A3, and A4) if the associated area is armed. For example, if you have selected area 3 and it is currently armed, A3 will illuminate.
- The numerical light(s) representing any open zone(s) in a corresponding area or areas.
- The Mem action light if any alarms have occurred.
- The Trbl action light if any troubles are occurring.
- The Stay action light if the area is Stay or Instant Armed.
- The Force action light if the area is Force Armed.
- The Byp action light if zones are bypassed.



## **Arming**

When your system is armed, it can respond to any breach in the protected zones by causing an alarm and sending a report to your monitoring station.

### **Exit Delay Timer**

When you arm your system, it will trigger the Exit Delay Timer to provide you with enough time to exit the protected area before the system is armed.

### **Regular Arming**

This method is used for the everyday arming of your system. All zones within the protected area must be closed to Regular arm the system.

To Regular arm the system:

1. Enter your **[ACCESS CODE]**.
2. Press the **[ARM]** button.
3. If you have access to more than one area, select the area(s) you wish to Regular arm (refer to *<italic>*section ).

### **Stay Arming**

Stay arming will partially arm your system to permit you to remain in your home or office by arming the outer zones (perimeter) of the protected area (e.g. doors and windows).

To Stay arm:

1. Enter your **[ACCESS CODE]**.
2. Press the **[STAY]** button.
3. If you have access to more than one area, select the area(s) you wish to Stay arm (refer to *<italic>*section ).

### **Instant Arming**

This feature is the same as Stay arming except that there is no Entry Delay. Therefore, any armed zone that is breached will immediately generate an alarm.

To Instant arm:

1. Enter your **[ACCESS CODE]**.
2. Press the **[5]** button.
3. If you have access to more than one area, select the area(s) you wish to Instant arm (refer to *<italic>*section ).

## Force Arming

Force arming allows you to quickly arm your system when zones are open. However, once the open zone is closed, your system will then arm that zone as well.

To Force arm:

1. Enter your [ACCESS CODE].
2. Press the [FORCE] button.
3. If you have access to more than one area, select the area(s) you wish to Force arm (refer to <italic>section ).

## Bypass Programming

You can bypass certain zones when you arm the protected area(s). When a zone is bypassed, it will be ignored the next time your system is armed. Once your area is disarmed, the system will unbypass the zone.

To Bypass a zone:

1. Enter your [ACCESS CODE].
2. Press the [BYP] button.
3. Enter the zone number (e.g. 01, 02,...96), or use the [▲] and [▼] buttons and press [BYP] once the zone you want to bypass appears on the screen. If ~~eliding~~ *eliding*, the *byp* light does not appear on the screen and the keypad emits a rejection beep, you may not have access to bypass that zone.
4. Repeat step 3 until all zones you want to bypass have been selected.
5. Press the [ENTER] button to save and exit.

To view all bypassed zones.

1. Enter your [ACCESS CODE].
2. Press the [BYP] button.
3. Scroll through the zones using the [▲] and [▼] buttons to view zone status. (LCD Keypads)

Note: In order to bypass a zone, the following conditions must be met:

- The zone must have the Bypass option programmed by your installer.
- The Bypass option must be enabled in your User Options.
- Your user access code must have access to the zone's Area Assignment.
- The zone's area must be disarmed before the zone can be bypassed.

**Warning: Fire Zones cannot be bypassed.**

## Bypass Recall

Bypass Recall reinstates the zones that were bypassed the last time your system was armed.

To activate Bypass Recall:

1. Enter your [ACCESS CODE].
2. Press the [BYP] button.

3. Press the **[MEM]** button.  
Zones bypassed the last time your system was armed are bypassed.
4. Press the **[ENTER]** button to save and exit.

### One-Touch Buttons

If enabled by your installer, you can access the following features without using your user access code by pressing and holding the desired One-Touch button.

Table 4: One Touch Button

Button	Feature
[ARM]	<b>Regular arm</b>
[STAY]	<b>Stay arm</b>
[FORCE]	<b>Force arm</b>
[BYP]	<b>Bypass Programming</b>
[DISARM]	<b>Disarm a Stay/Instant armed area</b>
[5]	<b>Instant arm</b>
[6]	<b>Change display settings</b>
[7]	<b>View Event Record display (LCD Keypads only)</b>

### Keyswitch Arming

A key can be used to arm and disarm your system using two forms of keyswitches. With a Maintained Keyswitch, place the key in the "ON" position to arm your system, and place the key in the "OFF" position to disarm your system. With a Momentary Keyswitch, place the key in the "ON" position briefly then place it back in the "OFF" position to arm the system. Repeat this process to disarm with a Momentary Keyswitch.

### Auto-Arming

If enabled by your installer, you can set the time that an area will arm itself automatically.

#### Timed Auto-Arming

Your installer can set Timed Auto-Arming to function in either Force or Stay arming mode. A sixty-second (default value) Exit Delay sequence will begin prior to your system automatically arming itself at the programmed time.

To set the Auto-Arming timer:

1. Enter your **[ACCESS CODE]**.
2. Press the **[0]** button.
3. Press the **[MEM]** button.
4. If you have access to more than one area, press the area's number, or use the **[▲]** and **[▼]** buttons and press the **[ACC]** button when the area you want to program appears on the screen.
5. Enter the time you want the area to be armed according to the 24-hour clock (e.g. 9 a.m. is 09:00 and 9 p.m. is 21:00).
6. Press the **[ENTER]** button to save and exit.

## No Movement Auto-Arming

Your system can be programmed to send a report to your monitoring station and/or arm the system if there is no activity in the area during a specified period of time. Your installer can set No Movement Auto-Arming to function in either Regular or Stay arming mode.

When your system is disarmed, it deactivates any alarms in progress, and it deactivates the zones so the alarm will not be triggered if zones are breached.

## Disarming

### Entry Delay Timer

Your installer will program designated entry points (e.g. the front door) with an Entry Delay Timer. This delay gives you time to enter the armed premises and enter your code to disarm your system before the alarm is triggered.

### Disarming an Armed System

You can only disarm an area to which your user access code is assigned. User access codes with the "Arm Only" (*section*) option enabled cannot disarm an armed system.

To disarm the system:

1. Enter your **[ACCESS CODE]**.
2. Press the **[DISARM]** button. If you have access to more than one area, select the area(s) you wish to disarm (refer to *section*).

To disarm a system in alarm:

1. Enter your **[ACCESS CODE]**.
2. In the case of a false alarm, call your monitoring station quickly to advise them of the false alarm.

**Warning:** In the case of a burglar alarm, leave the premises and call the Police from a safe location.

### Alarm Memory Display

When an alarm occurs in a zone:

- The area and zone (e.g. Alarm Area 1 - Front Door) are displayed / zone's LED flashes even when the system is armed. The notification continues until disarming, even if the zone is restored.
- The alarm memory will be erased after the next alarm occurs and a valid code has been entered.

To view the alarms that occurred the last time the system was armed:

1. When the system is disarmed, the LCD keypad's screen will display **MEM** in the top right corner.
2. Press the **[MEM]** button.  
Each zone that was breached while armed will appear below **MEM**.  
The *MEM* action light will flash and the numerical light(s) for each zone whose alarm was triggered will illuminate.
3. Press the **[CLEAR]** button to exit the Alarm Memory Display.

## Access Codes

Access Codes allow access to the system. Your system supports up to 999 user access codes. Codes are given a User Number between 002 and 999 (User Number 001 is the System Master Code). Your installer will program user access codes to be four, six, or variables of one to six digits in length. Each digit can be any value between zero and nine. If your installer programmed your system to accept a variable code length, you have to press the **[ENTER]** button after entering your user access code.

### System Master Code

The System Master Code will give you access to all the features available on your system, as well as the ability to add, modify, or delete any user access codes. We suggest that you change this code to prevent others from accessing and changing options without authorization. Your installer can set the System Master Code to be either 4 or 6 digits in length.

To change the System Master Code:

1. Enter the current **[SYSTEM MASTER CODE]** (Default 1234 for 4 digit code; 123456 for 6 digit code).
2. Press the **[0]** button.
3. Press the **[ACC]** button.
4. Enter the numbers **[001]**.
5. Enter a **[NEW CODE]**.
6. Press the **[ENTER]** button to save and **[CLEAR]** to exit.

**Warning:** The System Master Code has access to all Access Control doors and all Access Control features at all times. Only the card's serial number and the choice of arming method can be changed. If the other options are manually changed, the System Master Code will immediately revert to its original programming.

Note: You can assign a label (name) to a user access code at any point during the "Programming User Access Code" process. Refer to *<italic>section* to assign a User Label.

### Copy User Options

This feature allows you to copy the User Options, Access Control Options, and Area Assignments from one user access code to another. All User Options are copied except the User Code, Card Assignment, and User Label.

To copy user options:

1. Enter your **[ACCESS CODE]** (User access code with Master feature).
2. Press the **[0]** button, and then the **[ACC]** button.
3. Enter the 3-digit User number you wish to copy TO.
4. Press the **[MEM]** button.
5. Enter the 3-digit User number you wish to copy FROM.
6. Enter a user code. If the user code is of variable length, press the **[ENTER]** button after entering the user code. If necessary, assign an Access card (step 13 in *<italic>section*) and User Label (*<italic>section*).
7. Press **[ENTER]** to save and exit.

## User Labels

User labels personalize user access codes and can be assigned by pressing **[ENTER]** at any point after step 4 during the programming of user access codes (refer to *<italic>*section ). For Example, LCD keypads can display *Mrkg Vpdk Vchfw Dfwrq*.

To program a user label:

1. Enter your **[ACCESS CODE]** (User access code with Master feature).
2. Press the **[0]** button, and then the **[ACC]** button.
3. Enter the 3-digit User number you wish to label.
4. Press the **[ENTER]** button twice. the first time you will get to REMOTE control configuration the second time you will get to User Label.
5. Type the desired characters as detailed in *<italic>*section and *<italic>*section .
6. Press the **[▲]** button to move the cursor to forward.
7. Press the **[▼]** button to move the cursor to back.
8. Repeat steps 2 and 3 until the desired label is complete.
9. Press the **[ENTER]** button to save and exit.

## Keypad Buttons

Every numeric button on the LCD keypads is assigned a set of letters. To obtain the desired letter using the numeric buttons on your keypad, press the button until the desired letter appears on the screen. For example, if you wanted to enter the letter "C" you would press the [1] button three times (refer to table on page 15). If using a Hebrew keypad, refer to Table 9 in Hebrew Special Characters on page 38. If using a Russian keypad, refer to Table 11 in Russian Special Characters on page 39. If using a Greek keypad, refer to Table 13 in Greek Special Characters on page 40.

Table 5: Keypad Letter Assignments

Key	Press Key Once	Press Key Twice	Press Key Three Times
[1]	A	B	C
[2]	D	E	F
[3]	G	H	I
[4]	J	K	L
[5]	M	N	O
[6]	P	Q	R
[7]	S	T	U
[8]	V	W	X
[9]	Y	Z	

## Special Function Keys

**[STAY]** = Insert Space

Pressing the **[STAY]** key inserts a blank space in the current cursor position.

**[FORCE]** = Delete

Pressing the **[FORCE]** key will delete the character or blank space found at the current cursor position.

**[ARM]** = Delete Until the End

Pressing the **[ARM]** key will delete all characters and spaces to the right of the cursor and at the cursor's position.

**[DISARM]** = Numeric Keys / Alphanumeric Keys

Every time the **[DISARM]** key is pressed it will toggle from numeric keys to alphanumeric keys and vice versa.

Numeric: Keys **[0]** to **[9]** represent numbers 0 to 9.

**[BYP]** = Lower Case / Upper Case

Every time the **[BYP]** key is pressed it will toggle the case setting from lower to upper case and vice versa.

**[MEM]** = Special Characters

After pressing the **[MEM]** key, the cursor will turn into a flashing black square. Using table 6 on page 17, enter the 3-digit number that represents the desired symbol. If using a Hebrew keypad, see *Hebrew Special Characters Catalogue* on page 38. If using a Russian keypad, see *Russian Special Characters Catalogue* on page 39. If using a Greek keypad, see *Greek Special Characters Catalogue* on page 40.



Table 6: Special Characters Catalogue

032	048	064	080	096	112	128	144	160	176	192	208	224	240
Ø	0	ø	P	`	Þ	Û	ƒ	ð	š	ø	·	œ	Ɔ
¡	1	À	Q	á	Ɔ	Û	ƒ	î	±	˙	˙	¼	Ɔ
¨	2	ß	R	â	Ɔ	Û	ƒ	ï	ÿ	ð	°	½	Ø
#	3	Ç	S	ç	Ɔ	Û	ƒ	í	↑	ß	˙	¾	8
\$	4	Ð	T	ð	t	Û	ƒ	î	↓	Ç	˙	¾	Ω
%	5	É	U	e	u	Û	ƒ	ï	←	⊗	˙	¾	ß
&	6	ƒ	U	f	u	Û	ƒ	ê	↯	⊗	˙	¾	Σ
’	7	ƒ	W	w	Ɔ	Û	ƒ	ë	↯	⊗	˙	¾	Ɔ
<	8	H	X	h	x	Û	ƒ	è	↯	⊗	˙	¾	Φ
>	9	I	Y	i	y	Û	ƒ	é	↯	⊗	˙	¾	Υ
*	:	J	Z	j	z	Û	ƒ	ê	↯	⊗	˙	¾	β
+	;	K	Ɔ	k	Ɔ	Û	ƒ	ë	↯	⊗	˙	¾	Ɔ
,	<	Ɔ	/	l	l	Û	ƒ	ì	↯	⊗	˙	¾	Ɔ
-	=	M	J	m	Ɔ	Û	ƒ	í	↯	⊗	˙	¾	Ɔ
•	>	N	>	n	→	Û	ƒ	î	↯	⊗	˙	¾	Ɔ
/	?	0	-	o	←	Û	ƒ	ï	↯	⊗	˙	¾	Ɔ

Polish	001	002	003	004	005	006	007
	ż	ć	ą	ę	ź	ł	ś
Hungarian	001	002	003				
	Á	ű	ő				
Turkish	001						
	ü						

**Deleting User Access Codes**

To delete user access codes, follow steps 1 to 4 in *<italic>*section , but press the [CLEAR] button in Step 4. Once the information is erased, press the [ENTER] button to save and exit.

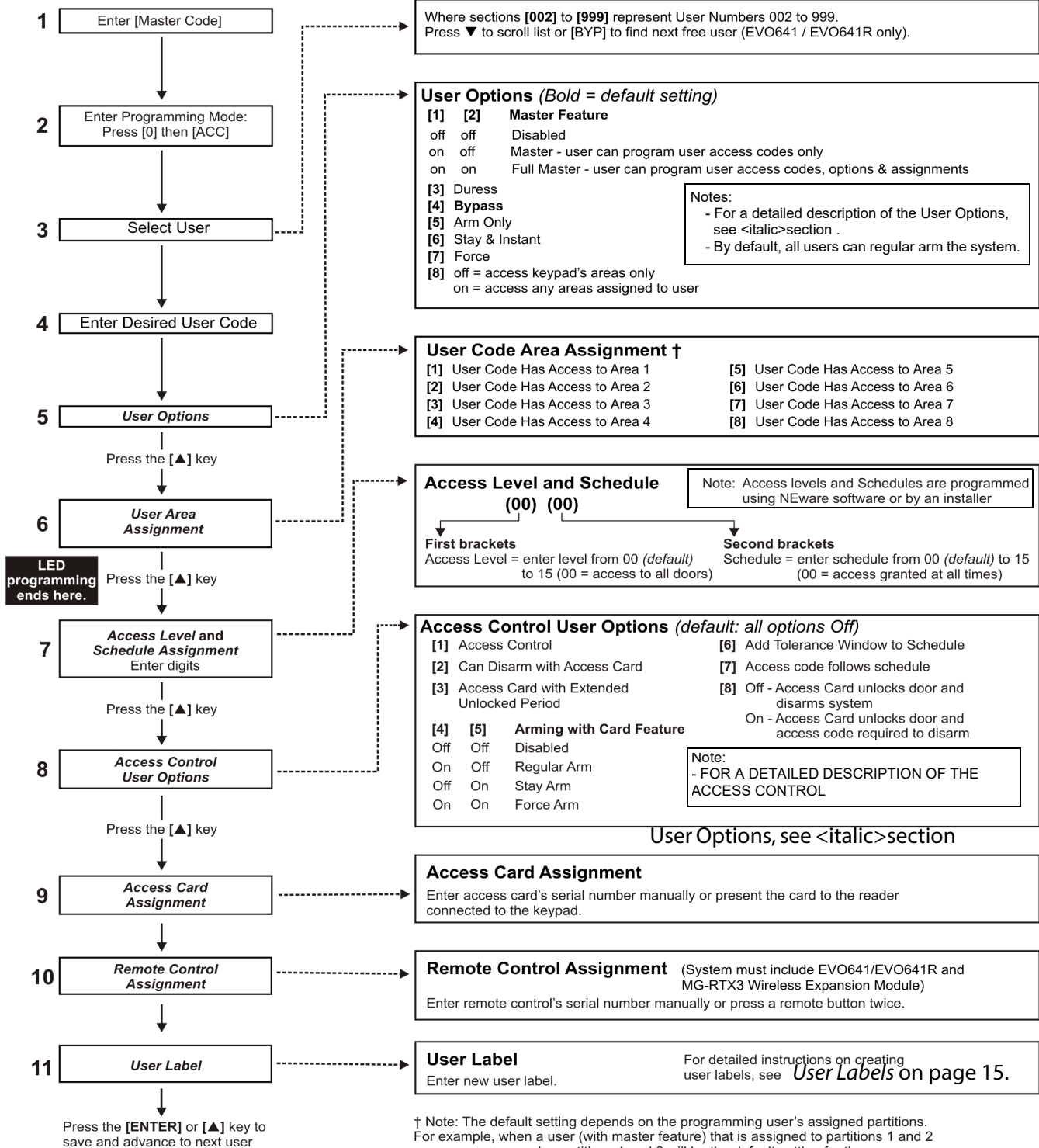
**Programming User Access Codes**

The System Master and Users with the Master feature can program user access codes with User Options and Area Assignments. The *<italic>*section describes the steps you would follow to program user access codes. If you wish to program user access codes using the NEware Software, please contact your installer for information.

If the keypad emits a rejection beep at any point during the programming procedure, you may have chosen an existing user code or you do not have access to certain User Options (section ) and Area Assignments (step 7 in *<italic>*section ). Users with the Master feature can only assign User Options and Area Assignments that they are assigned to. For example, if a User with the Master feature is assigned User Option 1 and Area 2, they can only assign Option 1 and Area 2 to a user access code.

# Programming User Settings

Note: Each option is considered ON when the number appears within the brackets



Note: If no area is assigned, and if PGMs are programmed by your installer, the user can only control the PGMs. Refer to <italic>section for a more detailed explanation of PGMs.

Figure 2 – User Programming

## User Options

### Options [1] and [2]: Master Feature

When option [1] is **OFF**, the User cannot program other users into the system.

When option [1] is **ON** and option [2] is **OFF**, the user can program and modify user access codes (P.I.N. only) and User Labels.

When both options [1] and [2] are **ON**, the user has Full Master rights. The user can create or modify user access codes, User Options, User Access Control Options, Access Card Numbers, User Labels and Area Assignments according to their own programming. For example, if the Full Master User has access to area #1 and option [4] (Bypass) only, the Full Master user can only assign area #1 and option [4] to other users in the system.

### Option [3]: Duress

When option [3] is **ON**, the Duress feature is enabled. This feature is used when someone forces a user to arm or disarm an area(s). By entering a user access code (P.I.N.) reserved for the Duress feature, the system will arm or disarm the area(s), and then send a silent alarm to the monitoring station.

### Option [4]: Bypass

When option [4] is **ON**, the Bypass feature is enabled. This feature allows the user to deactivate zones when arming the area(s).

### Option [5]: Arm Only

When option [5] is **ON**, the Arm Only feature is enabled. The user can arm assigned areas with either a card or code, but cannot disarm. When the option is **OFF**, the user can either arm or disarm assigned areas.

### Option [6]: Stay & Instant Arm

When option [6] is **ON**, the Stay and Instant arm features are enabled. The user can now Stay or Instant arm their assigned areas.

### Option [7]: Force Arm

When option [7] is **ON**, the Force arm feature is enabled. The user can now Force arm their assigned areas.

### Option [8]: Area Access

When option [8] is **ON**, the keypad will permit access to all the areas assigned to the user access code. When option [8] is **OFF**, the keypad will only permit access to the areas it controls. For example, the keypad is assigned area 1 only, and your user access code is assigned areas 1 to 8. If the option is **ON**, you can access all eight areas from the keypad. If the option is **OFF**, you can only access area 1.

Note: By default all users can Regular arm the system.

## Access Control User Options

### Option [1]: Access Control

When option [1] is **ON**, the user can gain access to an access control door when Access Control is enabled in the system. A user that is not assigned to any partition, but has the Access Control option (Option [1]) enabled, can now gain access to an access control door by entering a code # (P.I.N.) and then pressing the [ACC] keypad key. When the option is **OFF**, the user cannot access an Access Control door.

### Option [2]: Can Disarm with Access Card

When option [2] is **ON**, a User's Access Control card can unlock and disarm an armed Access Control door. When option [2] is **OFF**, follow the settings in option [8] on page 19.

**Warning:** For option [2] to function in the **ON** position, option [5] "Arm Only" in the User Options must be disabled (refer to *<italic>*section ).

**Option [3]: Card with Extended Unlocked Period**

When option [3] is **ON**, "Extended Unlocked Period" is enabled. "Extended Unlocked Period" refers to the time period programmed into each Access Control door by your installer that extends the unlocked time of the door. For example, if your installer sets the Unlocked period of the door to 30 seconds and the Extended Unlocked Period to 15 seconds, a user access code with "Extended Unlocked Period" enabled will have a total of 45 seconds to pass through the door.

**Options [4] and [5]: Arming with Card**

Options [4] and [5] define the type of arming when arming with an Access Control card (refer to *<section>*). You can either Regular arm, Stay arm, Force arm, or Disable the Arming with Card feature.

[4] **ON**, [5] **OFF** = Regular Arm

[4] **OFF**, [5] **ON** = Stay Arm

[4] **ON**, [5] **ON** = Force Arm

[4] **OFF**, [5] **OFF** = Disable the Arming with Card feature

**Option [6]: Add Tolerance Window to Schedule**

When option [6] is **ON**, the Schedule Tolerance Window feature is enabled. This feature extends a user's scheduled access period through an Access Control door by the amount programmed by your installer. For example, if the user's assigned schedule for the door is Monday to Friday from 9:00 a.m. to 5:00 p.m., and your installer sets the "Tolerance Window" at one hour, the user with the "Schedule Tolerance Window" enabled will be able to enter and exit one hour before and after their scheduled time for that door.

**Option [7]: Code Follows Schedule**

When option [7] is **ON**, users can use their access codes only during their scheduled hours assigned in step 8 in *<section>*. When the option is **OFF**, users can use their access codes at any time.

**Option [8]: Card to Unlock and Code to Disarm**

Option [8] functions only if option [2] in *section* is OFF. When option [8] is **ON**, a user can use an Access Control card to unlock an armed Access Control door, however the user **must** enter a user access code to disarm the armed area. When option [8] is **OFF**, a user can gain access to an Access Control door only if the door's area(s) is already disarmed.

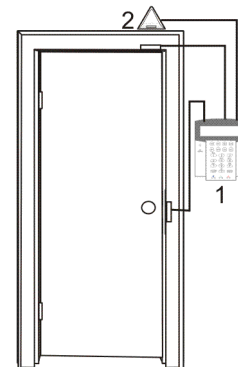
**Warning:** For option [8] to function in the ON position, option [5] "Arm Only" in the User Options must be disabled (refer to *<section>*).

## Using Access Control

### Entering & Exiting

Depending on how your system is installed and on the type of keypad, there are various ways to enter and exit Access Control doors:

- Present your Access Control card to the reader or the K641R keypad. The system will verify that the card is allowed access according to its assigned Access Level and Schedule. If it is accepted, the system will unlock the door. The reader's light can be programmed by the installer to turn green or extinguish briefly to indicate that the door can be opened.
- When the motion detector detects movement (Request for Exit), it will unlock the door to permit passage from inside.
- Enter your user access code on the keypad and press [ACC].
- If the Access Control door is on a "Door Unlocked Schedule", you may be able to open Access Control doors without using a user access code or an Access Control card. Depending on the door's programming, the door can remain unlocked during the entire programmed schedule or the door can unlock once a valid Access Control card is presented to the reader during the schedule and then will remain unlocked for the remainder of the schedule.



1 = EVO641R  
2 = "Request for Exit" Motion Detector

### Arming and Disarming with Card

#### Arming with Card

- Presented to a door during its assigned Schedule (refer to step 8 in <italic>section ).
- Presented to a door within its assigned Access Level (refer to step 8 in <italic>section ).
- Programmed to allow arming (options [4] and [5] in (see <italic>section ).
- Assigned to all areas that are assigned to the Access Control door (refer to step 7 in <italic>section ), or assigned to at least one of the areas assigned to the Access Control door depending on how your installer has programmed the Access Control door.

#### Disarming with Card

To disarm and unlock an Access Control door when the area assigned to it is armed, present your Access Control card to the reader or K641R keypad (door). The Access Control card must be:

- Presented to a door during its assigned Schedule (refer to step 8 in <italic>section ).
- Presented to a door within its assigned Access Level (refer to step 8 in <italic>section ).
- Programmed to allow disarming (option [2] in (see <italic>section ).
- Assigned to all areas that are assigned to the Access Control door (refer to step 7 in <italic>section ), or assigned to at least one of the areas assigned to the Access Control door depending on how your installer has programmed the Access Control door.

### How Access Control Works

To illustrate how Access Control functions, we will use three simple Access Control System examples:



Figure 3 – Example A

Bonnie's Access Control card is programmed with Access Level 01 and Schedule 01. If she presents her card to the reader or the K641R keypad on Door 02 on Tuesday, August 3 at 3:00 p.m., she will gain access to the room.

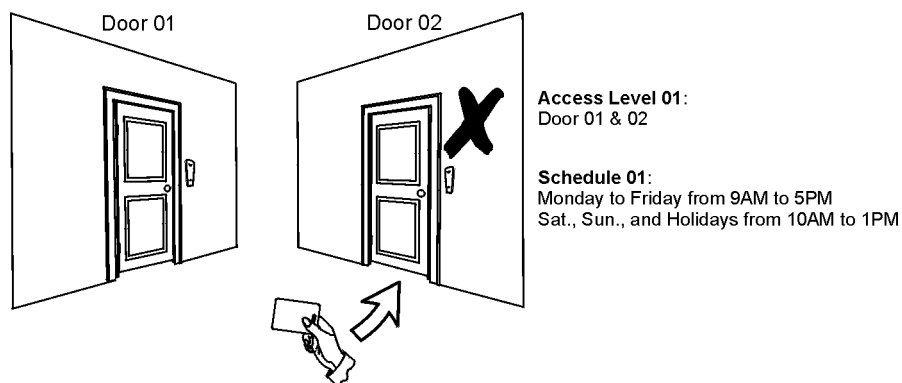


Figure 4 – Example B

If Bonnie presents her card to the reader or the K641R keypad on Door 02 on Saturday or on a Holiday at 3:00 p.m., she will be denied access.

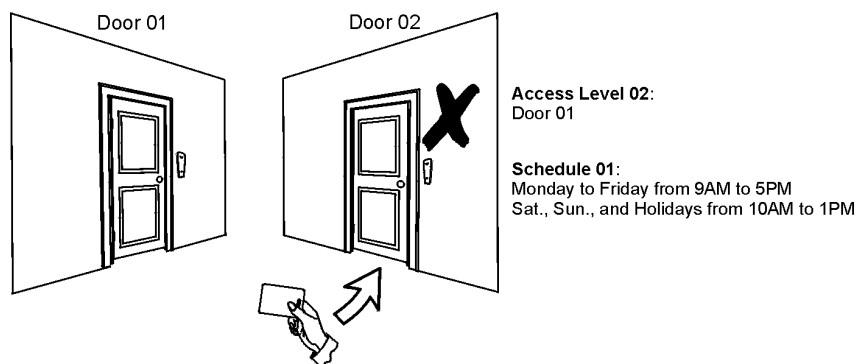


Figure 5 – Example C

If we change Bonnie's Access Level to 02 and she presents her card to the reader or the K641R keypad on Door 02 on Tuesday, August 3 at 3:00 p.m., she will be denied access.

## Trouble Display

### Trouble Display

If your system experiences any problems,  $\overline{\text{WURXEDHV}}$ ,  $\overline{\text{WUEO'WR YHz}}$  will appear on the screen, or the  $\text{TRBL}$  action light will illuminate. The Trouble Display will only display the troubles that occur in the area(s) to which the keypad has been assigned. Potential troubles have been sorted into eight groups. Only the troubles which are relevant to you are listed and described below. If a trouble that is not described or listed below appears, contact your installer. To view the Trouble Display:

1. Press the **[TRBL]** button.

The Group Heading with the trouble will appear on the screen. Press the **[▲]** and **[▼]** buttons to scroll between the Groups experiencing a trouble.

2. Press the **[NUMBER]** of the Trouble you wish to view.

**Warning: We strongly suggest that if any troubles occur, contact your installer immediately to have your system serviced.**

#### Group 1: System

##### [1] AC Failure

The control panel has detected a power failure. This means that your system is running on the backup battery. If this trouble occurs when your establishment is not experiencing a power failure, call your installer for repairs.

##### [2] Battery Trouble

The backup battery is disconnected, needs to be recharged, or replaced.

##### [5] Bell Absent

The system has detected that the bell or siren is not connected.

#### Group 2: Communicator

##### [1] TLM1

The control panel is unable to access the main telephone line.

##### [2] to [5] Fail to Communicate (1 to 4)

The control panel tried all assigned telephone numbers and failed to contact the monitoring station.

##### [6] Fail to Communicate PC

The control panel is unable to communicate with the BabyWare software.

#### Group 5: Zone Tamper

The zone(s) that was tampered with will be displayed on the LCD screen.

#### Group 6: Zone Low Battery

If a wireless device's battery needs to be replaced, the zone that is assigned to the device will be displayed on the LCD screen.

#### Group 7: Zone Fault

A wireless device is no longer communicating with its receiver, or a connection or CleanMe™ trouble is occurring with your smoke detectors.

#### Group 8: Clock Loss

The time and date have been reset to the default. This is the only trouble that we recommend that you correct. Clock Loss [8] to Set will appear on the LCD screen after you press the **[trbl]** button or the **[●]** key. Refer to *<italic>*section to set the time and date.

## Event Record Display

The Event Record Display will record the user-initiated actions that occurred in your system as well as any alarms or troubles (e.g. "Access Granted"). You will only be able to view the events that occurred in the area(s) assigned to your user access code. Only available on LCD keypads.

To view the Event Record:

1. Enter your **[MASTER CODE]**.
2. Press the **[7]** button or scroll to view events.
3. If you have access to more than one area, select the area(s) you wish to view.
4. Use the **[▲]** and **[▼]** buttons to scroll between the events.
5. Press the **[CLEAR]** button to exit.

Once you have entered Event Record Display mode, you can change the order that the Event Record screens appear by pressing the **[7]** button. If you already know the number of the event you want to view, press the **[MEM]** button after step 3 above, and then enter the event's number.



## Additional Features

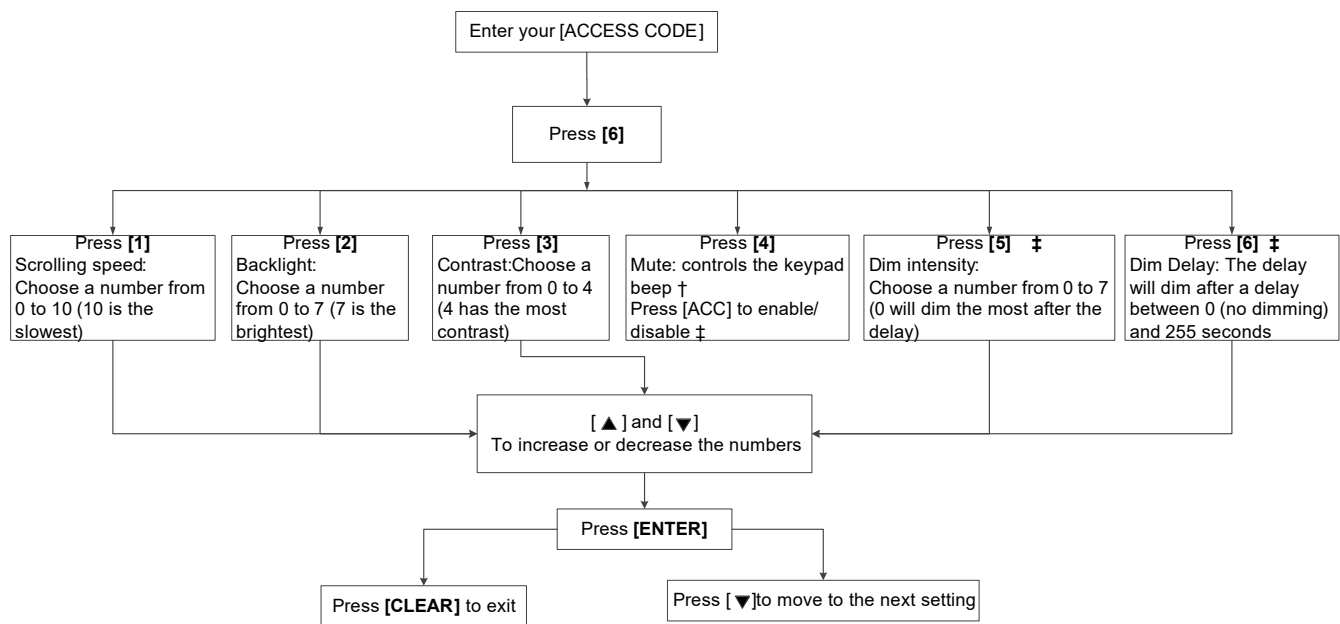
### Programmable Outputs (PGMs)

Your system includes Programmable Outputs (PGMs) that can be programmed by your installer. A PGM triggers when a predetermined event or series of events occurs in your system. The PGMs can be programmed to reset smoke alarms, turn on light switches, open or close garage doors and much more. Ask your installer about this useful feature.

### Keypad Settings

You can modify the keypad settings to suit your needs.

1. Scrolling Speed refers to the amount of time that a message will remain on the screen before moving to the next message.
2. Backlight refers to the illumination behind the buttons and LCD screen.
3. Contrast refers to how dark or pale characters will appear on the screen.



\*This feature cannot be accessed via One-Touch Buttons (see *<section>*).

†When keypad mute is enabled, only confirmation, rejection, and key-press beeps are audible.

‡ K641R only

Figure 6 – Modifying LCD screen settings on LCD Keypads

### Setting Time & Date

To reset the time and date:

1. Enter your [ACCESS CODE] and press the [TRBL] button.
2. Press the [8] button.
3. To change the time, place the cursor under the number you want to change by using the [▲] button and enter the time according to a 24-hour clock (e.g. 9 a.m. is 09:00 and 9 p.m. is 21:00).
4. To change the date, place the cursor under the number you want to change and enter the correct date according to year/month/day.
5. Press the [ENTER] button to save and exit.

## Programming Chime Zones

You can program the keypad to emit a rapid, intermittent beep tone whenever designated zones are opened or only when opened between certain hours. These zones are referred to as Chime Zones. Your installer can also program your Chime zones to beep upon closure.

How do I program chime zones?

1. Enter your [ACCESS CODE].
2. Press the [9] key.
3. Press the [1] key to chime a zone. Enter the number corresponding to the zone to be chimed, or use the [▲] and [▼] buttons to scroll the list of zones. Press the [ACC] button to chime or unchime the zone that appears on the screen. Press [ENTER] to save.  
**OR**  
Press the [2] button to set the time period a chimed zone will beep. Enter the time that the chimed zone(s) will start beeping when opened (HH:MM). Enter the time that the chimed zone(s) will stop beeping when opened (HH:MM).
4. Press [CLEAR] to exit chime programming.

## Panic Alarms

Your system can be programmed to send an alarm to your monitoring station to request help from the police, a medical facility, the fire department, or anyone you wish when you press a predetermined combination of buttons. To generate a panic alarm, simultaneously press and hold the button combinations displayed in table on page 26. Your installer can program the alarm to be either silent or audible.

Table 7: Panic Buttons

Panic Alarm Types	Buttons to be pressed and held simultaneously
Emergency Panic	Press & hold the [1] and [3] buttons
Auxiliary Panic	Press & hold the [4] and [6] buttons
Fire Panic	Press & hold the [7] and [9] buttons

## Quick Function Buttons

You will only need to use the Quick Function Buttons upon your installer's or monitoring station's request. Only the System Master Code or user access codes with the Master feature enabled will be able to access these functions.

To access the Quick Function Buttons:

1. Enter your [ACCESS CODE]
2. Press the [0] button.
3. Press the:
  - [STAY] to **send** a test report to the monitoring station.
  - [FORCE] to **call** the BabyWare software.
  - [ARM] to **answer** the BabyWare software.
  - [DISARM] to **cancel** communication with the BabyWare software.

## **VDMP3 Plug-In Voice Dialer**

The VDMP3 is a voice-assisted module that can be programmed to call up to 8 telephone numbers in the event of an alarm. You can also call the VDMP3 from an outside line, enabling you to arm or disarm the system as well as activate up to 8 PGMs.

### **Calling the VDMP3 (outside line)**

#### ***If your outside line is connected to an answering machine:***

1. From an outside line, dial the telephone number to which the VDMP3 is connected.
2. When the line rings, hang up the telephone.
3. Dial the telephone number again within the time limit set by your installer.
4. When the VDMP3 answers the line, you are prompted to enter your access code.
5. Options are given to arm/disarm (1) and control features (PGMs) (2).

#### ***If your outside line is not connected to an answering machine:***

1. From an outside line, dial the telephone number to which the VDMP3 is connected.
2. When the VDMP3 answers the line, you are prompted to enter your access code.
3. Options are given to arm/disarm (1) and control features (PGMs) (2).

### **Receiving a Call From the VDMP3 (alarm in system)**

When the VDMP3 calls because of an alarm in the system, the option is given to disarm the system or disconnect (##). If you hang up without disarming or disconnecting, the VDMP3 calls the next telephone number on its list (see *Telephone Numbers* in VDMP3 Setup Instructions).

## **Burglar Alarm Testing**

Two people are needed to complete this test. One person will watch the screen on the keypad while the other person walks around the protected areas and opens the zones (e.g. opens the doors and windows that are protected, walk in the path of the motion detectors, etc.). The screen will display the opened zones, but if a zone does not register, contact your installer.

## **Fire Alarm Testing**

Do NOT use an open flame or burning materials to test your fire detection devices. Your installer will provide details on the best way to test your system.

## **System Maintenance**

Under normal use your system requires no maintenance other than regular testing. We recommend that your installer change the battery every three years.

## **System Test**

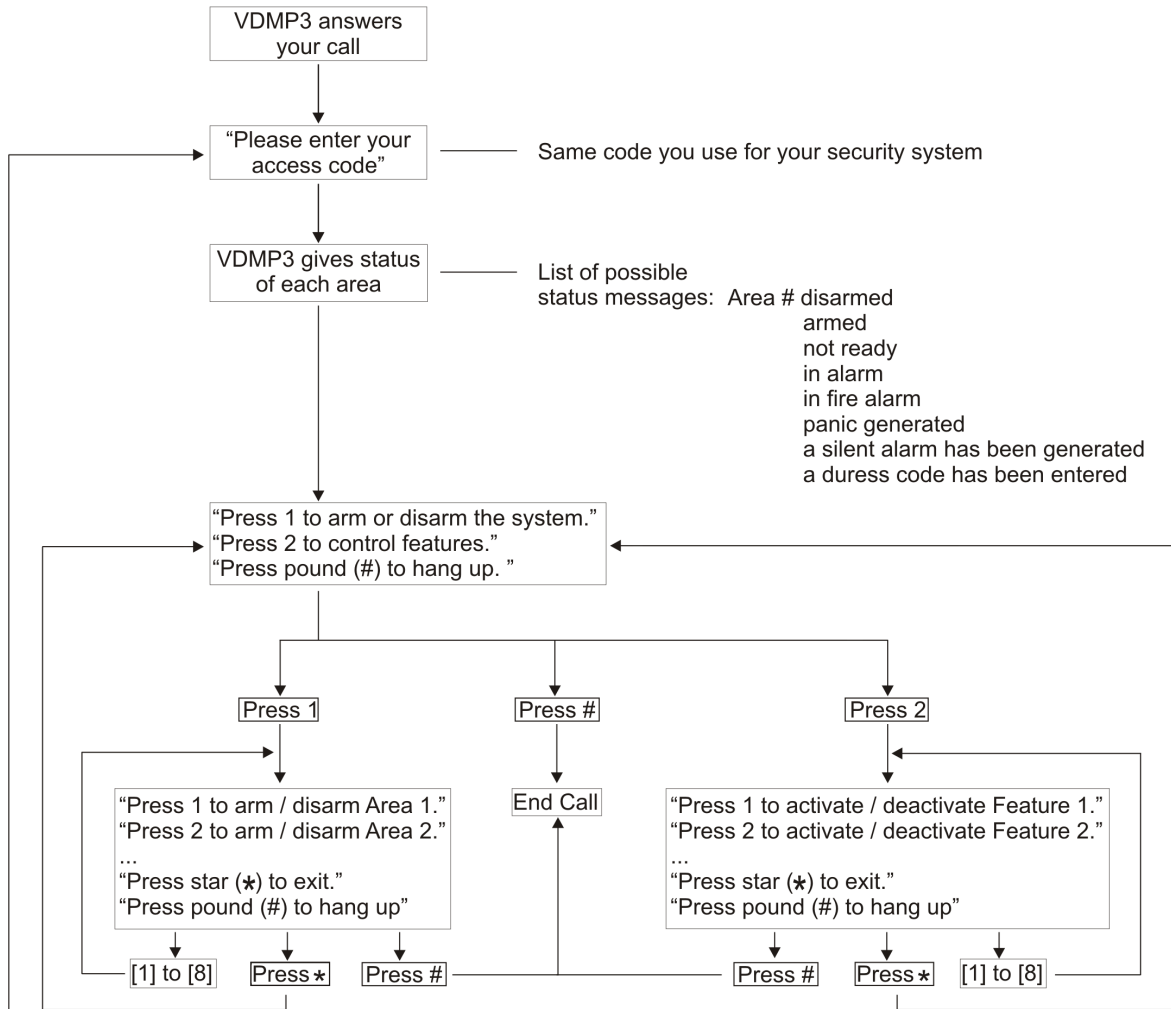
Speak to your installer before conducting a System Test since the system must be programmed to respond to the test instructions. It is normally recommended that you conduct the system test once a week, but contact your installer for instructions concerning your particular system.

To conduct the system test:

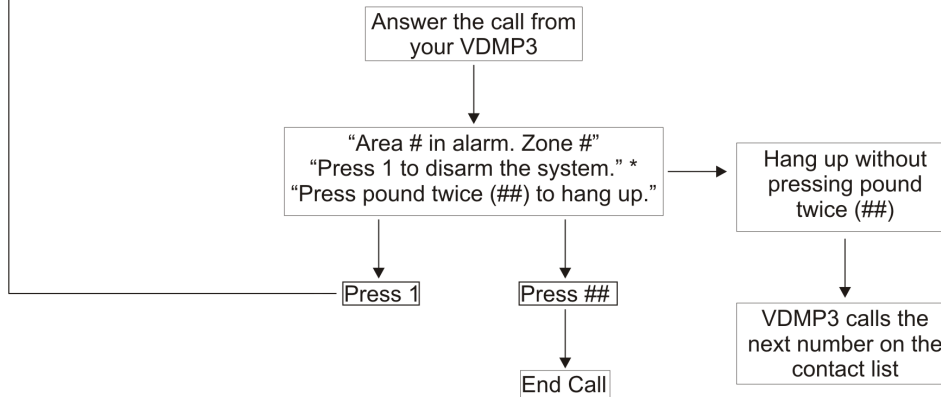
1. Call your monitoring station to advise them that you are testing your system.
2. Enter your **[ACCESS CODE]**.
3. Press the **[8]** button.

The system will test all its connections and can send a report to your monitoring station. If the system detects a problem, the Trouble Display will show on the keypad or touchpad screen. Call your installer for repairs if any troubles occur.

## Calling the VDMP3



## Receiving a Call From the VDMP3



\* If multiple areas are in alarm, the VDMP3 hangs up and calls back to report other alarms.

## Fire and Burglar Alarms

### Standard Fire Zone

During a fire alarm, the bell/siren emits an intermittent sound (BEEP-BEEP-BEEP) until silenced or reset. If the zone is a Standard Fire Zone, your system can immediately send an alert to your monitoring station.

The CMS will try to contact you. If they cannot reach you for any reason, for example they get a busy signal, the procedure is to dispatch the proper authorities.

To disarm a false alarm:

1. Enter your [ACCESS CODE] on the keypad.
2. Call your monitoring station quickly to advise them of the false alarm.

**Warning: The Fire Zone may reset itself once the problem has cleared. If it does not, simultaneously press and hold the [CLEAR] and [ENTER] buttons for two seconds.**

### Delayed Fire Zone

If the zone is a Delayed Fire Zone, there is an automatic delay before your system contacts your monitoring station. Refer to Figure 8 on page 33 to prevent unnecessary reporting of false alarms.

If the fire alarm is accidentally triggered:

1. Press the [CLEAR] button within 30 seconds of the alarm.
2. Clear the problem from the area (e.g. clear the smoke from around the smoke detector).
3. If the problem remains after 90 seconds, the alarm will sound again. Press [CLEAR] again.
4. The system will delay reporting the alert for another 30 seconds.

Note: If you are unable to cancel the false alarm, your system will send an alert. Call your monitoring station to advise them of the false alarm.

**Warning: The Fire Zone may reset itself once the smoke has cleared. If it does not, simultaneously press and hold the [CLEAR] and [ENTER] buttons for two seconds or speak to your installer.**

### Fire Safety Tips

How should you prepare in case of a fire in your home or business?

- Remind everyone to escape first, and then call for help.
- Develop a fire escape plan and designate a meeting place outside.
- Practice the escape plan frequently.
- Plan two ways to escape from every room, if possible.
- Practice feeling the way out with eyes closed.
- Instruct everyone **never** to stand up during a fire, always crawl under the smoke and keep mouths covered.
- Instruct everyone **never** to return to a burning building for any reason; it may cost them their life.
- Check smoke alarms regularly. Working smoke alarms dramatically increase everyone's chances of surviving a fire.

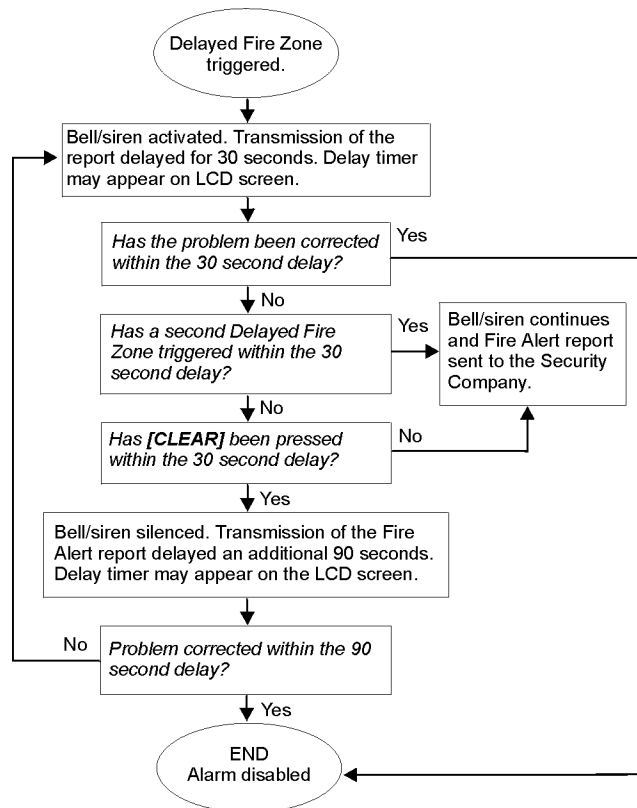


Figure 7 – Delayed Fire Zone

## Minimizing Home Fire Hazards

How can you avoid the three most common causes of fires at home?

- Never leave cooking food unattended. It's the leading cause of fire injuries. Cooking fires often result from unattended cooking and human error, rather than mechanical failure.
- Stay alert when smoking. Careless smoking is the leading cause of fire deaths. Smoke detectors and smoulder-resistant bedding and upholstered furniture are significant fire deterrents.
- Maintain your heating system. Faulty heating systems are the second leading cause of residential fires.

## Home Fire Warning System

Household fires are especially dangerous at night. Fires produce smoke and deadly gases that can overcome occupants while they sleep. To warn against fire, install smoke detectors outside each separate sleeping area in the immediate vicinity of the bedrooms and on each additional story of the family living unit, including basements.

## Burglar Alarm

If your armed system is breached, the burglar alarm devices specific to your system will be triggered. The feedback will vary depending on the type of keypad used. If your keypad is in *Normal Mode*:

- In Alarm will appear on LCD screen.
- Bell or siren may be activated.
- The keypad may beep. The *MEM* action light will illuminate.

**Warning:** In case of a burglar alarm, leave the premises and call the police station from a safe place.

## Fire and Burglar Alarms

### Standard Fire Zone

During a fire alarm, the bell/siren emits an intermittent sound (BEEP-BEEP-BEEP) until silenced or reset. If the zone is a Standard Fire Zone, your system can immediately send an alert to your monitoring station.

The CMS will try to contact you. If they cannot reach you for any reason, for example they get a busy signal, the procedure is to dispatch the proper authorities.

To disarm a false alarm:

1. Enter your [ACCESS CODE] on the keypad.
2. Call your monitoring station quickly to advise them of the false alarm.

**Warning: The Fire Zone may reset itself once the problem has cleared. If it does not, simultaneously press and hold the [CLEAR] and [ENTER] buttons for two seconds.**

### Delayed Fire Zone

If the zone is a Delayed Fire Zone, there is an automatic delay before your system contacts your monitoring station. Refer to Figure 8 on page 33 to prevent unnecessary reporting of false alarms.

If the fire alarm is accidentally triggered:

1. Press the [CLEAR] button within 30 seconds of the alarm.
2. Clear the problem from the area (e.g. clear the smoke from around the smoke detector).
3. If the problem remains after 90 seconds, the alarm will sound again. Press [CLEAR] again.
4. The system will delay reporting the alert for another 30 seconds.

Note: If you are unable to cancel the false alarm, your system will send an alert. Call your monitoring station to advise them of the false alarm.

**Warning: The Fire Zone may reset itself once the smoke has cleared. If it does not, simultaneously press and hold the [CLEAR] and [ENTER] buttons for two seconds or speak to your installer.**

### Fire Safety Tips

How should you prepare in case of a fire in your home or business?

- Remind everyone to escape first, and then call for help.
- Develop a fire escape plan and designate a meeting place outside.
- Practice the escape plan frequently.
- Plan two ways to escape from every room, if possible.
- Practice feeling the way out with eyes closed.
- Instruct everyone **never** to stand up during a fire, always crawl under the smoke and keep mouths covered.
- Instruct everyone **never** to return to a burning building for any reason; it may cost them their life.
- Check smoke alarms regularly. Working smoke alarms dramatically increase everyone's chances of surviving a fire.



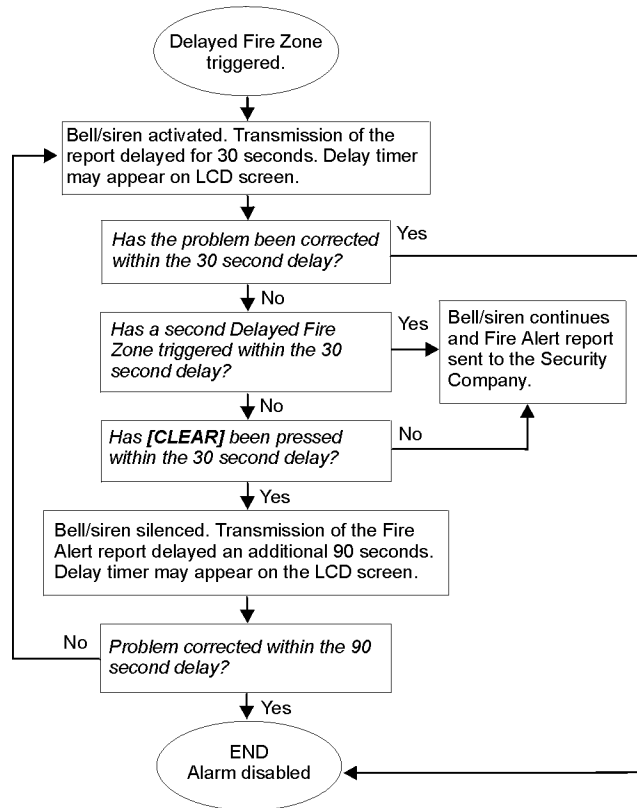


Figure 8 – Delayed Fire Zone

## Minimizing Home Fire Hazards

How can you avoid the three most common causes of fires at home?

- Never leave cooking food unattended. It's the leading cause of fire injuries. Cooking fires often result from unattended cooking and human error, rather than mechanical failure.
- Stay alert when smoking. Careless smoking is the leading cause of fire deaths. Smoke detectors and smoulder-resistant bedding and upholstered furniture are significant fire deterrents.
- Maintain your heating system. Faulty heating systems are the second leading cause of residential fires.

## Home Fire Warning System

Household fires are especially dangerous at night. Fires produce smoke and deadly gases that can overcome occupants while they sleep. To warn against fire, install smoke detectors outside each separate sleeping area in the immediate vicinity of the bedrooms and on each additional story of the family living unit, including basements.

## Burglar Alarm

If your armed system is breached, the burglar alarm devices specific to your system will be triggered. The feedback will vary depending on the type of keypad used. If your keypad is in *Normal Mode*:

- In Alarm will appear on LCD screen.
- Bell or siren may be activated.
- The keypad may beep. The *MEM* action light will illuminate.

**Warning:** In case of a burglar alarm, leave the premises and call the police station from a safe place.

## Basic Operation of the TouchPad TM70/TM50

The touchpad is a versatile input device that lets you, the master user, along with other users, manage your system. This touchpad has a lot of the same capabilities as your BlueEye App. Management and configuration of the system through the touchpad can be restricted to users of your choice.

This section will break down the functionality of the touchpad into the following groupings.

- Main screen direct access
- Security Functions
- Control Devices
- Add-ons
- Personalize
- User codes
- Advanced
- System Settings

The touchpad home screen has the following control options directly from the home screen.

### Touchpad Main Screen

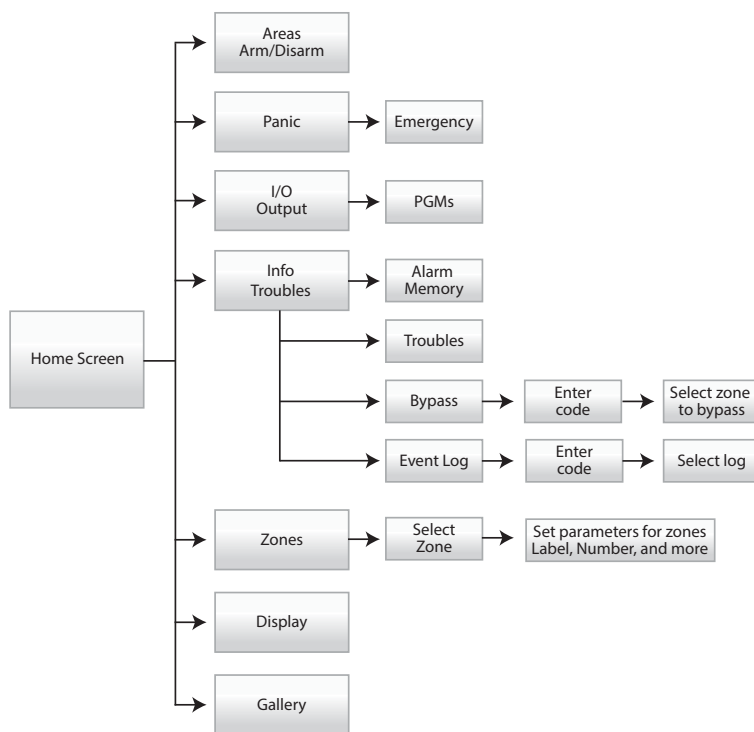


Figure 9 – Main Screen Direct Access

The Areas button and Panic button need to be added to the home screen by your installer. The slide show is accessed with the icon or through the menu => Personalize => slide show.

## Touchpad Security Functions

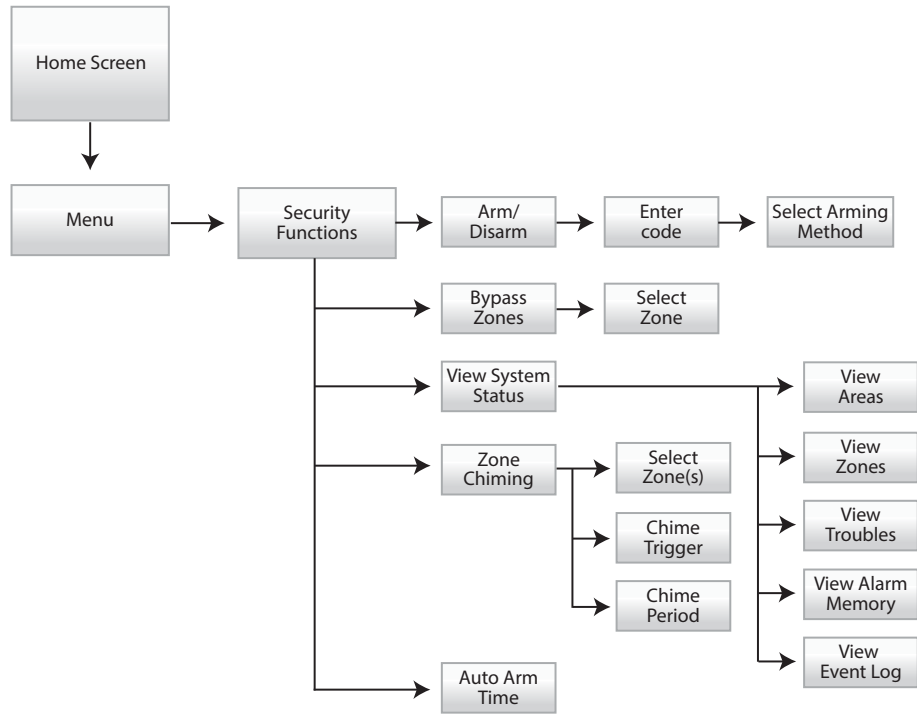


Figure 10 – Security Functions

## Touchpad Control Devices

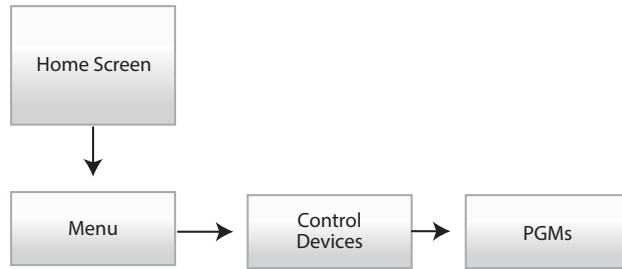


Figure 11 – Control Devices

## Touchpad Add-on Functions

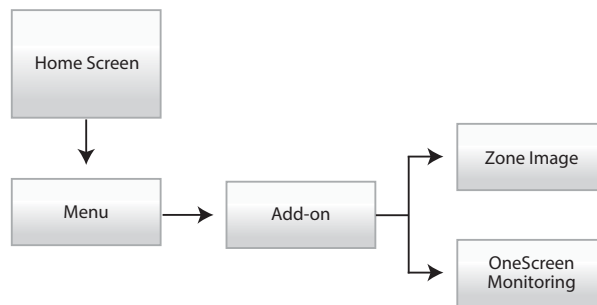


Figure 12 – Add On Functions

## Touchpad Personalize

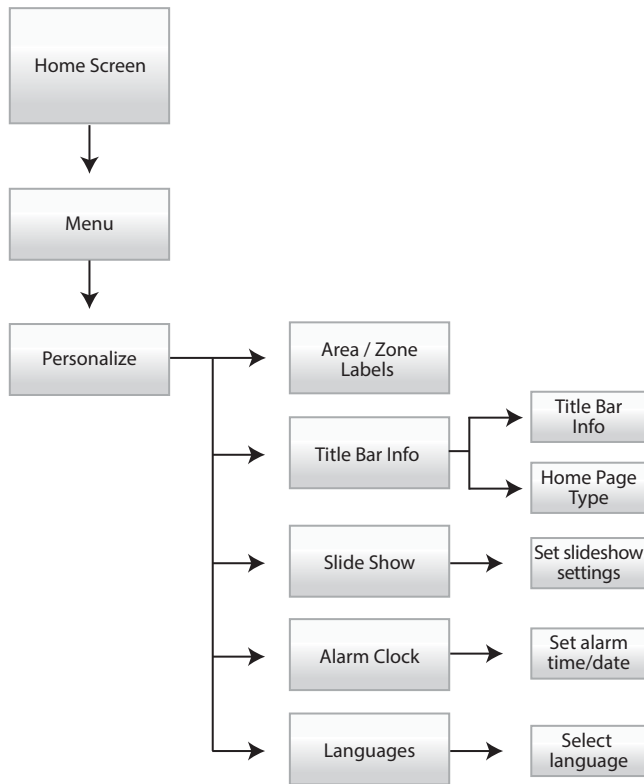


Figure 13 – Personalize

## Touchpad User Codes

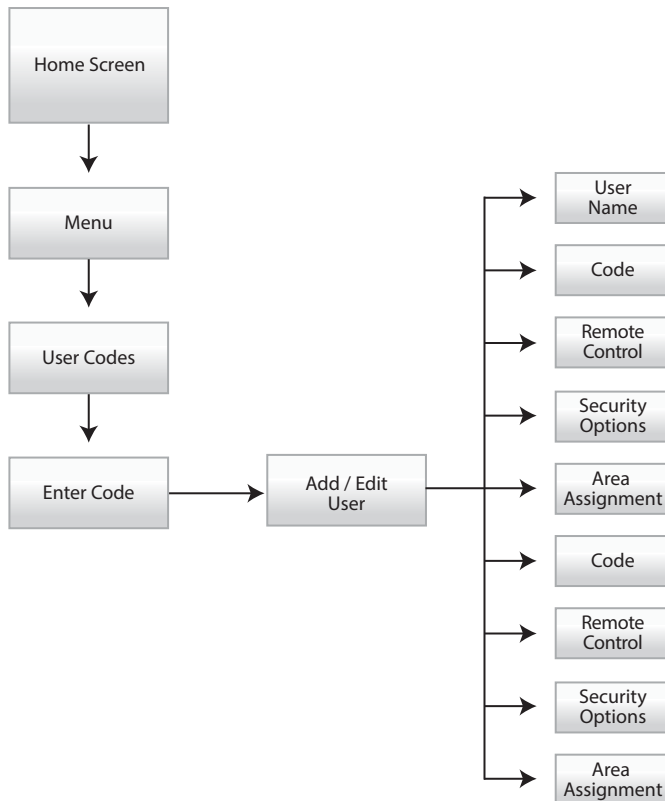


Figure 14 – User Codes

## Touchpad Advanced Functions

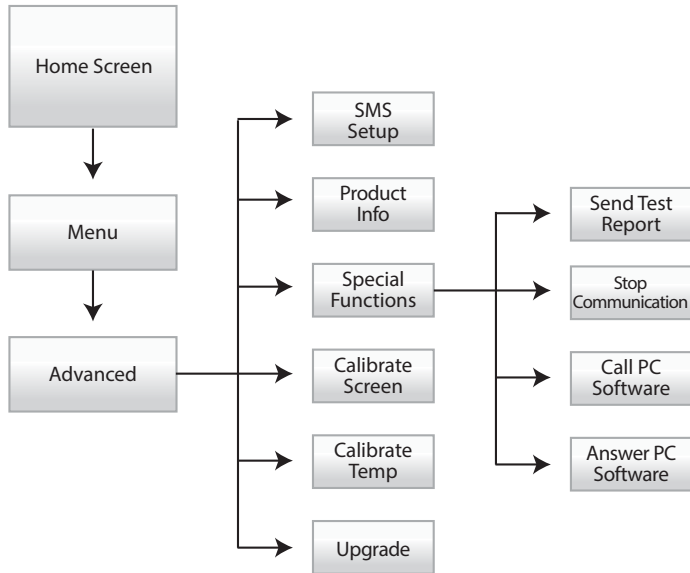


Figure 15 – Advanced Functions

## Touchpad System Settings

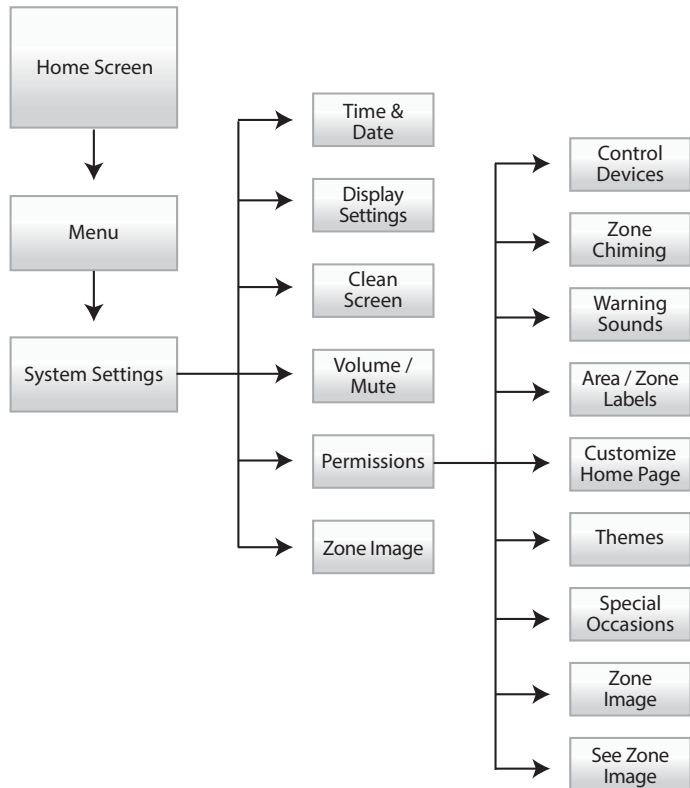


Figure 16 – System Settings

# Appendix A

## Hebrew Special Characters

Refer to the following tables when programming the user labels of a Hebrew LCD keypad. Instead of using table on page 15 and table 6 on page 17, use Tables 9 and 10 below. Refer to section on page 15 for information on programming user labels.

Table 8: Hebrew Keypad Letter Assignment

Key	Press key once	Press key twice	Press key three times
[1]	א	ב	ג
[2]	ד	ה	ו
[3]	ז	ח	ט
[4]	י	כ	ל
[5]	מ	נ	ס
[6]	ע	פ	צ
[7]	ק	ר	ש
[8]	ת		
[9]			

Table 9: Hebrew Special Characters Catalogue

032	048	064	080	096	112	160	176	192	208	224	240
	Ø	Й	Р	У	Р	א	נ	ת	כ	ע	פ
033	049	065	081	097	113	161	177	193	209	225	241
!	1	А	Q	а	р	ב	ס	ז	ך	צ	ב
034	050	066	082	098	114	162	178	194	210	226	242
=	2	В	Р	б	р	ג	ל	ה	ם	ט	פ
035	051	067	083	099	115	163	179	195	211	227	243
#	3	С	С	с	ס	ד	ף	ש	ן	ת	ה
036	052	068	084	100	116	164	180	196	212	228	244
φ	4	Д	Т	д	т	ה	פ	ש	ת	ת	ר
037	053	069	085	101	117	165	181	197	213	229	245
%	5	Е	U	e	u	ו	ז	ח	ת	ו	ו
038	054	070	086	102	118	166	182	198	214	230	246
&	6	Ф	У	f	u	ז	א	י	ת	ס	פ
039	055	071	087	103	119	167	183	199	215	231	247
'	7	Г	В	g	в	ק	ה	א	ו	ת	ת
040	056	072	088	104	120	168	184	200	216	232	248
<	8	Н	Х	н	х	ג	ל	א	ו	ת	פ
041	057	073	089	105	121	169	185	201	217	233	249
)	9	И	У	i	у	י	ש	א	ת	ו	ט
042	058	074	090	106	122	170	186	202	218	234	250
*	:	Ј	З	ј	з	ל	ת	א	ת	ו	ב
043	059	075	091	107	123	171	187	203	219	235	251
+	Г	К	В	к	в	ו	ט	ז	ל	ט	ז
044	060	076	092	108	124	172	188	204	220	236	252
,	<	Л	П	l	п	י	ב	ה	ה	ו	ר
045	061	077	093	109	125	173	189	205	221	237	253
-	=	М	В	м	в	ק	ו	ו	ו	ו	ע
046	062	078	094	110	126	174	190	206	222	238	254
□	>	Н	>	н	→	ד	ז	א	ו	ל	ת
047	063	079	095	111	127	175	191	207	223	239	255
/	Д	О	В	о	←	ו	ז	ל	ו	ו	■



## Greek Special Characters

Refer to the following tables when programming the user labels of a Greek LCD keypad. Instead of using table on page 15 and table 6 on page 17, use Tables 13 and 14 below. Refer to section on page 15 for information on programming user labels.

Table 12: Keypad to Letter Insertion

Key	Press key once	Press key twice	Press key three times
[1]	C	D	I
[2]	F	G	\
[3]	J	S	K
[4]	M	N	O
[5]	P		Q
[6]	R	T	U
[7]	V	W	H
[8]	E	[	Y

Table 13: Greek Special Characters Catalogue

016	032	048	064	080	096	112	128	144	160	176	192	208	224	240
±		∅	∂	ρ	`	ρ	ς	έ	ὲ	·	↑	™	β	τ
017	033	049	065	081	097	113	129	145	161	177	193	209	225	241
≡	!	1	Α	Q	α	α	ü	æ	í	¨	J	†	Υ	υ
018	034	050	066	082	098	114	130	146	162	178	194	210	226	242
∩		2	Θ	R	b	r	é	ff	ó	◊	∞	§	δ	χ
019	035	051	067	083	099	115	131	147	163	179	195	211	227	243
∪	#	3	ϸ	S	c	s	ä	ô	ú	˘	∇	¶	ε	ψ
020	036	052	068	084	100	116	132	148	164	180	196	212	228	244
f	\$	4	D	T	d	t	ä	ö	φ	˘	←	Γ	ζ	ω
021	037	053	A069	085	101	117	133	149	165	181	197	213	229	245
∫	%	5	E	U	e	u	ä	ö	φ	˘	↑	Δ	η	π
022	038	054	070	086	102	118	134	150	166	182	198	214	230	246
∫	&	6	F	V	f	v	ä	ü	¥	˘	↓	θ	θ	π
023	039	055	071	087	103	119	135	151	167	183	199	215	231	247
∫	'	7	G	W	g	w	ς	ü	₣	×	→	λ	λ	π
024	040	056	072	088	104	120	136	152	168	184	200	216	232	248
∫	<	8	H	X	h	x	è	ü	₣	÷	←	Ξ	K	π
025	041	057	073	089	105	121	137	153	169	185	201	217	233	249
∫	)	9	I	Y	i	y	è	ö	ı	≤	Γ	Π	λ	π
026	042	058	074	090	106	122	138	154	170	186	202	218	234	250
≈	*	:	J	Z	j	z	è	ü	₣	≥	Γ	Σ	μ	F
027	043	059	075	091	107	123	139	155	171	187	203	219	235	251
∫	+	;	K	L	k	l	ı	ı	₣	«	Γ	Υ	υ	π
028	044	060	076	092	108	124	140	156	172	188	204	220	236	252
≡	'	<	L	\	ı	ı	ı	ı	₣	»	Γ	Φ	ξ	□
029	045	061	077	093	109	125	141	157	173	189	205	221	237	253
∫	-	=	M	]	ı	ı	ı	ı	₣	≠	·	ψ	π	-
030	046	062	078	094	110	126	142	158	174	190	206	222	238	254
∫	◊	>	N	^	ı	ı	ı	ı	₣	√	⊗	∩	ρ	∫
031	047	063	079	095	111	127	143	159	175	191	207	223	239	255
∫	/	?	O	-	o	Δ	Δ	ı	φ	-	⊗	α	σ	∫



**Index****A**

Access Codes  
 Deleting 17  
 Labeling 15  
 Programming 17  
 System Master 14  
 User 14

Access Control 19  
 Entering & Exiting 21

Access Control User Options  
 Access Control 19  
 Add Tolerance Window to  
 Schedule 20  
 Arming with Card 20  
 Can Disarm with Access Card  
 19  
 Card to Unlock and Code to  
 Disarm 20  
 Code Follows Schedule 20  
 Extended Unlocked Period 20

Add Tolerance Window to User  
 Schedule 20

Alarm Clock 34

Alarm memory 33

Alarm Memory Display 13

Alarm Testing 27

Ambulance 32

Area Access, in User Options 19

Area Display 8

Arm 32, 33

Arming  
 Automatic Arming 11  
 Force Arming 10  
 Instant Arming 9  
 Keyswitch Arming 11  
 Regular Arming 9  
 Stay Arming 9  
 with Card 21

Auto-Arming  
 No Movement Auto-Arming 12  
 Timed Auto-Arming 11

**B**

Battery  
 Disconnected 23  
 Low, in a Zone 23

Beep Tones

Confirmation beep 6  
 in Opened or Closed Zones, see  
 Chime Zones  
 Rejection beep 6

Bell Disconnected 23

Brightness 35

Burglar Alarms 31

Buttons  
 One-Touch 11  
 Quick Function 26

Bypass 32  
 Bypass Recall 10  
 Programming 10

Bypass zone 33

**C**

Card, Access Control  
 Arming with 21  
 Disarming with 21

Characters, Special 17

Chime Zones 26

Chiming 33

Clean screen 35

Clock 34

Clock, Set Time and Date 25

Code Follows Schedule 20

Configuration permissions 35

Copy User Options 14

**D**

Date, Set Keypad 25

Date, Set Touchpad 35

Deactivating a Security System 12

Delay Timer  
 Entry 13  
 Exit 9

Delayed Fire Zone 30

Deleting User Access Codes 17

Disarm 32, 33

Disarming  
 Armed System 13  
 with Card 21

Display  
 Alarms In Memory 13  
 User Actions in Memory 24

Display settings 35

Duress, in User Options 19

**E**

Emergency Buttons 26

Entering and Exiting, Access Con-  
 trol Doors 21

Entry Delay Timer 13

Erasing User Access Codes 17

Event log 33

Event Record Display 24

Events 32

Exit Delay Timer 9

Extended Unlocked Period 20

**F**

Fire 32  
 Delayed Fire Zone 30  
 Minimizing Home Fire Hazards  
 31  
 Safety Tips 30  
 Standard Fire Zone 30  
 Warning System 31

Fire Alarm, Testing 27

Force Arming 10

**H**

Home page 34

Home Screen 34

**I**

Ignoring Zones when Arming, see  
 Bypass Programming

instant arm 33

Instant Arming 9

**K**

Keypad, LCD  
 Buttons 6  
 Letter Assignment 15  
 Lights 6  
 Messages 6  
 Settings 25

Keyswitch Arming 11

**L**

Language select language 34

Log 32

Log for events 33

**M**

Master Code 14

Master Feature, in User Options 19

Memory alarm 33

Memory of alarms 32

Monitoring 33

Mute 35

- N**  
 No Movement Auto-Arming 12
- O**  
 One Screen Monitoring 33  
 One Touch Button for the DGP-641BL/RB and the DGP-648 11  
 One-Touch buttons 11  
 Outputs, Programmable (PGM) 25
- P**  
 Panel brightness 35  
 Panic Alarms 26  
 Panic button 32  
 Permissions to configure touchpad 35  
 Pictures 32  
 Police 32  
 Power Failure, see Trouble  
 Programmable Outputs (PGM) 25  
 Programming  
   Chime Zones 26  
   User Access Codes 17–19
- R**  
 Recall, Bypassed Zones 10  
 Regular Arming 9  
 Request for Exit 21
- S**  
 Safety Tips, Fire 30  
 Schedule  
   Code Follows 20  
 Schedule Tolerance Window, see Add Tolerance to User Schedule  
 Set date 34  
 Set Time 34  
 Set Time and Date 34, 35  
 Siren Disconnected 23  
 Slide Show 32, 34  
 Slides 32  
 Smoke detector 33  
 Smoke detector reset 33  
 Special Characters 17  
 Special Characters, Greek 38  
 Special Characters, Hebrew 36  
 Special Characters, Russian 37  
 Special Function Keys 16  
 Standard Fire Zone 30  
 Status, View 33  
 Stay Arm 33  
 Stay Arming 9  
 System Master Code 14  
 System Test 27
- T**  
 Tampered Zones 23  
 Temperature sensing 34  
 Testing and Maintenance  
   Burglar Alarm 27  
   Fire Alarm 27  
   System Maintenance 27  
   System Test 27  
 Time, Set 25  
 Time, set 35  
 Timed Auto-Arming 11  
 Timer  
   Entry Delay 13  
   Exit Delay 9  
 Touchpad Add-ons 33  
 Touchpad Advanced Functions 35  
 touchpad brightness 35  
 Touchpad Control Devices 33  
 Touchpad main screen 32  
 Touchpad Personalize 34  
 Touchpad Reset Smoke Detector 33  
 Touchpad rest smoke detector 33  
 Touchpad Security functions 33  
 Touchpad System Security 35  
 Touchpad User Codes 34  
 Trouble  
   AC Failure 23  
   Battery 23  
   Bell/Siren Disconnected 23  
   Clock 23  
   Communicator 23  
   Fail to Communicate 23  
   Fail to Communicate PC 23  
   Low Battery, Zone 23  
   System 23  
   TLM1 23  
   Zone Fault 23  
   Zone Tampering 23  
 Troubles 32, 33
- U**  
 Unlocked Period, Extended 20  
 User Labels 15  
 User Options  
   Access Control, see Access Control User Options  
   Area Access 19  
   Arm Only 19  
   Bypass 19  
   Copy 14  
   Duell 19  
   Force Arm 19  
   Master Feature 19  
   Programming 19  
   Stay & Instant Arm 19  
 User Settings 18
- V**  
 VDMP3 Plug-In Voice Dialer 26, 27  
 View memory 33  
 View Status 33  
 View troubles 33  
 Viewing  
   Alarms In Memory 13  
   User Actions in Memory 24  
 Volume 35
- Z**  
 Zone Chiming 33  
 Zone Labels 34  
 Zones 32



The whole Paradox team wishes you a successful and easy installation. We hope this product performs to your complete satisfaction.

Should you have any questions or comments, please contact us at [support@paradox.com](mailto:support@paradox.com).

Additional information can be found on our website [www.paradox.com/support](http://www.paradox.com/support)

PARADOX

Printed in Canada - 11/2022 PARADOX.COM

EVOHD+-EU00