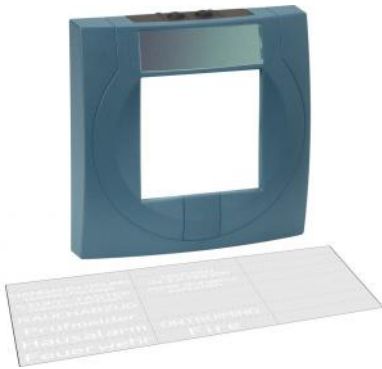



## MCP housing large with glass pane, blue, similar to RAL 5015




**Part-No.: 704901**

### Common technical data

Type of protection	IP 44
Housing	ASA plastic
Installation	surface mount
Weight	approx. 83 g (w/o electronic module)
Dimensions	W: 133 mm H: 133 mm D: 36 mm

 The Part No. 804902 electronic module in a blue housing complies with the EN 12094-3 and thus can be applied as an electronic stop button for gas extinguishing systems in dry, non-hazardous production sites. For different use such as application as "HOUSE ALARM" push button, ready-made labels are provided. Take note, for a LARGE MCP you have to order the electronic module and the MCP housing separately to have a complete MCP.

 Labeling foil set (white) for various international applications.

### Features:

- Slimline design
- Low power consumption
- Plug-in connection clamps
- Optional terminal clamps
- 2 x cable entries on top, at the bottom and on the rear panel
- Fixing on standard flush mounted installation box
- Test function via manual call point service key
- Detectors that are not ready for operation can be marked with the "Out of order" label by reversing the enclosed operating front foil

### Accessories:

704910	Spare glass for manual call points
769910	Plastic spare key
769911	Metal key for large MCP
769916	Service key
704917	Option IP 55 shrink sleeve for large MCP 80490x
704911	Universal foil for large MCP housing ABS